

NH Fuse Links

500 Volts • 2 – 630 Amperes



Littelfuse European style NH fuse links are designed for the protection of conductors and motors. The gL-gG characteristic fuse links are generally used to protect cables and installation lines from overloads and short-circuits. The aM characteristic fuse links are used for the short-circuit protection of motors and switchgear. They are available in NH00C to NH3 sizes up to 630 amperes.

Specifications

Standards: DIN 43.620, IEC 269-2-1
Approvals: VDE
Example part number: NH1CG25 (size, characteristic and amperage)

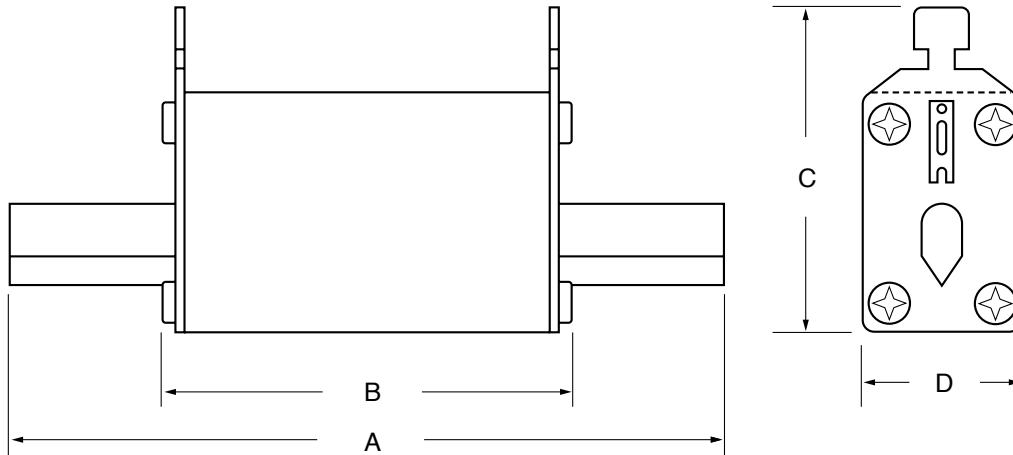
Size	Current Range	Voltage (AC/DC)	Interrupting Rating	Nominal Frequency	Selectivity
00C	2A up to 100A	500V/440V	120kA/25kA	45 - 62 Hz	1:1 25
00	2A up to 160A	500V/440V	120kA/25kA	45 - 62 Hz	1:1 25
0	6A up to 160A	500V/440V	120kA/25kA	45 - 62 Hz	1:1 25
1C	25A up to 160A	500V/440V	120kA/25kA	45 - 62 Hz	1:1 25
1	63A up to 250A	500V/440V	120kA/25kA	45 - 62 Hz	1:1 25
2C	40A up to 250A	500V/440V	120kA/25kA	45 - 62 Hz	1:1 25
2	125A up to 400A	500V/440V	120kA/25kA	45 - 62 Hz	1:1 25
3C	315A up to 400A	500V/440V	120kA/25kA	45 - 62 Hz	1:1 25
3	315A up to 630A	500V/440V	120kA/25kA	45 - 62 Hz	1:1 25

All NH fuse links incorporate a blown fuse indicator.

Amperage	gL-gG 500V					aM 500V			
	NH00C/NH00	NH0	NH1C/NH1	NH2C/NH2	NH3C/NH3	NH00M	NH1	NH2	NH3
2	NH00CG2	—	—	—	—	NH00M2	—	—	—
4	NH00CG4	—	—	—	—	NH00M4	—	—	—
6	NH00CG6	NH0G6	—	—	—	NH00M6	—	—	—
10	NH00CG10	NH0G10	—	—	—	NH00M10	—	—	—
16	NH00CG16	NH0G16	—	—	—	NH00M16	—	—	—
20	NH00CG20	NH0G20	—	—	—	NH00M20	—	—	—
25	NH00CG25	NH0G25	NH1CG25	—	—	NH00M25	—	—	—
32	NH00CG32	NH0G32	NH1CG32	—	—	NH00M32	—	—	—
35	NH00CG35	NH0G35	NH1CG35	—	—	NH00M35	—	—	—
40	NH00CG40	NH0G40	NH1CG40	NH2CG40	—	NH00M40	—	—	—
50	NH00CG50	NH0G50	NH1CG50	NH2CG50	—	NH00M50	—	—	—
63	NH00CG63	NH0G63	NH1CG63	NH2CG63	—	NH00M63	NH1M63	—	—
80	NH00CG80	NH0G80	NH1CG80	NH2CG80	—	NH00M80	NH1M80	—	—
100	NH00CG100	NH0G100	NH1CG100	NH2CG100	—	NH00M100	NH1M100	—	—
125	NH00G125	NH0G125	NH1CG125	NH2CG125	—	NH00M125	NH1M125	NH2M125	—
160	NH00G160	NH0G160	NH1CG160	NH2CG160	—	NH00M160	NH1M160	NH2M160	—
200	—	—	NH1G200	NH2CG200	—	—	NH1M200	NH2M200	—
224	—	—	NH1G224	NH2CG224	—	—	NH1M224	NH2M224	—
250	—	—	NH1G250	NH2CG250	—	—	NH1M250	NH2M250	—
300	—	—	—	NH2G300	—	—	—	NH2M300	—
315	—	—	—	NH2G315	NH3CG315	—	—	NH2M315	NH3M315
355	—	—	—	NH2G355	NH3CG355	—	—	NH2M355	NH3M355
400	—	—	—	NH2G400	NH3CG400	—	—	NH2M400	NH3M400
425	—	—	—	—	NH3G425	—	—	—	—
500	—	—	—	—	NH3G500	—	—	—	NH3M500
630	—	—	—	—	NH3G630	—	—	—	NH3M630

NH Fuse Links

NH Fuse Link Dimensions



Size	Current Range	Dimensions (mm)			
		A	B	C	D
00C	2-100A	78.00	54.00	51.30	20.00
00	2-160A	78.00	54.00	56.40	30.00
0	6-160A	123.95	70.11	53.34	30.00
1C	25-160A	135.00	75.00	56.40	30.00
1	63-250A	135.00	75.00	64.30	40.00
2C	40-250A	150.00	75.00	64.26	40.00
2	125-400A	150.00	75.00	74.20	50.00
3C	315-400A	150.00	75.00	74.20	50.00
3	315-630A	150.00	75.00	87.37	71.88

NH Bases / Disconnects

Fuse Bases

Part No.	Size	Rating	Connection
NHB00B	00	690V/160A	Bolt
NHB00C	00	690V/160A	V-Clamp
NHB1B	1	690V/250A	Bolt
NHB2B	2	690V/400A	Bolt
NHB3B	3	690V/630A	Bolt

All fuse bases are single pole and gangable.

Fuse Disconnects

Part No.	Size	Rating	Connection
NHFS00B	C00	690V/100A	Bolt
NHFS0B	0	690V/160A	Bolt
NHFS1B	1	690V/250A	Bolt
NHFS2B	2	690V/400A	Bolt
NHFS3B	3	690V/630A	Bolt

All disconnects are 3 pole.

Contact factory for dimensional information.

