




Features

- High power ratings
- Compliant with AEC-Q200 Rev-C- Stress Test Qualification for Passive Components in Automotive Applications
- Low profile
- Compatible with Pb and Pb-free solder reflow profiles
- RoHS compliant* and halogen free**
- Surface mount packaging for automated assembly
- Agency recognition: 
- Standard 7555 mm (2920 mils) footprint

MF-LSMF Series - PTC Resettable Fuses

Electrical Characteristics

Model***	V max. Volts	I max. Amps	I _{hold}		I _{trip}		Resistance		Max. Time To Trip		Tripped Power Dissipation
			Amperes at 23 °C		Ohms at 23 °C		Amperes at 23 °C	Seconds at 23 °C	Watts at 23 °C		
			Hold	Trip	R _{Min.}	R _{1Max.}				Typ.	
MF-LSMF185/33X	33.0	40	1.85	3.70	0.045	0.150	8.0	2.50	1.5		
MF-LSMF260X	24.0	20	2.60	5.20	0.020	0.075	8.0	5.00	1.5		
MF-LSMF300X	6.0	40	3.00	5.00	0.015	0.048	8.0	20.00	1.5		
MF-LSMF300/24X	24.0	20	3.00	5.20	0.020	0.075	8.0	5.00	1.5		
MF-LSMF400/12X****	12.0	20	4.00	8.00	0.005	0.050	8.0	15.00	1.5		

*** Features Multifuse® Free Xpansion Design™ for MF-LSMF Series.

**** UL approval pending.

Environmental Characteristics

Operating Temperature.....	-40 °C to +85 °C	
Passive Aging.....	+85 °C, 1000 hours.....	±5 % typical resistance change
Humidity Aging.....	+85 °C, 85 % R.H. 1000 hours.....	±5 % typical resistance change
Thermal Shock.....	+85 °C to -40 °C, 20 times.....	±10 % typical resistance change
Solvent Resistance.....	MIL-STD-202, Method 215.....	No change
Vibration.....	MIL-STD-883C, Method 2007.1, Condition A.....	No change
Moisture Sensitivity Level (MSL).....	Level 1	
ESD Classification - HBM.....	Class 6	

Test Procedures And Requirements For Model MF-LSMF Series

Test	Test Conditions	Accept/Reject Criteria
Visual/Mech.....	Verify dimensions and materials.....	Per MF physical description
Resistance.....	In still air @ 23 °C.....	$R_{min} \leq R \leq R_{1max}$
Time to Trip.....	At specified current, V _{max} , 23 °C.....	$T \leq \text{max. time to trip (seconds)}$
Hold Current.....	30 min. at I _{hold}	No trip
Trip Cycle Life.....	V _{max} , I _{max} , 100 cycles.....	No arcing or burning
Trip Endurance.....	V _{max} , 48 hours.....	No arcing or burning
Solderability.....	ANSI/J-STD-002.....	95 % min. coverage
UL File Number.....	E174545 http://www.ul.com/ Follow link to Online Certificates Directory, then enter UL File No. E174545, or click here	
TÜV Certificate Number.....	R 50256634 http://www.tuvdotcom.com/ Follow link to "other certificates", enter File No. 50256634 or click here	

*RoHS Directive 2002/95/EC Jan. 27, 2003 including annex and RoHS Recast 2011/65/EU June 8, 2011.

**Bourns considers a product to be "halogen free" if (a) the Bromine (Br) content is 900 ppm or less; (b) the Chlorine (Cl) content is 900 ppm or less; and (c) the total Bromine (Br) and Chlorine (Cl) content is 1500 ppm or less. Specifications are subject to change without notice.

The device characteristics and parameters in this data sheet can and do vary in different applications and actual device performance may vary over time. Users should verify actual device performance in their specific applications.

Applications

- Automotive electronics
- Industrial controls
- IEEE ports
- Portable electronics

MF-LSMF Series - PTC Resettable Fuses

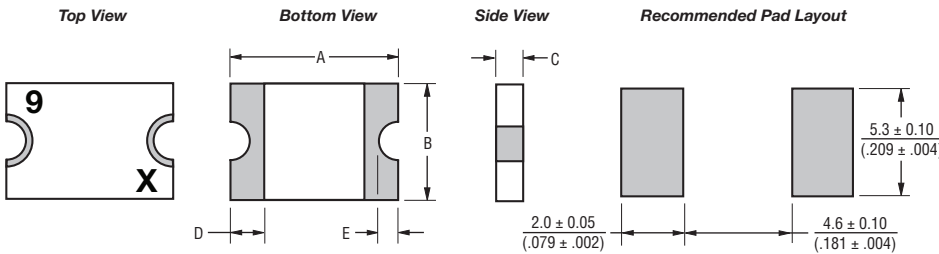
BOURNS®

Product Dimensions

Model	A		B		C		D		E	
	Min.	Max.	Min.	Max.	Min.	Max.	Min.	Min.	Max.	
MF-LSMF185/33X	$\frac{6.73}{(0.265)}$	$\frac{7.98}{(0.312)}$	$\frac{4.80}{(0.189)}$	$\frac{5.44}{(0.214)}$	$\frac{0.75}{(0.030)}$	$\frac{1.60}{(0.063)}$	$\frac{0.30}{(0.012)}$	$\frac{0.25}{(0.010)}$	$\frac{2.00}{(0.079)}$	
MF-LSMF260X	$\frac{6.73}{(0.265)}$	$\frac{7.98}{(0.312)}$	$\frac{4.80}{(0.189)}$	$\frac{5.44}{(0.214)}$	$\frac{0.75}{(0.030)}$	$\frac{1.60}{(0.063)}$	$\frac{0.30}{(0.012)}$	$\frac{0.25}{(0.010)}$	$\frac{2.00}{(0.079)}$	
MF-LSMF300X	$\frac{6.73}{(0.265)}$	$\frac{7.98}{(0.312)}$	$\frac{4.80}{(0.189)}$	$\frac{5.44}{(0.214)}$	$\frac{0.35}{(0.014)}$	$\frac{0.85}{(0.033)}$	$\frac{0.30}{(0.012)}$	$\frac{0.25}{(0.010)}$	$\frac{2.00}{(0.079)}$	
MF-LSMF300/24X	$\frac{6.73}{(0.265)}$	$\frac{7.98}{(0.312)}$	$\frac{4.80}{(0.189)}$	$\frac{5.44}{(0.214)}$	$\frac{0.75}{(0.030)}$	$\frac{1.60}{(0.063)}$	$\frac{0.30}{(0.012)}$	$\frac{0.25}{(0.010)}$	$\frac{2.00}{(0.079)}$	
MF-LSMF400/12X	$\frac{6.73}{(0.265)}$	$\frac{7.98}{(0.312)}$	$\frac{4.80}{(0.189)}$	$\frac{5.44}{(0.214)}$	$\frac{0.65}{(0.026)}$	$\frac{1.60}{(0.063)}$	$\frac{0.30}{(0.012)}$	$\frac{0.25}{(0.010)}$	$\frac{2.00}{(0.079)}$	

Packaging: 3000 pcs. per reel.

DIMENSIONS: $\frac{\text{MM}}{\text{(INCHES)}}$



Terminal material:

Electroless Ni under immersion Au

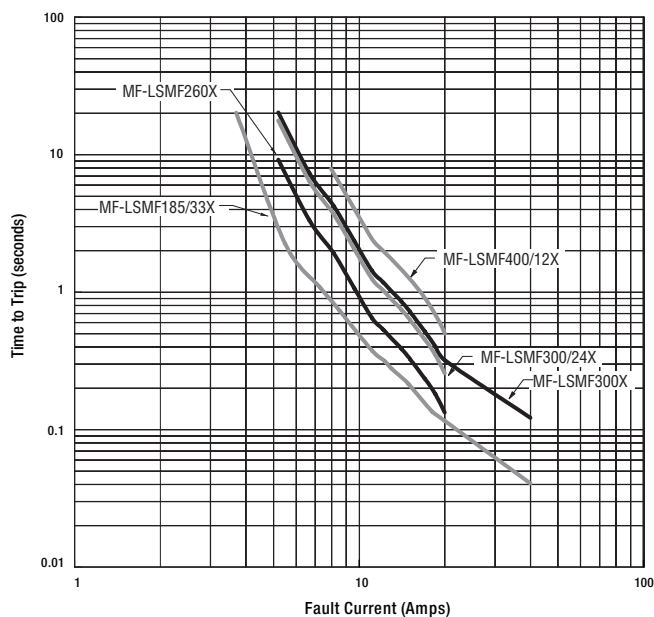
Termination pad solderability:

Standard Au finish:
Meets ANSI/J-STD-002 Category 2.

Recommended Storage:

40 °C max./70 % RH max.

Typical Time to Trip at 23 °C



The Time to Trip curves represent typical performance of a device in a simulated application environment. Actual performance in specific customer applications may differ from these values due to the influence of other variables.

Specifications are subject to change without notice.

The device characteristics and parameters in this data sheet can and do vary in different applications and actual device performance may vary over time. Users should verify actual device performance in their specific applications.

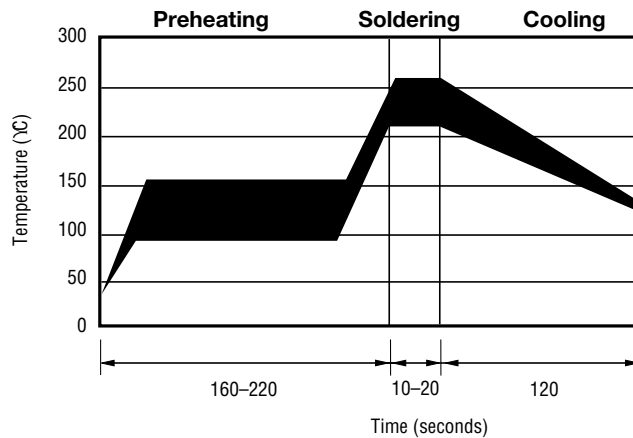
MF-LSMF Series - PTC Resettable Fuses

BOURNS®

Thermal Derating Chart - I_{hold} (Amps)

Model	Ambient Operating Temperature								
	-40 °C	-20 °C	0 °C	23 °C	40 °C	50 °C	60 °C	70 °C	85 °C
MF-LSMF185/33X	2.80	2.47	2.17	1.85	1.54	1.39	1.22	1.07	0.85
MF-LSMF260X	3.75	3.35	3.00	2.60	2.35	2.15	2.05	1.80	1.30
MF-LSMF300X	4.53	4.02	3.51	3.00	2.52	2.26	1.99	1.75	1.34
MF-LSMF300/24X	4.00	3.55	3.20	3.00	2.50	2.25	2.15	1.85	1.50
MF-LSMF400/12X	5.30	4.70	4.25	4.00	3.30	3.00	2.85	2.45	2.00

Solder Reflow Recommendations



Notes:

- MF-LSMF models cannot be wave soldered. Please contact Bourns for hand soldering recommendations.
- If reflow temperatures exceed the recommended profile, devices may not meet the performance requirements.
- Compatible with Pb and Pb-free solder reflow profiles.

How to Order

MF - LSMF 185/33X - 2

Multifuse® Product Designator _____

Series _____
 LSMF = 7555 mm (2920 mils)
 Surface Mount Component

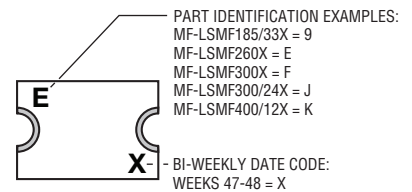
Hold Current, I_{hold} _____
 185-400 (1.85 Amps - 4.00 Amps)

Higher Voltage Option _____
 /12 = 12 Volt Rated
 /24 = 24 Volt Rated
 /33 = 33 Volt Rated
 X = Multifuse® freeXpansion™ Design
 MF-LSMF Series

Packaging _____
 Packaged per EIA 481-1
 -2 = Tape and Reel

Typical Part Marking

Represents total content. Layout may vary.



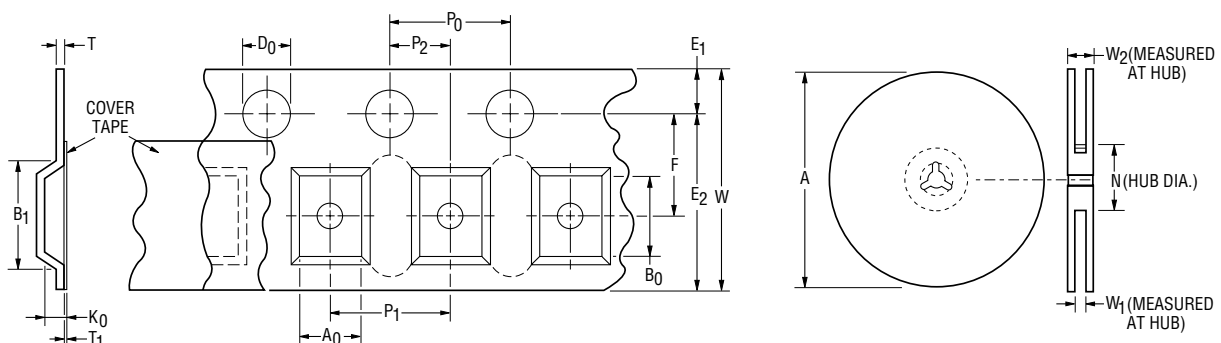
MF-LSMF Series Tape and Reel Specifications

BOURNS®

NOTE: Effective December 1, 2010 (product date code "X"), the cover tape was changed to the new 3M™ Universal Cover Tape (UCT).

Tape Dimensions	MF-LSMF300X per EIA 481-2	MF-LSMF185/33X, MF-LSMF260X, MF-LSMF300/24X, MF-LSMF400/12X per EIA 481-2
W	16.0 ± 0.30 (0.630 ± 0.012)	16.0 ± 0.30 (0.630 ± 0.012)
P ₀	4.0 ± 0.10 (0.157 ± 0.004)	4.0 ± 0.10 (0.157 ± 0.004)
P ₁	8.0 ± 0.10 (0.315 ± 0.004)	8.0 ± 0.10 (0.315 ± 0.004)
P ₂	2.0 ± 0.05 (0.079 ± 0.002)	2.0 ± 0.05 (0.079 ± 0.002)
A ₀	5.74 ± 0.10 (0.226 ± 0.004)	5.70 ± 0.10 (0.224 ± 0.004)
B ₀	8.02 ± 0.10 (0.316 ± 0.004)	8.10 ± 0.10 (0.319 ± 0.004)
B ₁ max.	12.1 (0.476)	12.1 (0.476)
D ₀	$1.5 + 0.10/-0.0$ (0.059 + 0.004/-0)	$1.5 + 0.10/-0.0$ (0.059 + 0.004/-0)
F	7.5 ± 0.05 (0.295 ± 0.002)	7.5 ± 0.05 (0.295 ± 0.002)
E ₁	1.75 ± 0.10 (0.069 ± 0.004)	1.75 ± 0.10 (0.069 ± 0.004)
E ₂ min.	14.25 (0.561)	14.25 (0.561)
T max.	0.6 (0.024)	0.6 (0.024)
T ₁ max.	0.1 (0.004)	0.1 (0.004)
K ₀	0.91 ± 0.10 (0.036 ± 0.004)	1.70 ± 0.10 (0.067 ± 0.004)
Leader min.	390 (15.35)	390 (15.35)
Trailer min.	160 (6.30)	160 (6.30)
Reel Dimensions		
A max.	331 (13.03)	331 (13.03)
N min.	50 (1.97)	50 (1.97)
W ₁	$16.4 + 2.0/-0.0$ (0.646 + 0.079/-0.0)	$16.4 + 2.0/-0.0$ (0.646 + 0.079/-0.0)
W ₂ max.	22.4 (0.882)	22.4 (0.882)

DIMENSIONS: $\frac{\text{MM}}{\text{(INCHES)}}$



Specifications are subject to change without notice.
The device characteristics and parameters in this data sheet can and do vary in different applications and actual device performance may vary over time.
Users should verify actual device performance in their specific applications.