

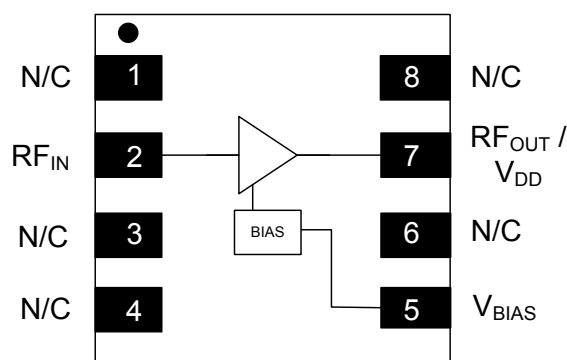
## Low Noise Amplifier 700 MHz - 6 GHz

Rev. V3

### Features

- Low Noise Figure:
  - 0.35 dB @ 1.9 GHz
  - 0.50 dB @ 2.6 GHz
- High Gain:
  - 22 dB @ 2.6 GHz
  - 15 dB @ 6.0 GHz
- High Linearity: 33 dBm OIP3
- Single Voltage Bias: 3 - 5 V
- Integrated Active Bias Circuit
- Current Adjustable 30 - 80 mA
- Lead-Free 2 mm 8-LD PDFN Package
- Halogen-Free "Green" Mold Compound
- RoHS\* Compliant and 260°C Reflow Compatible

### Functional Block Diagram



### Description

The MAAL-011078 is a high dynamic range, single stage MMIC LNA with ultra low noise figure, high gain and excellent linearity. This amplifier is designed for operation from 700 MHz to 6 GHz and is housed in a lead-free 2 mm 8-lead PDFN plastic package.

This low noise amplifier has an integrated active bias circuit allowing direct connection to 3 V or 5 V bias and minimizing variations over temperature and process. The bias current is set by an external resistor, so the user can customize the power consumption to fit the application.  $V_{BIAS}$  can be utilized as an enable pin to power the device up and down during operation.

In the 50  $\Omega$  environment and at 3 V, the MAAL-011078 offers 0.5 dB noise figure at 2.6 GHz, with 22 dB of gain and over 33 dBm output third order intercept point (OIP3). It is ideal for 4G cellular infrastructure and Wi-Fi applications.

### Pin Configuration<sup>3</sup>

| Pin No. | Pin Name                            | Description               |
|---------|-------------------------------------|---------------------------|
| 1       | N/C                                 | No Connection             |
| 2       | RF <sub>IN</sub>                    | RF Input                  |
| 3       | N/C                                 | No Connection             |
| 4       | N/C                                 | No Connection             |
| 5       | V <sub>BIAS</sub>                   | Bias Voltage              |
| 6       | N/C                                 | No Connection             |
| 7       | RF <sub>OUT</sub> / V <sub>DD</sub> | RF Output / Drain Voltage |
| 8       | N/C                                 | No Connection             |
| 9       | Pad <sup>4</sup>                    | Ground                    |

3. MACOM recommends connecting unused package pins to ground.
4. The exposed pad centered on the package bottom must be connected to RF, DC and thermal ground.

### Ordering Information<sup>1,2</sup>

| Part Number        | Package                       |
|--------------------|-------------------------------|
| MAAL-011078-TR1000 | 1000 piece reel               |
| MAAL-011078-TR3000 | 3000 piece reel               |
| MAAL-011078-001SMB | Sample Board<br>2.3 - 2.7 GHz |

1. Reference Application Note M513 for reel size information.
2. All sample boards include 3 loose parts.

\*Restrictions on Hazardous Substances,  
European Union Directive 2011/65/EU.

**Electrical Specifications: Freq = 1.9 GHz, V<sub>DD</sub> = 3 V, +25°C, Z<sub>0</sub> = 50 Ω, V<sub>BIAS</sub> = 2.3 V<sup>5</sup>**

| Parameter                       | Test Conditions                                       | Units | Min. | Typ. | Max. |
|---------------------------------|---|-------|------|------|------|
| Noise Figure                    | -   | dB    | —    | 0.35 | 0.7  |
| Gain                            | -   | dB    | 21   | 23   | 25   |
| Input Return Loss <sup>6</sup>  | -   | dB    | —    | 5    | —    |
| Output Return Loss <sup>6</sup> | -   | dB    | —    | 5    | —    |
| Output IP3                      | P <sub>IN</sub> = -22 dBm, tones 11 MHz apart         | dBm   | —    | 33   | —    |
| Output P1dB                     | -   | dBm   | —    | 17.5 | —    |
| Total Current                   | I <sub>DQ</sub> = I <sub>DD</sub> + I <sub>BIAS</sub> | mA    | 39   | 50   | 68   |

5. Refer to biasing options on page 3.

6. Return Loss can be improved with external matching components. Refer to application section.

## Absolute Maximum Ratings<sup>7,8,9</sup>

| Parameter                          | Absolute Maximum |
|------------------------------------|------------------|
| RF Input Power CW                  | 19 dBm           |
| V <sub>DD</sub>                    | 6 V              |
| V <sub>BIAS</sub>                  | 5 V              |
| Storage Temperature                | -55°C to +150°C  |
| Operating Temperature              | -40°C to +85°C   |
| Junction Temperature <sup>10</sup> | +150°C           |

7. Exceeding any one or combination of these limits may cause permanent damage to this device.
8. MACOM does not recommend sustained operation near these survivability limits.
9. Operating at nominal conditions with T<sub>J</sub> ≤ 150°C will ensure MTTF > 1 × 10<sup>6</sup> hours.
10. Junction Temperature (T<sub>J</sub>) = T<sub>C</sub> + θ<sub>JC</sub> \* ((V \* I) - (P<sub>OUT</sub> - P<sub>IN</sub>))  
 Typical thermal resistance (θ<sub>JC</sub>) = 83°C/W
  - a) For T<sub>C</sub> = +25°C,  
T<sub>J</sub> = 33°C @ 3 V, 0.05 A, P<sub>OUT</sub> = 17.5 dBm, P<sub>IN</sub> = -4.5 dBm
  - b) For T<sub>C</sub> = +85°C,  
T<sub>J</sub> = 93°C @ 3 V, 0.05 A, P<sub>OUT</sub> = 17.5 dBm, P<sub>IN</sub> = -4.5 dBm

## Handling Procedures

Please observe the following precautions to avoid damage:

## Static Sensitivity

Gallium Arsenide Integrated Circuits are sensitive to electrostatic discharge (ESD) and can be damaged by static electricity. Proper ESD control techniques should be used when handling these devices.

## Biasing Options

The MAAL-011078 bias can be set in 2 different ways: using only  $V_{DD}$  or using separate  $V_{DD}$  and  $V_{BIAS}$  voltages. A separate  $V_{BIAS}$  voltage allows pin 5 ( $V_{BIAS}$ ) to be used as an enable pin to power the device up and down during operation.

For both bias methods select the value of  $R_{BIAS}$  to achieve the desired current based on the tables on page 4, and use DC blocks at pin 2 ( $RF_{IN}$ ) and pin 7 ( $RF_{OUT} / V_{DD}$ ).

### Biasing Option - $V_{DD}$ only

To use only  $V_{DD}$ , connect pin 7 ( $RF_{OUT} / V_{DD}$ ) to  $V_{DD}$  through an RF choke inductor and connect pin 5 ( $V_{BIAS}$ ) to  $V_{DD}$  through bias resistor  $R_{BIAS}$  as shown in Figure 1.

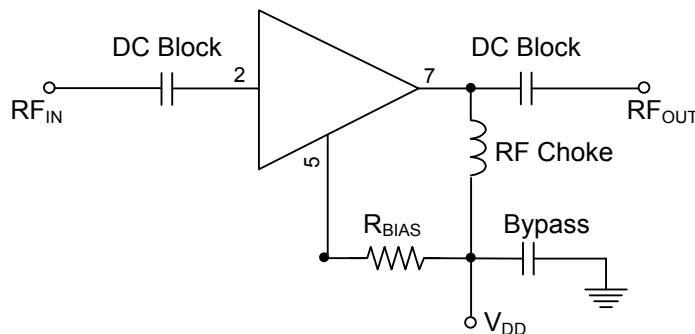


Figure 1

### Biasing Option - Separate $V_{DD}$ and $V_{BIAS}$ Voltages ( $V_{BIAS} \leq V_{DD}$ )

To use separate  $V_{DD}$  and  $V_{BIAS}$  voltages, connect pin 7 ( $RF_{OUT} / V_{DD}$ ) to  $V_{DD}$  through an RF choke inductor and connect pin 5 ( $V_{BIAS}$ ) to  $V_{BIAS}$  through bias resistor  $R_{BIAS}$  as shown in Figure 2. Typical current ( $I_{BIAS}$ ) draw for pin 5 ( $V_{BIAS}$ ) is 1.4 mA @  $V_{BIAS} = 3$  V and 1  $\mu$ A @  $V_{BIAS} = 0$  V. Typical current ( $I_{DD}$ ) draw for pin 7 ( $RF_{OUT} / V_{DD}$ ) is < 1  $\mu$ A @  $V_{BIAS} = 0$  V.

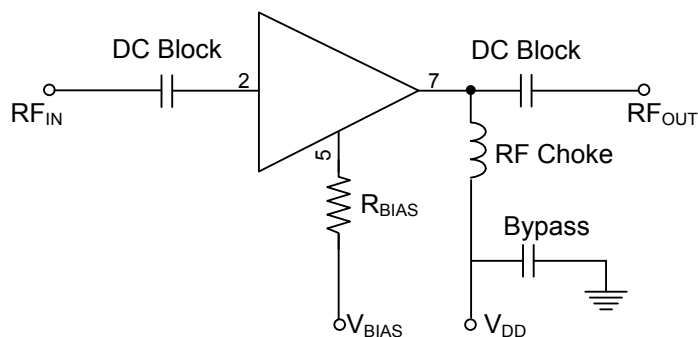
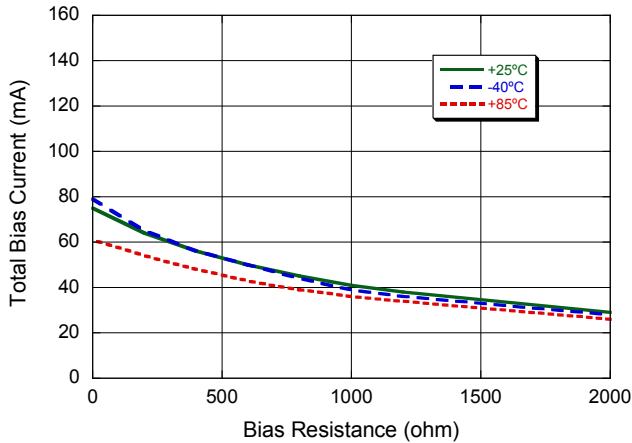


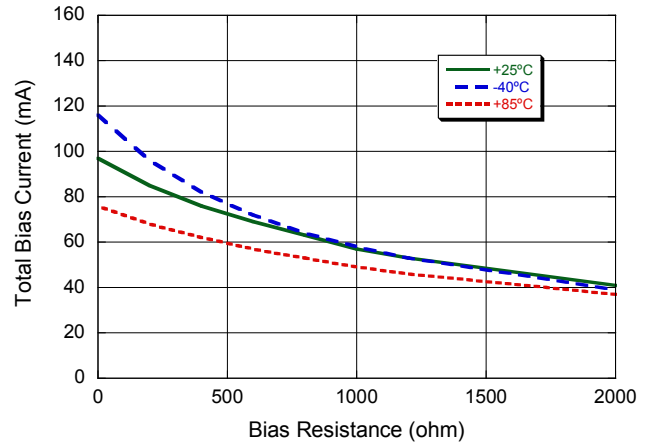
Figure 2

## Typical Performance Curves of the Active Bias Circuit

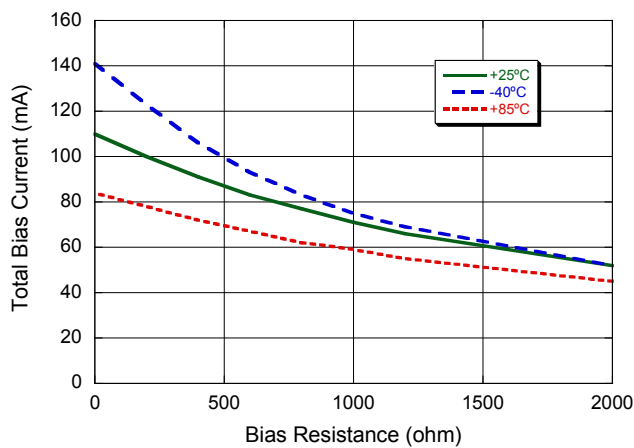
Current,  $V_{DD} = 3\text{ V}$



Current,  $V_{DD} = 4\text{ V}$



Current,  $V_{DD} = 5\text{ V}$

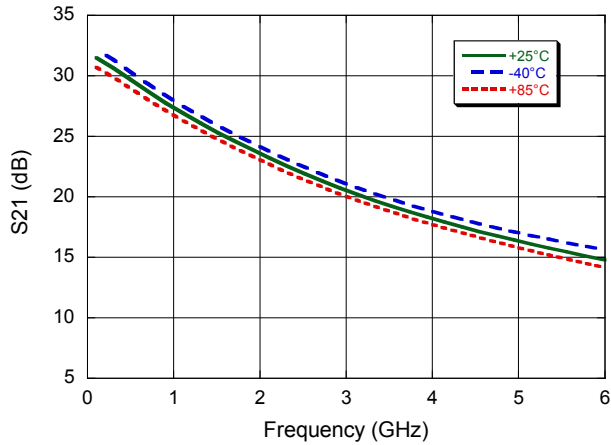


## Bias Table

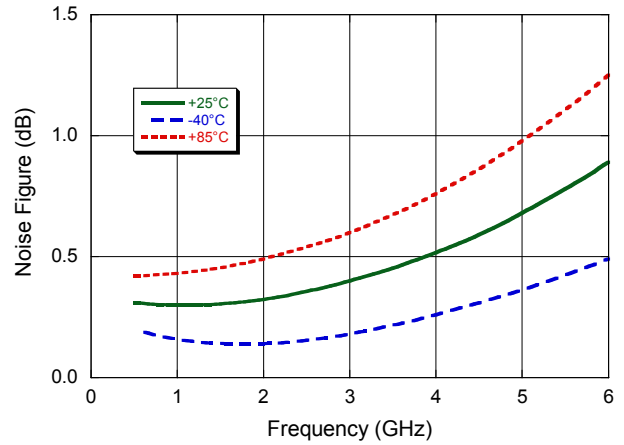
| Bias Resistance<br>( $\Omega$ ) | Total Current (mA)    |       |       |                       |       |       |                       |       |       |
|---------------------------------|-----------------------|-------|-------|-----------------------|-------|-------|-----------------------|-------|-------|
|                                 | $V_{DD} = 3\text{ V}$ |       |       | $V_{DD} = 4\text{ V}$ |       |       | $V_{DD} = 5\text{ V}$ |       |       |
|                                 | +25°C                 | -40°C | +85°C | +25°C                 | -40°C | +85°C | +25°C                 | -40°C | +85°C |
| 2000                            | 29                    | 28    | 26    | 41                    | 39    | 37    | 52                    | 52    | 45    |
| 1200                            | 38                    | 36    | 34    | 53                    | 53    | 46    | 66                    | 69    | 55    |
| 1000                            | 41                    | 39    | 36    | 57                    | 58    | 49    | 71                    | 75    | 59    |
| 800                             | 45                    | 44    | 39    | 63                    | 64    | 53    | 77                    | 83    | 62    |
| 600                             | 50                    | 50    | 43    | 69                    | 72    | 57    | 83                    | 93    | 67    |
| 400                             | 56                    | 56    | 48    | 76                    | 82    | 62    | 91                    | 106   | 72    |
| 200                             | 64                    | 65    | 54    | 85                    | 96    | 68    | 100                   | 123   | 78    |
| 0                               | 75                    | 79    | 61    | 97                    | 116   | 76    | 110                   | 141   | 84    |

**Typical Performance Curves @ 3 V / 50 mA,  $Z_0 = 50 \Omega$**

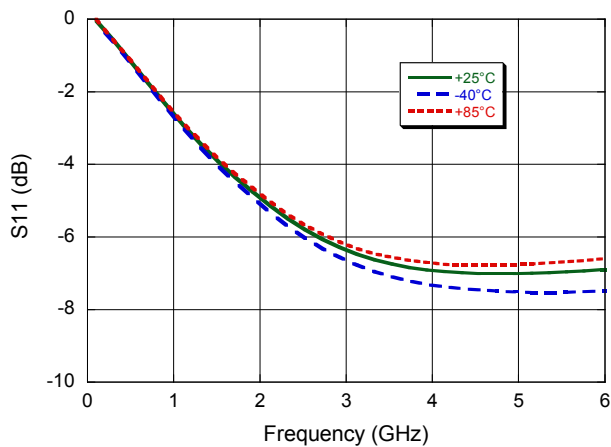
**Gain**



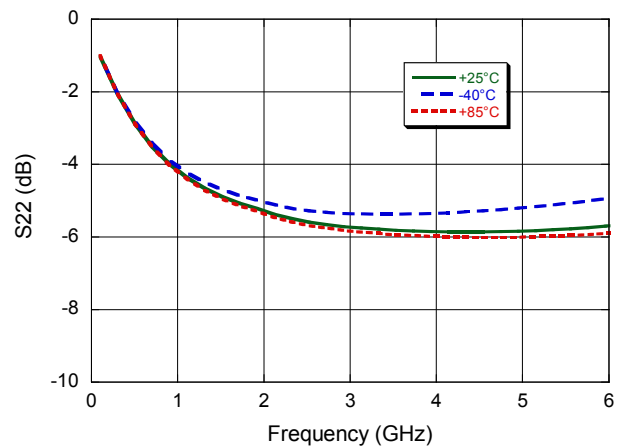
**Noise Figure**



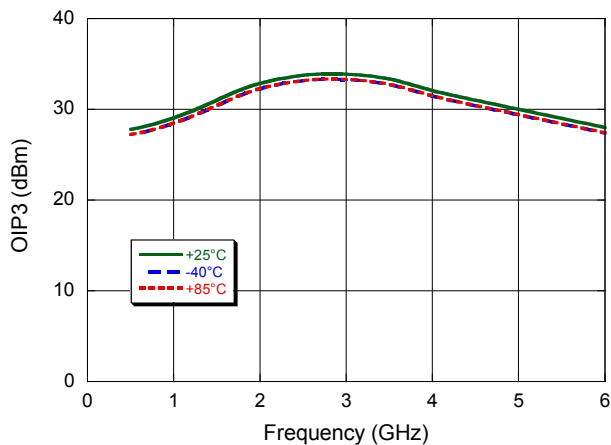
**Input Return Loss**



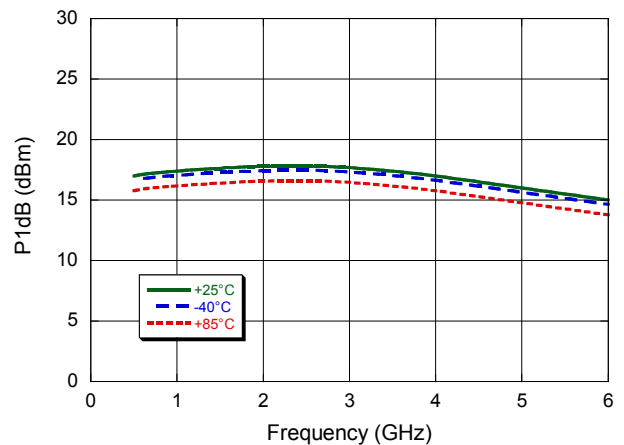
**Output Return Loss**



**OIP3**



**P1dB**

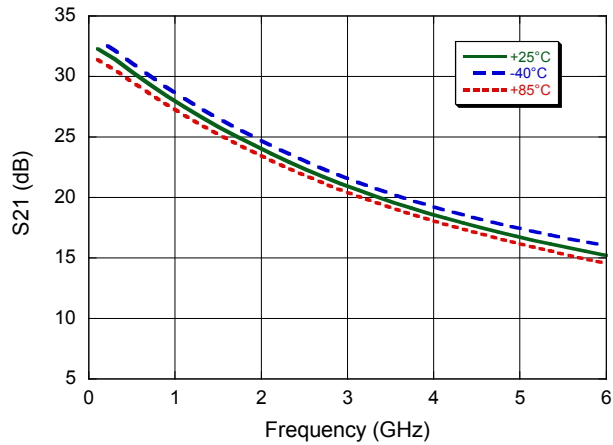


## Low Noise Amplifier 700 MHz - 6 GHz

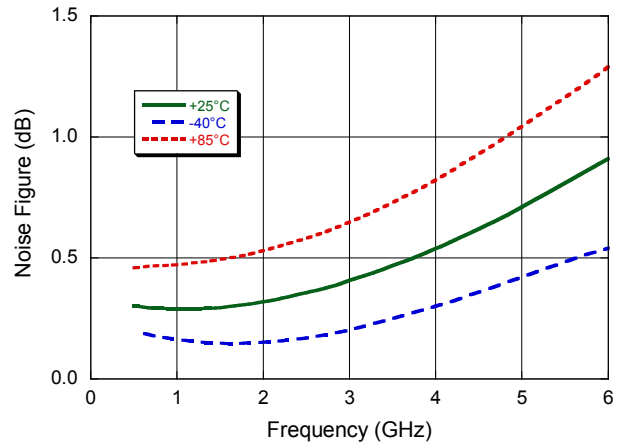
Rev. V3

### Typical Performance Curves @ 5 V / 70 mA, $Z_0 = 50 \Omega$

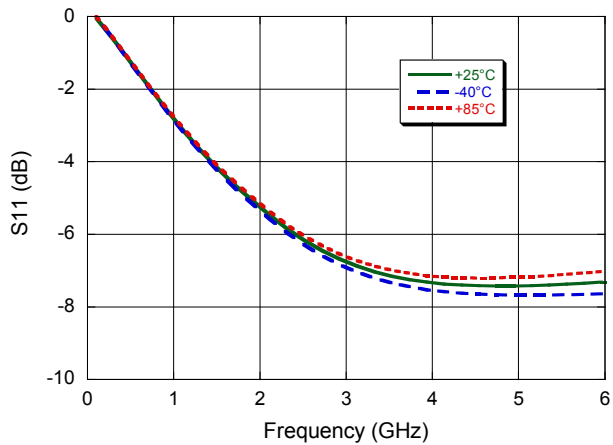
**Gain**



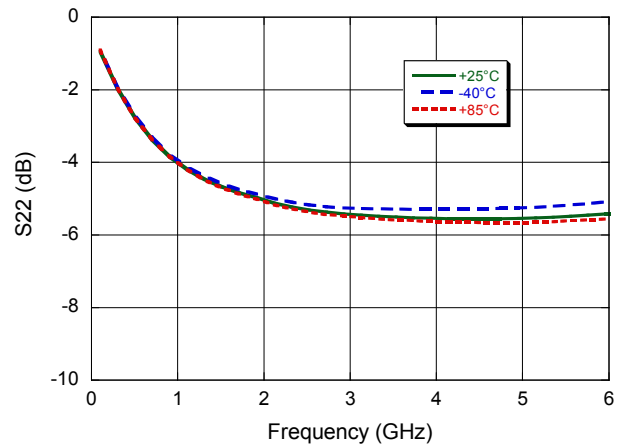
**Noise Figure**



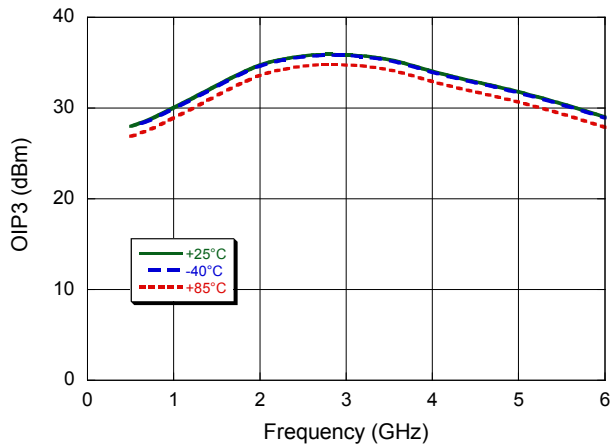
**Input Return Loss**



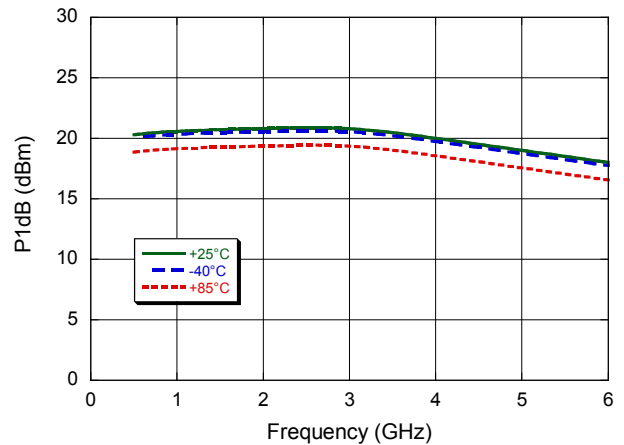
**Output Return Loss**



**OIP3**



**P1dB**

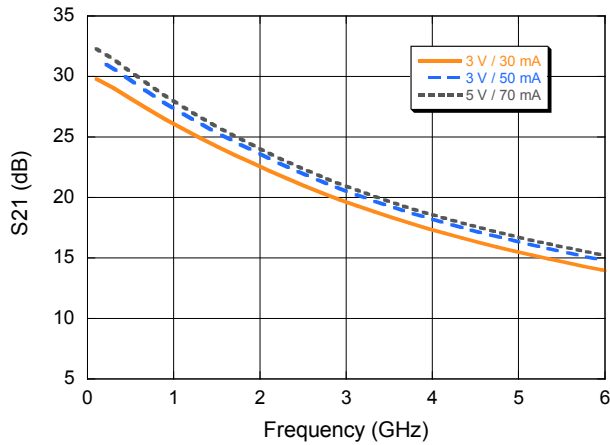


## Low Noise Amplifier 700 MHz - 6 GHz

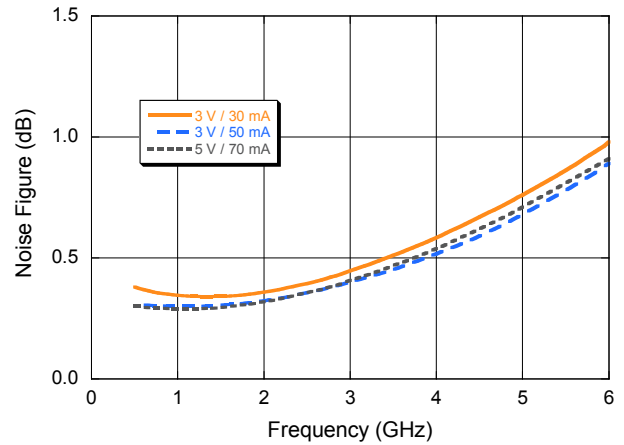
Rev. V3

### Typical Performance Curves @ 3 V / 30 mA, 3 V / 50 mA, 5V / 70 mA, $Z_0 = 50 \Omega$

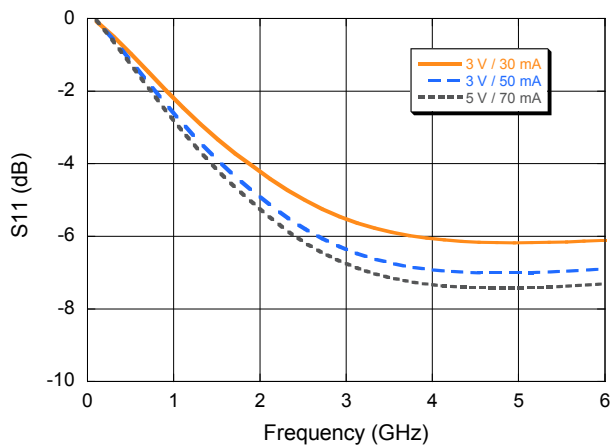
**Gain**



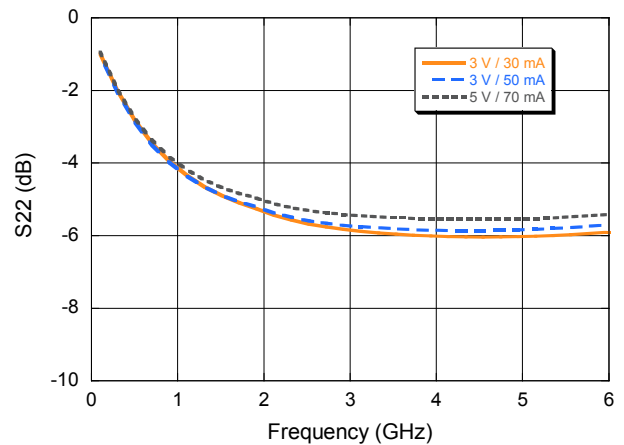
**Noise Figure**



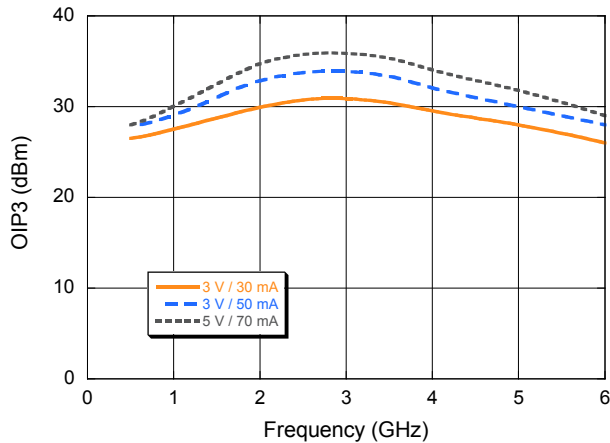
**Input Return Loss**



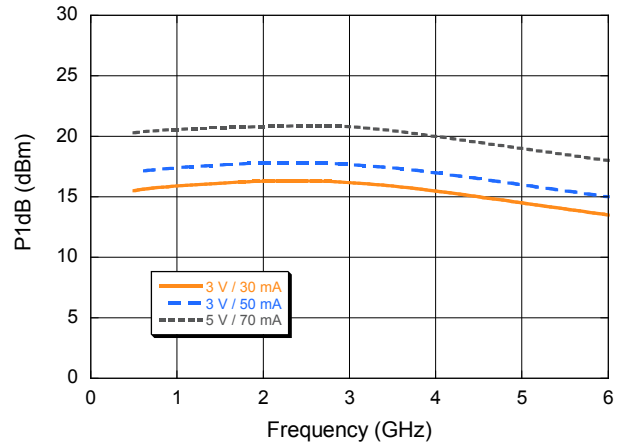
**Output Return Loss**



**OIP3**



**P1dB**







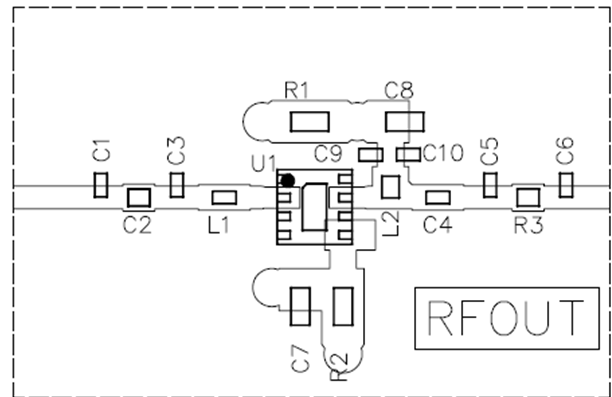
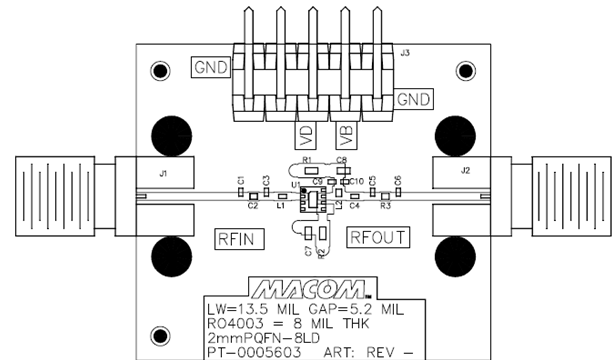
## 2.3 - 2.7 GHz Application Section

The MAAL-011078 is designed to work as a low noise gain block over a wide range of frequencies in a 50  $\Omega$  environment.

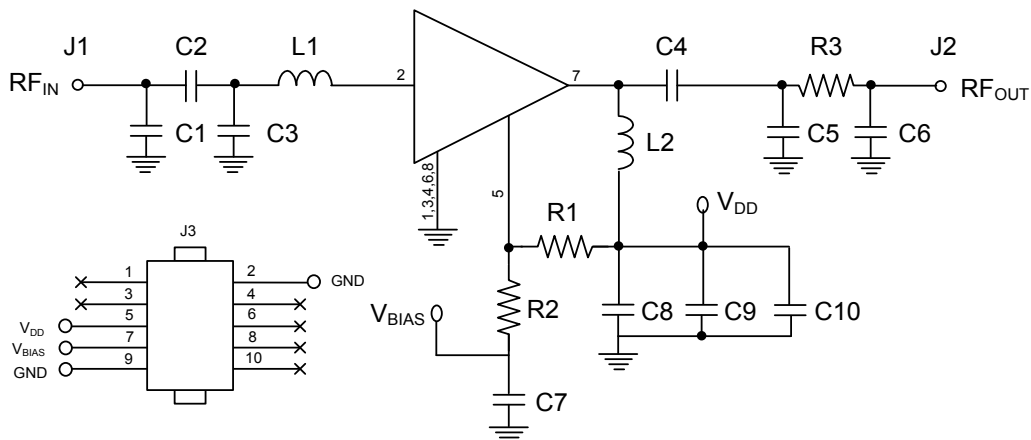
Input and output can be tuned to improve return loss over a specific frequency band.

The evaluation board shown has been designed for tuning flexibility. The parts list on page 10 details the components needed to tune the MAAL-011078 for operation from 2.3 – 2.7 GHz. R1 or R2 may be used as  $R_{BIAS}$  according to the biasing option chosen.

### Evaluation Board, 2.3 - 2.7 GHz



### Schematic, 2.3 - 2.7 GHz



## 2.3 - 2.7 GHz Application Section

### Parts List, 2.3 - 2.7 GHz

| Component | Value        | Size | Manufacturer | Manufacturer Part # |
|-----------|--------------|------|--------------|---------------------|
| C1        | —            | 0201 | —            | —                   |
| C2        | 10 pF        | 0201 | Murata       | GJM0336C1E100JB01   |
| C3        | 0.7 pF       | 0201 | Murata       | GJM0335C1ER70WB0    |
| C4        | 1.8 pF       | 0201 | Murata       | GJM0335C1E1R8BB01   |
| C5        | 0.4 pF       | 0201 | Murata       | GJM0335C1ER40WB01   |
| C6        | —            | 0201 | —            | —                   |
| C7        | —            | 0402 | —            | —                   |
| C8        | 0.1 $\mu$ F  | 0402 | —            | —                   |
| C9, C10   | 49 pF        | 0201 | —            | —                   |
| L1        | 2.5 nH       | 0201 | Coilcraft    | 0201DS-2N5XJL       |
| L2        | 2.7 nH       | 0201 | Murata       | LQP03TN2N7C02       |
| R1        | 470 $\Omega$ | 0402 | —            | —                   |
| R2        | —            | 0402 | —            | —                   |
| R3        | 0 $\Omega$   | 0201 | —            | —                   |

## Low Noise Amplifier 700 MHz - 6 GHz

Rev. V3

Electrical Specifications: Freq = 2.6 GHz<sup>11,12</sup>, V<sub>DD</sub> = 3 V, +25°C, Z<sub>0</sub> = 50 Ω

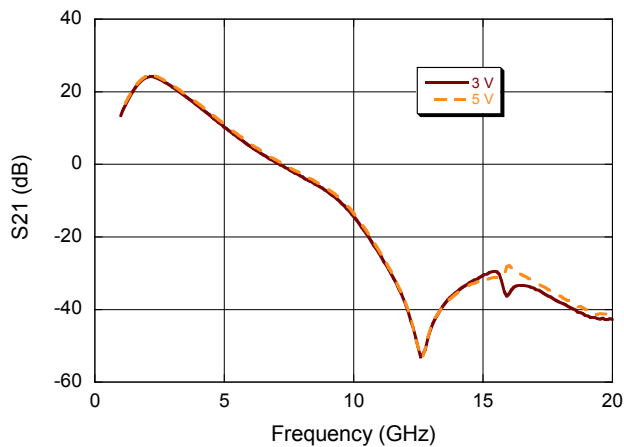
| Parameter          | Test Conditions                                       | Units | Min. | Typ. | Max. |
|--------------------|---|-------|------|------|------|
| Noise Figure       | -   | dB    | —    | 0.7  | —    |
| Gain               | -   | dB    | —    | 23   | —    |
| Input Return Loss  | -   | dB    | —    | 16   | —    |
| Output Return Loss | -   | dB    | —    | 10   | —    |
| Output IP3         | P <sub>IN</sub> = -22 dBm, tones 11 MHz apart         | dBm   | —    | 33.4 | —    |
| Total Current      | I <sub>DQ</sub> = I <sub>DD</sub> + I <sub>BIAS</sub> | mA    | —    | 50   | —    |

11. Typical performance of the evaluation module with exact components shown on the 2.3 - 2.7 GHz parts list.

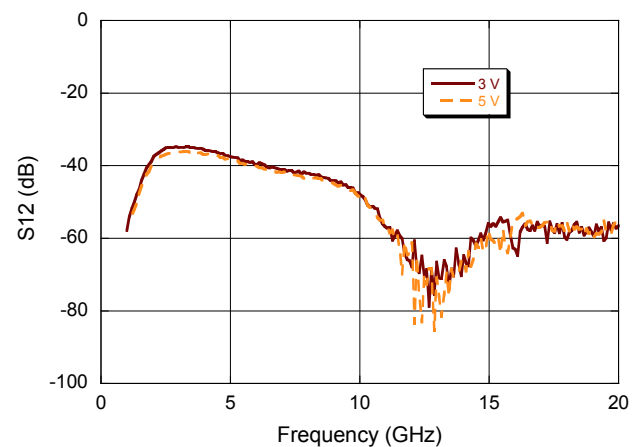
12. Typical measured data includes evaluation board and connector losses.

### Typical Performance Curves: Broadband performance (2.3 - 2.7 GHz evaluation board)

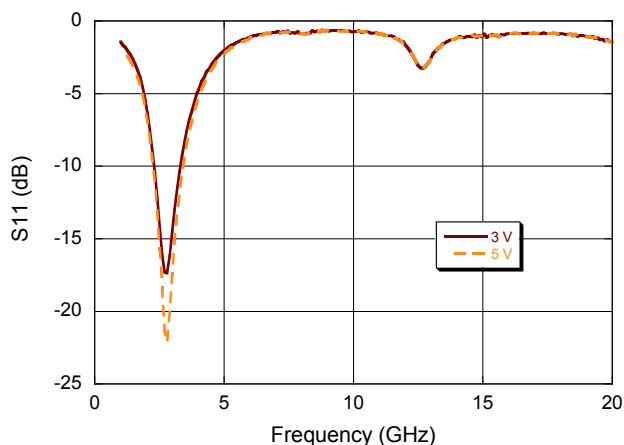
**Gain**



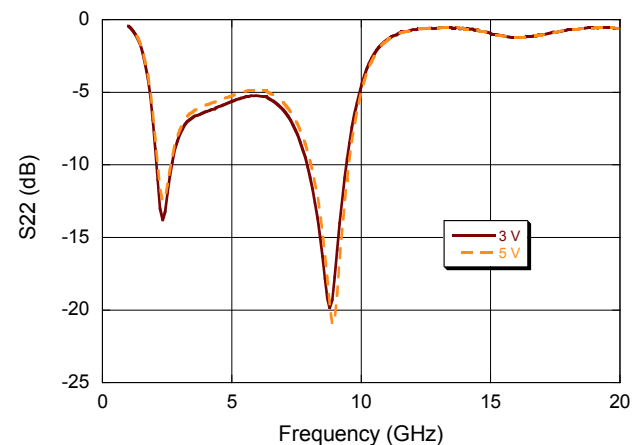
**Reverse Isolation**



**Input Return Loss**



**Output Return Loss**

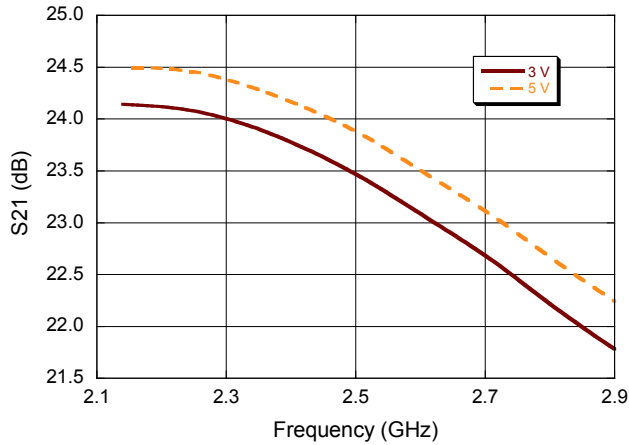


## Low Noise Amplifier 700 MHz - 6 GHz

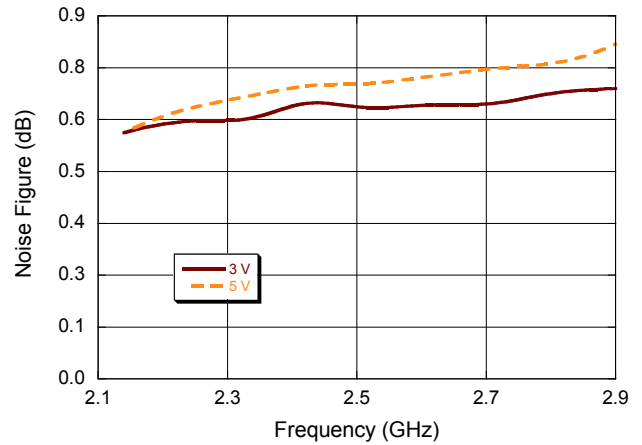
Rev. V3

### Typical Performance Curves: Freq = 2.3 - 2.7 GHz, $Z_0 = 50 \Omega$

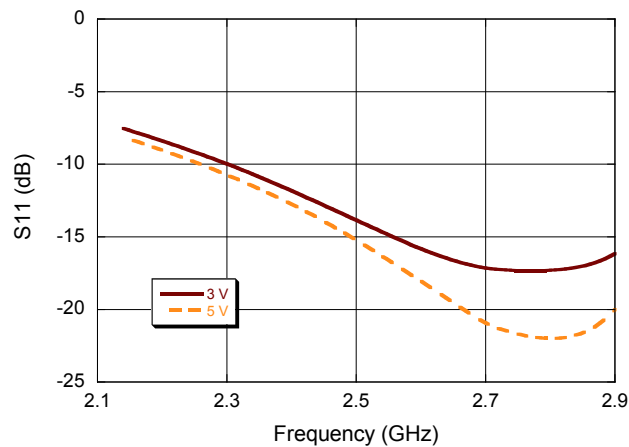
**Gain**



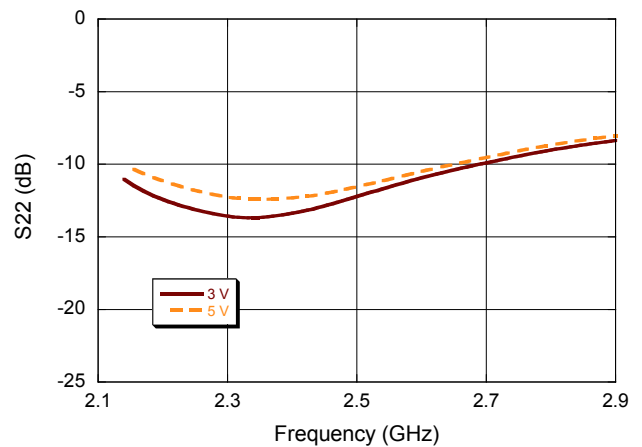
**Noise Figure**



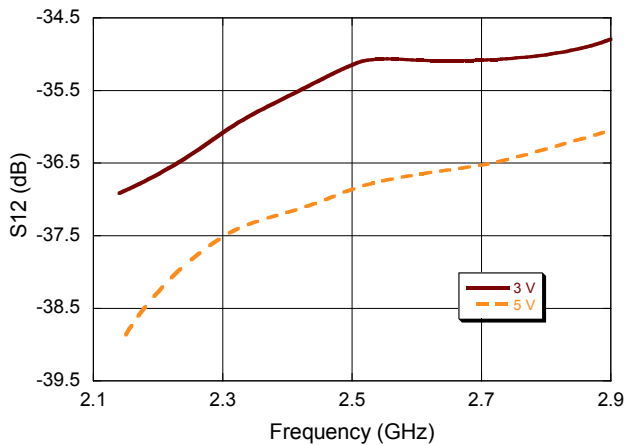
**Input Return Loss**



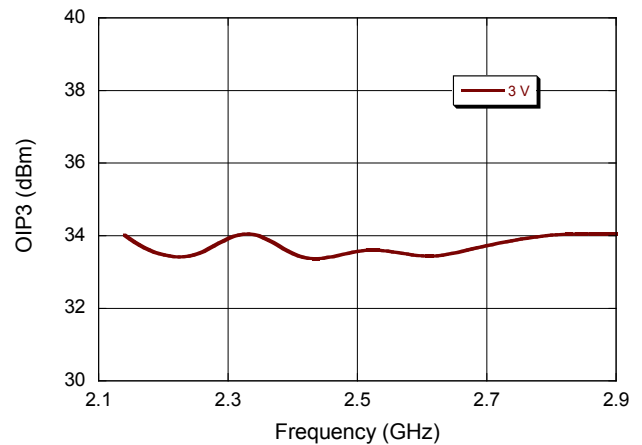
**Output Return Loss**



**Reverse Isolation**



**OIP3**



M/A-COM Technology Solutions Inc. All rights reserved.

Information in this document is provided in connection with M/A-COM Technology Solutions Inc ("MACOM") products. These materials are provided by MACOM as a service to its customers and may be used for informational purposes only. Except as provided in MACOM's Terms and Conditions of Sale for such products or in any separate agreement related to this document, MACOM assumes no liability whatsoever. MACOM assumes no responsibility for errors or omissions in these materials. MACOM may make changes to specifications and product descriptions at any time, without notice. MACOM makes no commitment to update the information and shall have no responsibility whatsoever for conflicts or incompatibilities arising from future changes to its specifications and product descriptions. No license, express or implied, by estoppel or otherwise, to any intellectual property rights is granted by this document.

THESE MATERIALS ARE PROVIDED "AS IS" WITHOUT WARRANTY OF ANY KIND, EITHER EXPRESS OR IMPLIED, RELATING TO SALE AND/OR USE OF MACOM PRODUCTS INCLUDING LIABILITY OR WARRANTIES RELATING TO FITNESS FOR A PARTICULAR PURPOSE, CONSEQUENTIAL OR INCIDENTAL DAMAGES, MERCHANTABILITY, OR INFRINGEMENT OF ANY PATENT, COPYRIGHT OR OTHER INTELLECTUAL PROPERTY RIGHT. MACOM FURTHER DOES NOT WARRANT THE ACCURACY OR COMPLETENESS OF THE INFORMATION, TEXT, GRAPHICS OR OTHER ITEMS CONTAINED WITHIN THESE MATERIALS. MACOM SHALL NOT BE LIABLE FOR ANY SPECIAL, INDIRECT, INCIDENTAL, OR CONSEQUENTIAL DAMAGES, INCLUDING WITHOUT LIMITATION, LOST REVENUES OR LOST PROFITS, WHICH MAY RESULT FROM THE USE OF THESE MATERIALS.

MACOM products are not intended for use in medical, lifesaving or life sustaining applications. MACOM customers using or selling MACOM products for use in such applications do so at their own risk and agree to fully indemnify MACOM for any damages resulting from such improper use or sale.