

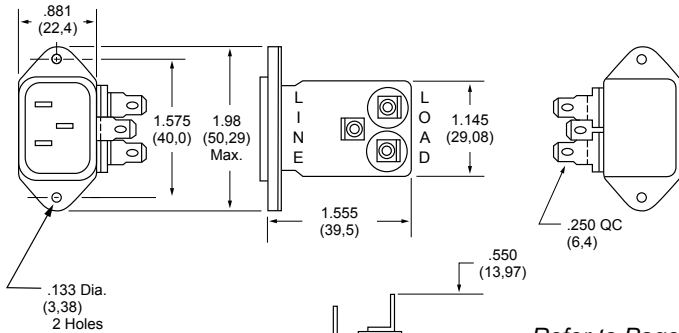
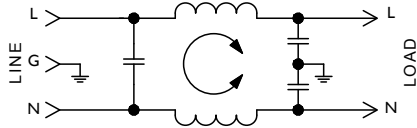
# F2199/F2200 RFI Filters



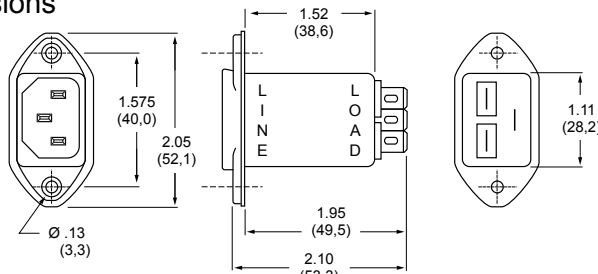
## Features:

- General Purpose Filters — Designed for Common Mode Emissions or Susceptibility Applications
- Integral IEC Connector in Space-Efficient Package
- Ideal for Linear Power Supplies in Digital Equipment

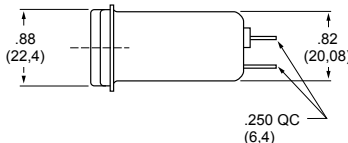
## F2199/F2200 Simplified Schematic



## F2200CA (1, 3 and 6Amp) Dimensions



## F2199CA (1, 3 and 6Amp) Dimensions



## Specifications:

**Rated Voltage:** 250VAC Maximum - 50/60 Hz

<b>Rated Current:</b>	115VAC	250VAC
	1A	1A
	3A	3A
	6A	6A
	10A	8A

**Current Overload:** 6X for 8 seconds

### Hi-Pot Test (1 min):

Line to Ground	1500VAC
Line to Line	1768VDC

**Insulation Resistance:**  $9 \times 10^9 \Omega$  at 100VDC

**Ambient Temperature:** 40°C Max. at rated current

**Humidity Range:** 0% to 95% R.H.

### Termination:

- A: QC – Quick Connect
- C: IEC Receptacle

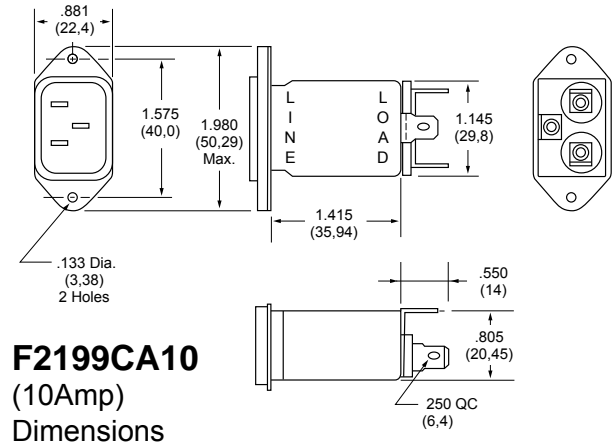
### Maximum Leakage Current:

Each Line to Ground	<b>F2100/F2200</b>
115VAC, 60Hz:	0.25mA
250VAC, 50Hz:	0.40mA

### Agency Approvals:



Refer to Page 58  
for Standard  
Mounting Cutouts



## F2199CA10 (10Amp) Dimensions

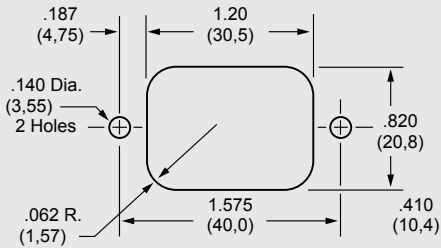
Nominal Current Rating	Part Number	Termination Line/Load	MINIMUM INSERTION LOSS - dB (50 ohm Circuit)						
			MODE	Frequency - MHz					
				.15	.50	1.0	5.0	10	30
1A	F2199CA01	IEC/QC	Common	22	35	40	46	50	50
	F2200CA01	IEC/QC	Differential	—	2	3	35	40	40
3A	F2199CA03	IEC/QC	Common	15	25	30	45	50	50
	F2200CA03	IEC/QC	Differential	—	2	3	35	40	40
6A	F2199CA06	IEC/QC	Common	10	20	29	43	45	50
	F2200CA06	IEC/QC	Differential	—	2	7	28	46	57
10A	F2199CA10	IEC/QC	Common	9	17	23	39	45	45
			Differential	—	2	7	12	37	60

NOTE: Other combinations of terminals may be specified on special order.

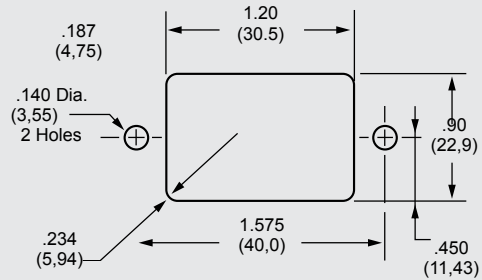


# Standard Mounting Cutouts

## F2199CA, F2200CA, F2300CA, F2400CA, F2500CA, F2700CA, F3100CA, F3200CA, F3400CA, F3500CA

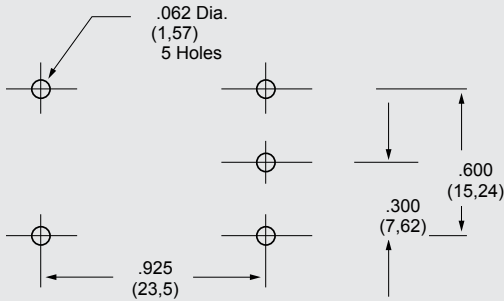


Back Mounting

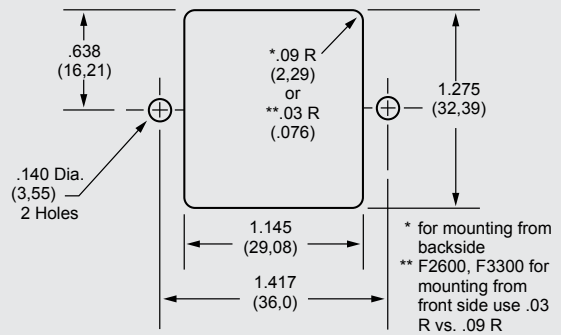


Front Mounting

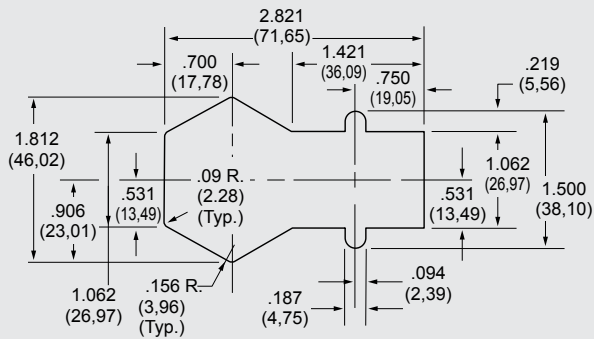
## F2600FP, F3300FP



## F2600, F3300



## F2700FB



## PE1 Screw Mount Series

