

# SMD Power Inductor CDRH26D11



Halogen  
Free



## Description

- Ferrite drum core construction.
- Magnetically shielded.
- L × W × H: 3.1 × 2.8 × 1.2 mm Max.
- Product weight: 30mg(Ref.)
- Moisture Sensitivity Level: 1
- RoHS compliance.
- Halogen Free available.

## Environmental Data

- Operating temperature range: -40°C~+105°C (including coil's self temperature rise)
- Storage temperature range: -40°C~+105°C
- Solder reflow temperature: 260 °C peak.

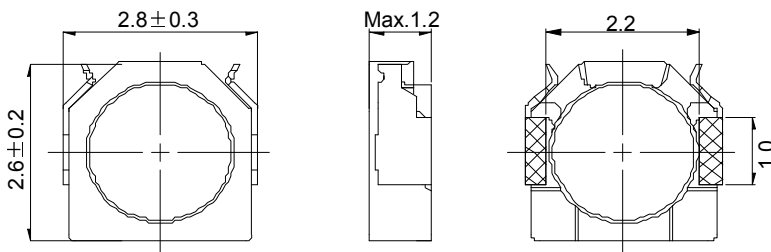
## Packaging

- Carrier tape and reel packaging
- 7.0" diameter reel
- 3000pcs per reel

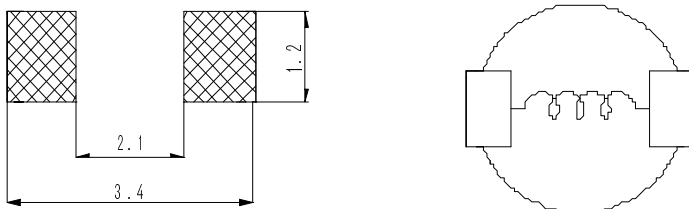
## Applications

- Ideally used in Mobilephone, PDA, MP3, DSC/DVC ,etc. as DC-DC converter inductors.

## Dimension - [mm]



## Land pattern and Schematics - [mm]



# SMD Power Inductor CDRH26D11



## Electrical Characteristics

Part No.	Stamp	Inductance [ $\mu$ H] [within] ※1	D.C.R. (m $\Omega$ ) [Max.] (Typ.) (at 20°C)	Saturation Current (A) ※2		Temperature Rise Current (A) ※3
				at 20°C	at 105°C	
CDRH26D11NP-1R0NC	A	1.0 $\pm$ 30%	67.5(54.0)	1.30	1.05	1.70
CDRH26D11NP-1R5PC	B	1.5 $\pm$ 25%	77.5(62.0)	1.20	0.98	1.60
CDRH26D11NP-2R2PC	C	2.2 $\pm$ 25%	111(81.1)	0.98	0.85	1.25
CDRH26D11NP-2R7PC	D	2.7 $\pm$ 25%	122(97.7)	0.88	0.74	1.15
CDRH26D11NP-3R3PC	E	3.3 $\pm$ 25%	135(108)	0.75	0.65	1.05
CDRH26D11NP-4R7PC	F	4.7 $\pm$ 25%	225(180)	0.64	0.52	0.80
CDRH26D11NP-5R6PC	G	5.6 $\pm$ 25%	261(209)	0.59	0.50	0.75
CDRH26D11NP-6R8PC	H	6.8 $\pm$ 25%	280(224)	0.56	0.45	0.70
CDRH26D11NP-8R2PC	I	8.2 $\pm$ 25%	386(309)	0.47	0.40	0.60
CDRH26D11NP-100PC	J	10 $\pm$ 25%	431(345)	0.44	0.38	0.52
CDRH26D11NP-120PC	K	12 $\pm$ 25%	601(481)	0.39	0.33	0.43
CDRH26D11NP-150PC	L	15 $\pm$ 25%	694(555)	0.36	0.31	0.40

※1. Inductance measuring condition: at 100kHz.

※2. Saturation current: The value of D.C. current when the inductance decreases to 70% of its nominal value.

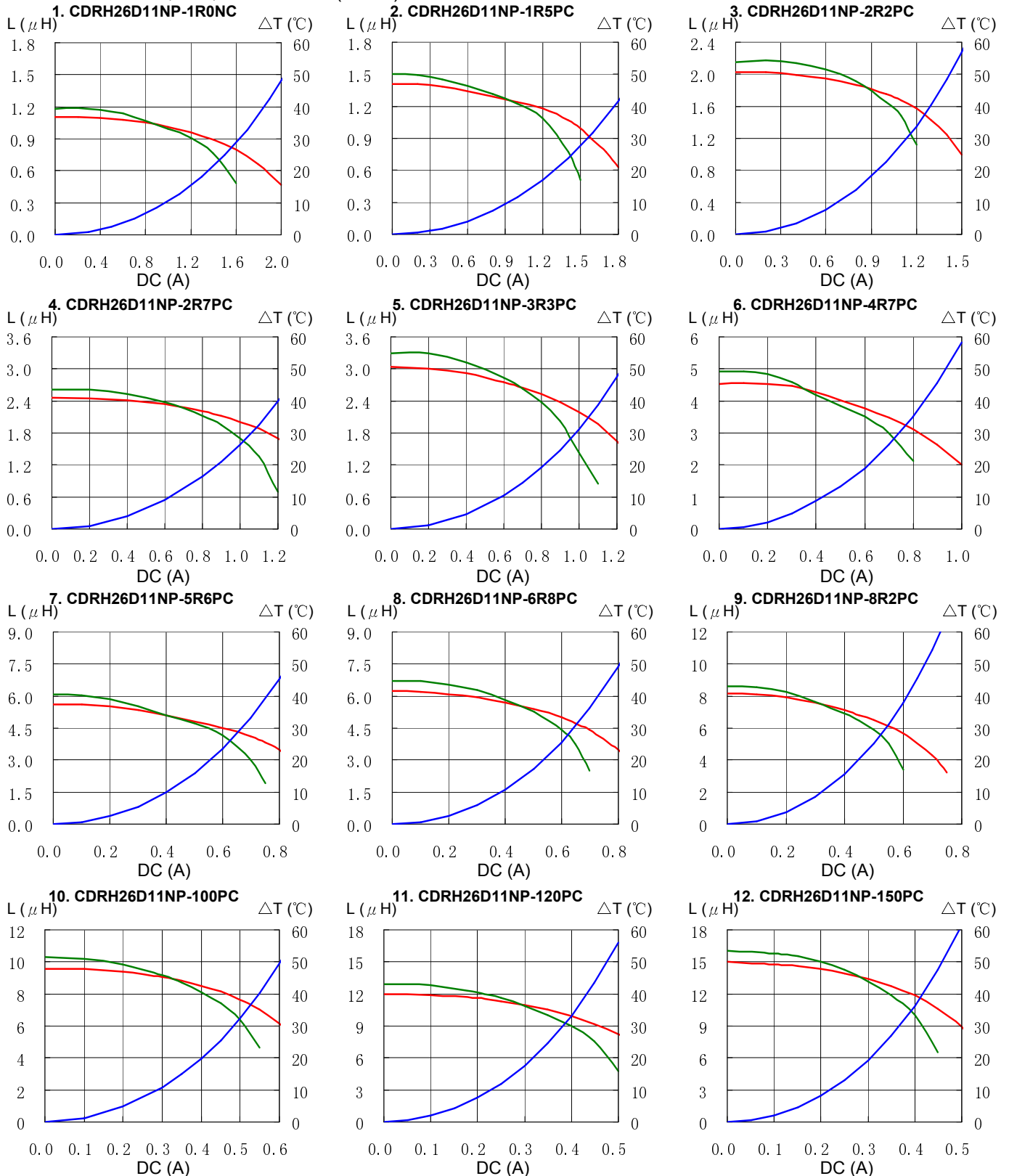
※3. Temperature rise current: The value of D.C. current when the temperature rise is  $\Delta t=40^{\circ}\text{C}$  ( $T_a=20^{\circ}\text{C}$ ).

# SMD Power Inductor CDRH26D11



## Saturation Current & Temperature Rise Graph

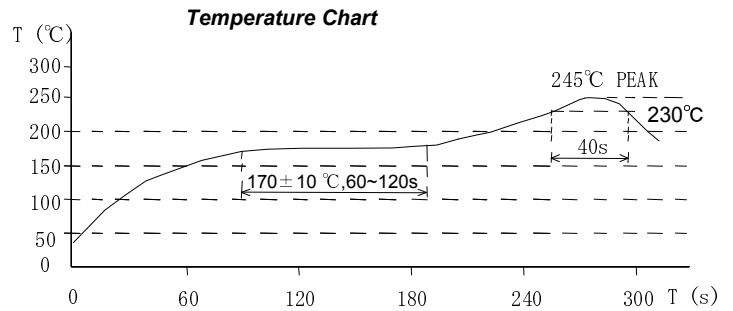
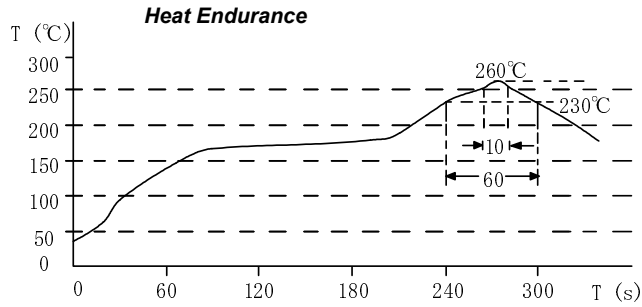
— L (20°C) — L (105°C) —  $\Delta T$



# SMD Power Inductor CDRH26D11



## Solder Reflow Condition



Please refer to the sales offices on our website - <http://www.sumida.com>

### Hong Kong

Tel.+852-2880-6781  
FAX.+852-2565-9600  
[sales@hk.sumida.com](mailto:sales@hk.sumida.com)

### Saitama(Japan)

Tel.+81-48-691-7300  
FAX.+81-48-691-7340  
[sales@jp.sumida.com](mailto:sales@jp.sumida.com)

### Chicago

Tel.+1-847-545-6700  
FAX. +1-847-545-6720  
[sales@us.sumida.com](mailto:sales@us.sumida.com)

### Shanghai

Tel.+86-21-5836-3299  
FAX.+86-21-5836-3266  
[shanghai.sales@cn.sumida.com](mailto:shanghai.sales@cn.sumida.com)

### Seoul

Tel.+82-2-6237-0777  
FAX.+82-2-6237-0778  
[sales@kr.sumida.com](mailto:sales@kr.sumida.com)

### Oberzell

Tel.+49-8591-937-0  
FAX. +49-8591-937-103  
[contact@eu.sumida.com](mailto:contact@eu.sumida.com)

### Shenzhen

Tel.+86-755-8291-0228  
FAX.+86-755-8291-0338  
[shenzhen.sales@cn.sumida.com](mailto:shenzhen.sales@cn.sumida.com)

### Singapore

Tel.+65-6296-3388  
FAX.+65-6841-4426  
[sales@sg.sumida.com](mailto:sales@sg.sumida.com)

### Neumarkt

Tel.+49-9181-4509-110  
FAX. +49-9181-4509-310  
[infocomp@eu.sumida.com](mailto:infocomp@eu.sumida.com)

### Taipei

Tel.+886-2-8751-2737  
FAX.+886-2-8751-2738  
[sales@tw.sumida.com](mailto:sales@tw.sumida.com)

### San Jose

Tel.+1-408-321-9660  
FAX.+1-408-321-9308  
[sales@us.sumida.com](mailto:sales@us.sumida.com)