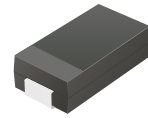


## CDBA220L-G Thru. CDBA240LL-G

**Forward Current: 2.0A**  
**Reverse Voltage: 20~40V**  
**RoHS Device**

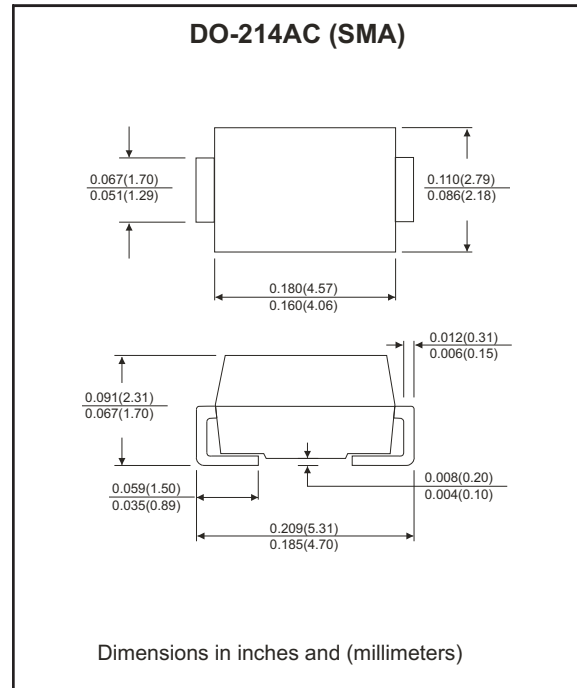


### Features

- Ideally for surface mount applications.
- Easy pick and place.
- Plastic package has Underwriters Lab. flammability classification 94V-0.
- Built-in strain relief.
- Super low forward voltage drop.

### Mechanical Data

- Case: JEDEC DO-214AC molded plastic.
- Terminals: solderable per MIL-STD-750, method 2026.
- Polarity: Color band denotes cathode end.
- Approx. Weight: 0.063 grams.



### Maximum Ratings and Electrical Characteristics

(at TA=25 °C unless otherwise noted)

Parameter	Symbol	CDBA220L-G	CDBA220LL-G	CDBA240L-G	CDBA240LL-G	Unit
Max. repetitive peak reverse voltage	V <sub>RRM</sub>	20	20	40	40	V
Max. DC blocking voltage	V <sub>DC</sub>	20	20	40	40	V
Max. RMS voltage	V <sub>RMS</sub>	14	14	28	28	V
Peak surge forward current, 8.3ms single half sine-wave superimposed on rated load (JEDEC method)	I <sub>FSM</sub>	50				A
Max. average forward current	I <sub>O</sub>	2.0				A
Max. instantaneous forward current at 2.0A	V <sub>F</sub>	0.38	0.34	0.40	0.36	V
Max. DC reverse current at T <sub>A</sub> =25 °C rated DC blocking voltage T <sub>A</sub> =80 °C	I <sub>R</sub>	1.0 40				mA
Max. thermal resistance (Note 1)	R <sub>θJA</sub> R <sub>θJA</sub>	75 17				°C/W
Max. operating junction temperature	T <sub>J</sub>	125				°C
Storage temperature range	T <sub>STG</sub>	-50 ~ +150				°C

Note1: Thermal resistance from junction to ambient and junction to lead P.C.B. mounted on 0.2x0.2 inch copper pad areas.

Company reserves the right to improve product design , functions and reliability without notice.

REV:A

## ELECTRICAL CHARACTERISTIC CURVES (CDBA220L-G Thru. CDBA240LL-G)

Fig.1 - Reverse Characteristics

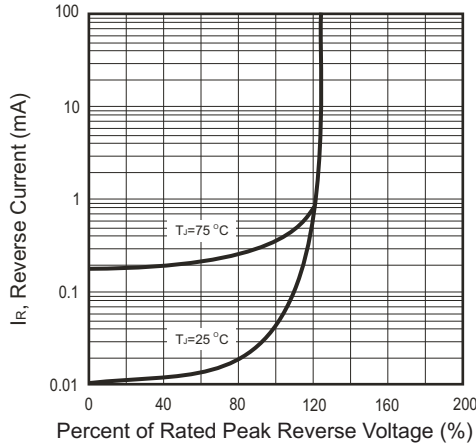


Fig.2 - Forward Characteristics

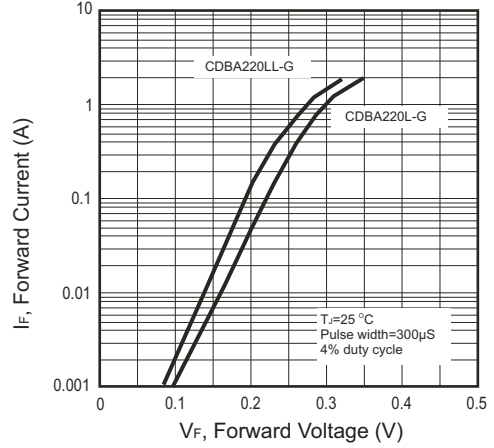


Fig.3 - Junction Capacitance

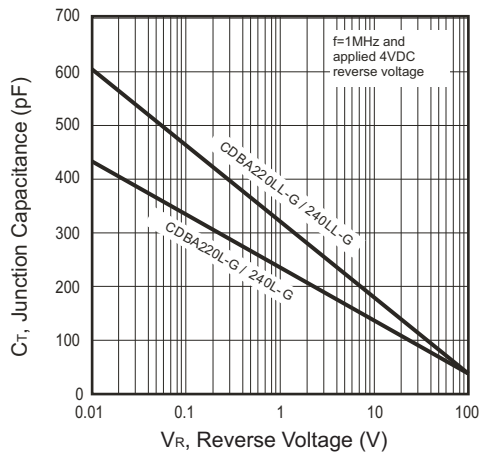


Fig.4 - Forward Characteristics

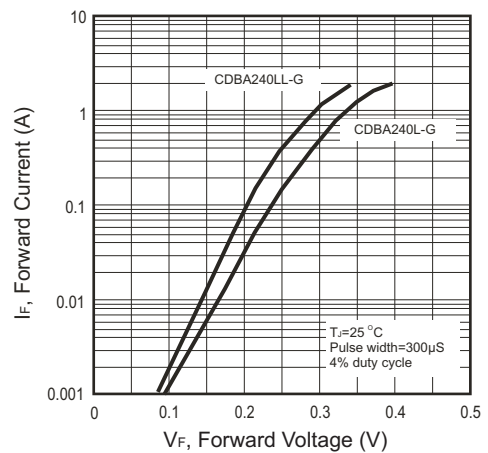


Fig.5 - Non-Repetitive Forward Surge Current

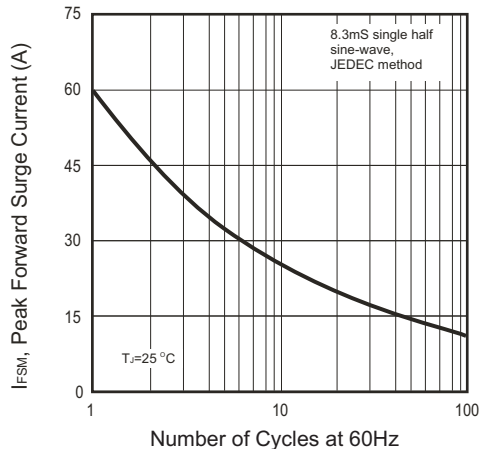
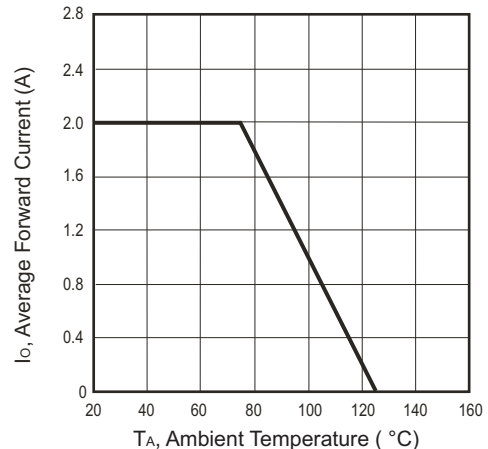


Fig.6 - Current Derating Curve



Company reserves the right to improve product design, functions and reliability without notice.

REV:A