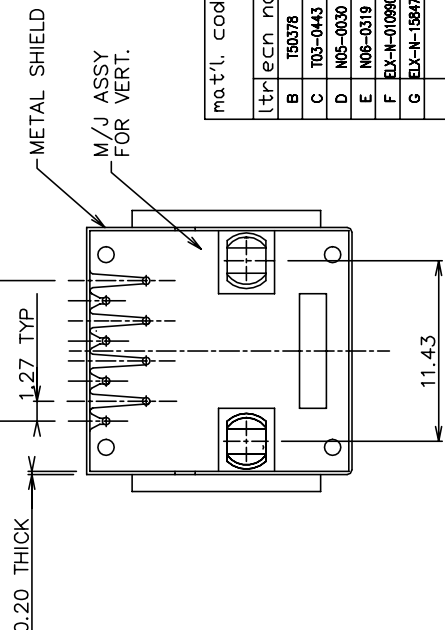
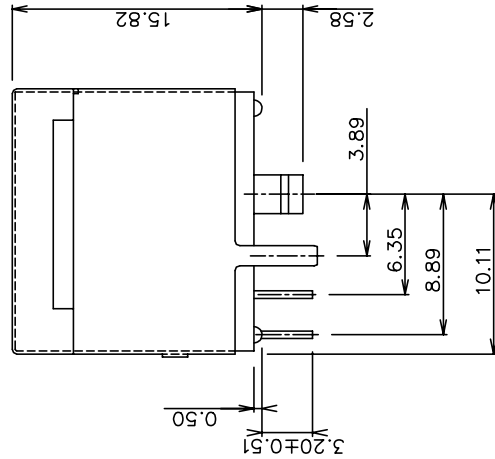


RECOMMENDED PC BOARD LAYOUT

NOTES:

1. RECOMMENDED P.C.B THICKNESS 1.60 MM
2. HOUSING MAT'L: NYLON 66, 25% G.F UL 94V-0, BLACK.
3. CONTACTS: PHOS BRONZE ALLOY UNS-C51000, ϕ 0.460 ROUND WIRE, PLATING SEE TABLE.
4. METAL SHELL MATERIAL:
COPPER ALLOY. 0.20mm THICK
FINISH:
FOR 94152-XXX TIN-LEAD 100 μ " THICK MIN.
FOR 94152-XXXLF PURE TIN 80 μ " THICK MIN.
5. PACKAGING: GES-14-351, USE TRAY
6. ALL DIMENSIONS IN MILLIMETER.
7. IF LF P/N THE PRODUCT MEETS EUROPEAN UNION DIRECTIVES AND OTHER COUNTRY REGULATIONS AS DESCRIBED IN GS-22-008.
8. THE HOUSING WILL WITHSTAND EXPOSURE TO 260°C PEAK TEMPERATURE FOR 10 SECONDS IN A WAVE SOLDER APPLICATION WITH A 1.60mm MINIMUM THICK CIRCUIT BOARD.
9. IF LF P/N PACKAGING MEETS GS-14-920 SPECIFICATION.



P/N	WIRE NUMBERS LOADED	PLATING
94152-088	ALL	5 μ " Au + high performance lubricant
94152-088LF	ALL	6 μ " GXT
94152-188LF	ALL	15 μ " GXT
94152-288LF	ALL	30 μ " GXT
94152-388LF	ALL	50 μ " GXT

mat'l. code	surface	tolerance	projection	product family
ISI1302	ISI1302	ISI1302	ISI1302	MOD JACK
trlec n dnr	date	tolerances unless otherw	spec	title
B T50378	CL 12/18/95	0.XX \pm 0.3	mm	8 POS VERT P.C.B. M/J ASSY
C T03-0443	WL 10/06/03	0.XX \pm 0.15	scale 2.0	SHIELDED
D N05-0030	YS 02/05/05	0.XXX \pm 0.05		awg no
E N06-0319	WG 12/28/08			sheet 1 of 1
F ELX-N-01099	SH 03/14/12	engr TONY CHIEN	09/16/93	A4
G ELX-N-1584	Henry 09/13/13	chr TONY CHIEN	09/16/93	Product
sheet	revising	appd JENN TSAO	09/16/93	Customer Drawing
index	Sheet 1			