

DESCRIPTION: ABOVE AND BELOW P.C.B., DECK AND PUSH-ROD LOCATION ARE AS VIEWED BY USER.

PRODUCT NO. 92882-XXXX NOTE ⑥	PCB SIDE	PUSH ROD LOCATION	SOLDER TAIL ⑤	STAND-OFF HEIGHT DIM "L"	EJ. HEADER ASSY 92856-XXX ④	EJ. MECHANISM ASSY 94307-XXXX ③	DIMENSION S	MOUNTING STYLE TO PCB AND PUSH-ROD LOCATION	
000CA	ABOVE	RIGHT	R/A	0.0	000	00CA	13.0		
000CH	ABOVE	RIGHT	R/A	0.0	000	00CH	13.0		
000DA	ABOVE	RIGHT	R/A	0.0	000	00DA	15.6		
001CA	ABOVE	RIGHT	SMT-STG	0.0	001	00CA	13.0		
002CA	ABOVE	RIGHT	SMT-IL	0.0	002	00CA			
020CA	ABOVE	RIGHT	R/A	2.0	040	02CA			
040CA	ABOVE	RIGHT	R/A	4.0	010	04CA			
050CA	ABOVE	RIGHT	R/A	5.0	020	05CA			
070CA	ABOVE	RIGHT	R/A	7.0	070	07CA			
100CA	ABOVE	LEFT	R/A	0.0	000	10CA			
101CA	ABOVE	LEFT	SMT-STG	0.0	001	10CA			
102CA	ABOVE	LEFT	SMT-IL	0.0	002	10CA			
120CA	ABOVE	LEFT	R/A	2.0	040	12CA			
140CA	ABOVE	LEFT	R/A	4.0	010	14CA			
150CA	ABOVE	LEFT	R/A	5.0	020	15CA			
170CA	ABOVE	LEFT	R/A	7.0	070	17CA			
500CA	BELOW	RIGHT	R/A	0.0	500	10CA			
501CA	BELOW	RIGHT	SMT-STG	0.0	501	10CA			
502CA	BELOW	RIGHT	SMT-IL	0.0	502	10CA			
520CA	BELOW	RIGHT	R/A	2.0	540	12CA			
540CA	BELOW	RIGHT	R/A	4.0	510	14CA			
550CA	BELOW	RIGHT	R/A	5.0	520	15CA			
600CA	BELOW	LEFT	R/A	0.0	500	00CA			
601CA	BELOW	LEFT	SMT-STG	0.0	501	00CA			
602CA	BELOW	LEFT	SMT-IL	0.0	502	00CA			
620CA	BELOW	LEFT	R/A	2.0	540	02CA			
640CA	BELOW	LEFT	R/A	4.0	510	04CA			
650CA	BELOW	LEFT	R/A	5.0	520	05CA			

NOTES:

1 MATERIAL:

1.1 HEADER ASSY:
 PLASTIC HOUSING: LCP UL94V-0 BLACK - ABOVE PCB
 LCP UL94V-0 NATURAL (WHITE) - BELOW PCB
 PIN: PHOSPHOR BRONZE

1.2 EJECT MECHANISM ASSY:
 PLASTIC GUIDE: POLYPHTHARAMID UL94V-0 BLACK
 PLASTIC PUSH-ROD BUTTON: POLYPHTHARAMID UL94V-0
 COLOR -00CH BLACK
 -000CH NATURAL

COVER PLATE, EJECT PLATE, LINK ARM,
 PUSH ROD: STAINLESS STEEL
 EMI CONTACT: PHOSPHOR BRONZE

2 FINISH (PIN)

UNDER PLATING: 0.5um MIN Ni
 CONTACT AREA: 0.1um MIN GOLD OVER
 0.5um MIN Pd-Ni
 SOLDER TAIL: 2.5um MIN Sn-Pb

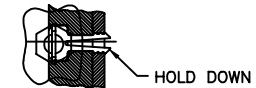
③ DIM "X"

4.25±.1	3.5±.1	5.0±.1
OTHERS	36,67	1,17,34,35,51,68

4 RECOMMENDED HOLD DOWN - 2mm SCREWS (95121)
 AND NUTS (92869). RECOMMENDED SCREW TORQUE: 1.0 TO
 1.5 MAX in-lbs. (1.2-1.7 cm-kgs).

⑤ SOLDER TAIL KEY:
 R/A = RIGHT ANGLE PIN-THROUGH-HOLE
 SMT-STG = STAGGERED SURFACE MOUNT
 SMT-IL = SURFACE MOUNT IN-LINE (SINGLE ROW)

⑥ ADD "H" TO PART NUMBER FOR
 OPTIONAL HOLD DOWN (2 PER ASSEMBLY
 IN EJECT MECHANISM).



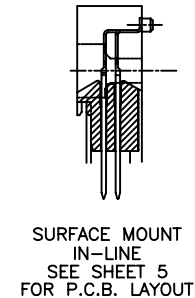
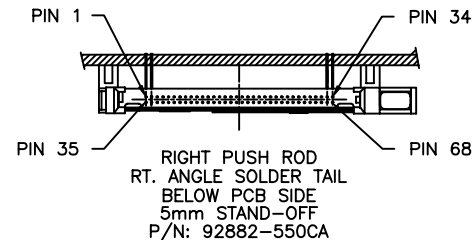
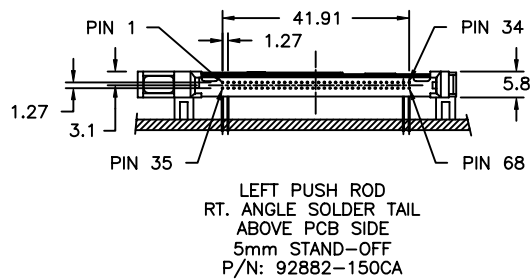
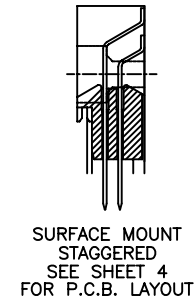
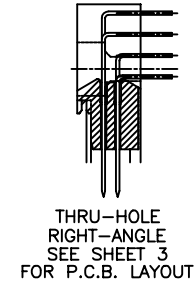
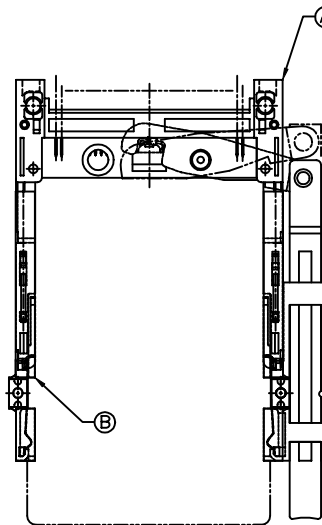
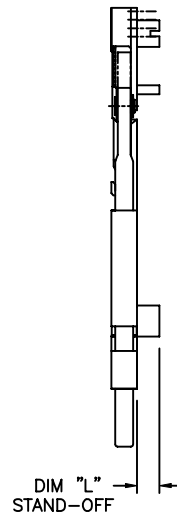
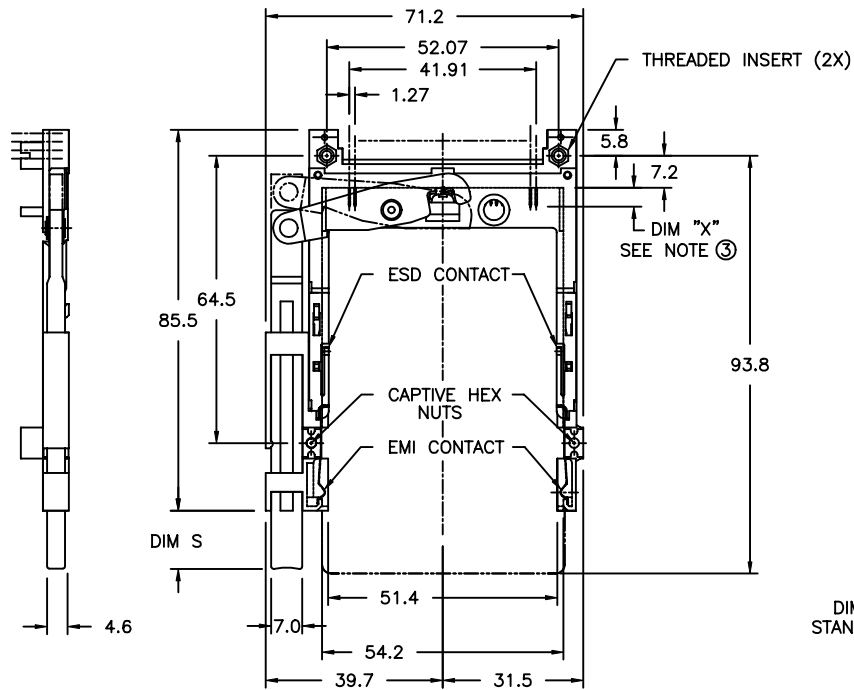
mat'l. code				tolerances unless otherwise specified			CUSTOMER COPY		Electronics FCI	
ltr	ecn no	dr	date	linear	.X±.3		projection		title	
A	S40055	LTS	3/15/94	linear	.XX±.13				EJECT HEADER ASSY WITH THREADED INSERTS	
B	V70117	RHG	2/17/97	angles	.XXX±.051		MM		product family MCS	
C	T60452	RGD	10/14/98	angles	0° ±2°		←→		code	
D	T00125	RGD	4/27/00	dr	R.GRAPE	2/17/97	scale		size	
E	V20517	LP	3/15/02	enr	D.BRANN	2/17/97	1:1		dwg no	
				chr	D.BRANN	2/17/97			A4 92882	
				appd	D.BRANN	2/17/97			sheet 1 of 6	
sheet index	revision sheet	E	E	E	E	E	E			
		1	2	3	4	5	6			

Tous droits strictement reserves. Reproduction ou communication a des tiers interdite sous quelque forme que ce soit sans autorisation ecrite du proprietaire. Propriete de c FCI. Droits de reproduction FCI.

All rights strictly reserved. Reproduction or issue to third parties in any form whatever is not permitted without written authority from the proprietor. Property of FCI. Copyright FCI.

Tous droits strictement reserves. Reproduction ou communication a des tiers interdite sous quelque forme que ce soit sans autorisation ecrite du proprietaire. Propriete de c FCI. Droits de reproduction FCI.

All rights strictly reserved. Reproduction or issue to third parties in any form whatever is not permitted without written authority from the proprietor. Property of FCI. Copyright FCI.



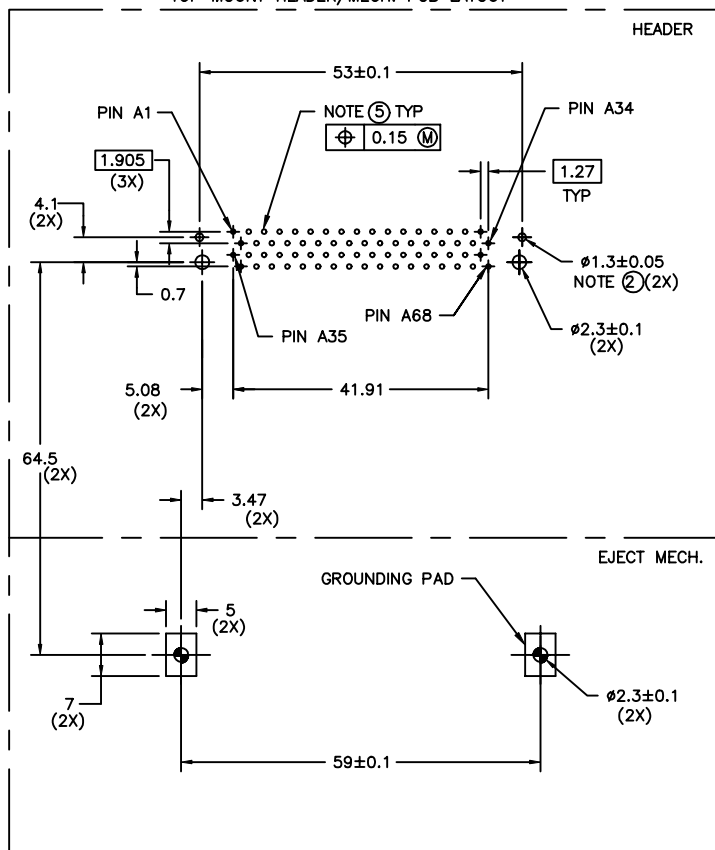
NOTES:

- REFER TO HEADER DRAWING 92856 AND EJECT MECHANISM 94307 FOR ADDITIONAL DIMENSIONS, MATERIAL, AND PLATING INFORMATION.

mat'l. code				tolerances unless otherwise specified				CUSTOMER COPY		Electronics www.fciconnect.com		
ltr	ecn no	dr	date	linear	.X±.3			projection	title			
E					.XX±.13				EJECT HEADER ASSY WITH THREADED INSERTS			
					.XXX±.051				product family MCS code -			
				angles	0° ±2°				size dwg no			
				dr	R.GRAPE	2/17/97	MM		A4		92882	sheet 2 of
				enr	D.BRANN	2/17/97			scale 1:1			
				chr	D.BRANN	2/17/97						
				appd	D.BRANN	2/17/97						
sheet index	revision sheet											

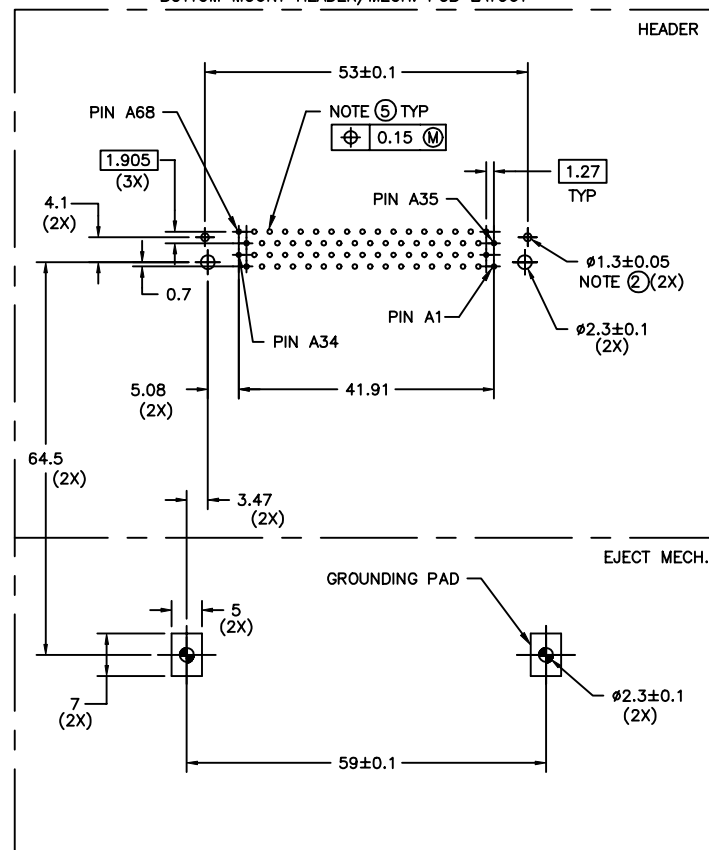
Single Mount Right Angle

FIGURE "A"
TOP MOUNT HEADER/MECH. PCB LAYOUT



BOARD VIEW FROM CONNECTOR MOUNTED SIDE
TOP OF BOARD IN APPLICATION

FIGURE "B"
BOTTOM MOUNT HEADER/MECH. PCB LAYOUT



BOARD VIEW FROM CONNECTOR MOUNTED SIDE
BOTTOM OF BOARD IN APPLICATION

NOTES:

- 1 ALL TOLERANCES ±0.15 UNLESS NOTED.
- ② THIS HOLE REQUIRED FOR HEADERS WITH BOARD LOCATOR.
- 3 KEEP-OUT ZONE FOR HEADERS W\STAND-OFF OPTIONS SEE SHEET 6 FIGURE A.
- 4 KEEP-OUT ZONE FOR HEADERS W\O STAND-OFF OPTIONS SEE SHEET 6 FIGURE B.
- ⑤ RECOMMENDED DIAMETER IS Ø1.0. FOR PROCESSES USING PASTE REFLOW, HOLE MAY BE AS SMALL AS Ø0.79

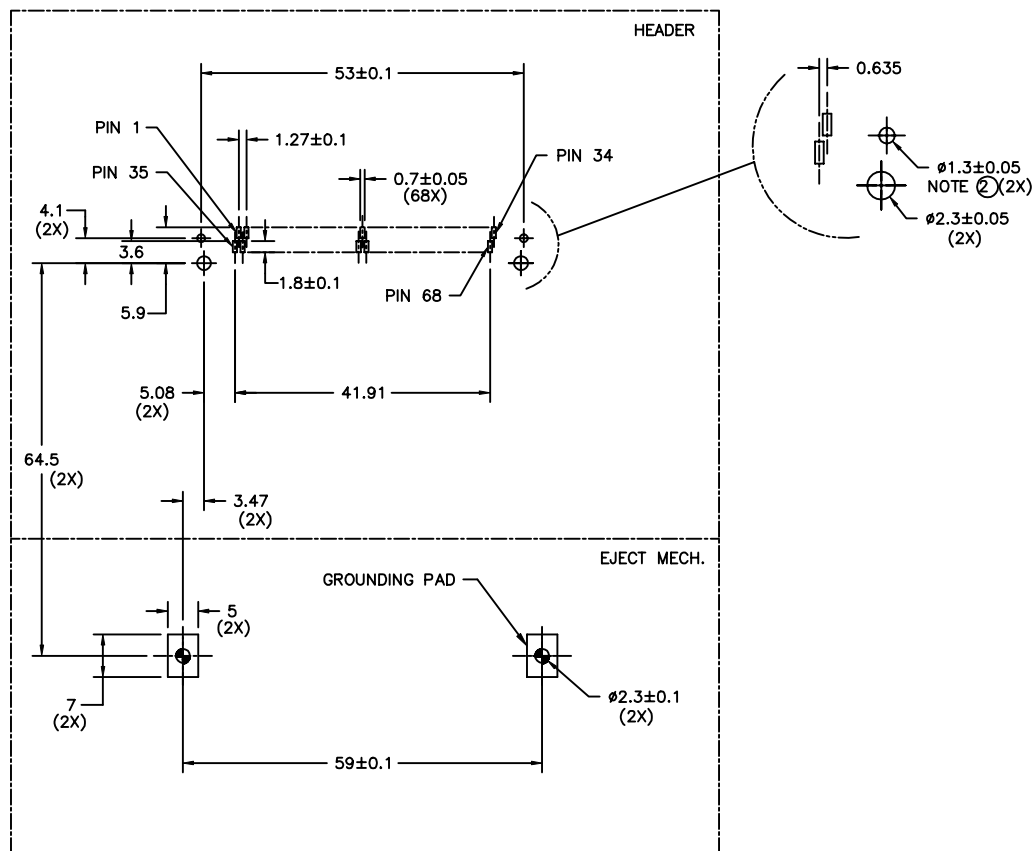
mat'l. code				tolerances unless otherwise specified				CUSTOMER COPY		 FCI www.fciconnect.com	
ltr	ecn no	dr	date	linear	.XX±.3		projection	title			
E					.XX±.13			EJECT HEADER ASSY WITH THREADED INSERTS			
					.XXX±.051			product family MCS code -			
				angles	0° ±2°		 scale 1:1	size		sheet 3 of	
				dr	R.GRAPE	2/17/97		A4		92882	
				enr	D.BRANN	2/17/97					
				chr	D.BRANN	2/17/97					
				appd	D.BRANN	2/17/97					
sheet index	revision sheet										

Tous droits strictement reserves. Reproduction ou communication a des tiers interdite sous quelque forme que ce soit sans autorisation ecrite du proprietaire. Propriete de c FCI. Droits de reproduction FCI.

All rights strictly reserved. Reproduction or issue to third parties in any form whatever is not permitted without written authority from the proprietor. Property of FCI. Copyright FCI.

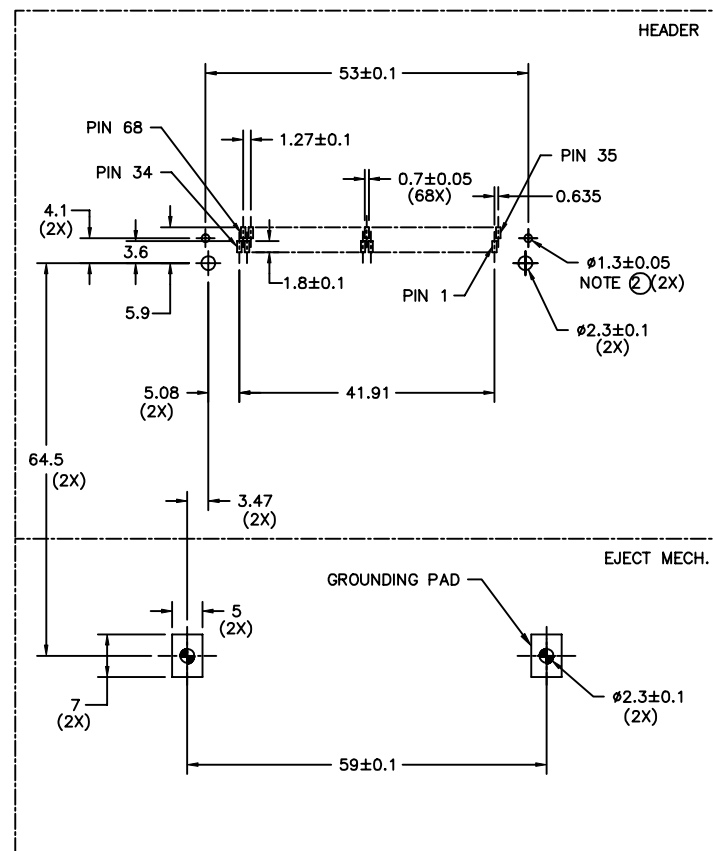
Surface Mount Staggered

FIGURE "A"
TOP MOUNT HEADER/MECH. PCB LAYOUT



BOARD VIEW FROM CONNECTOR MOUNTED SIDE
TOP OF BOARD IN APPLICATION

FIGURE "B"
BOTTOM MOUNT HEADER/MECH. PCB LAYOUT



BOARD VIEW FROM CONNECTOR MOUNTED SIDE
BOTTOM OF BOARD IN APPLICATION

NOTES:

- 1 ALL TOLERANCES ±0.15 UNLESS NOTED.
- 2 THIS HOLE REQUIRED FOR HEADERS WITH BOARD LOCATOR.
- 3 KEEP-OUT ZONE FOR HEADERS W/O STAND-OFF OPTIONS SEE SHEET 6 FIGURE B.

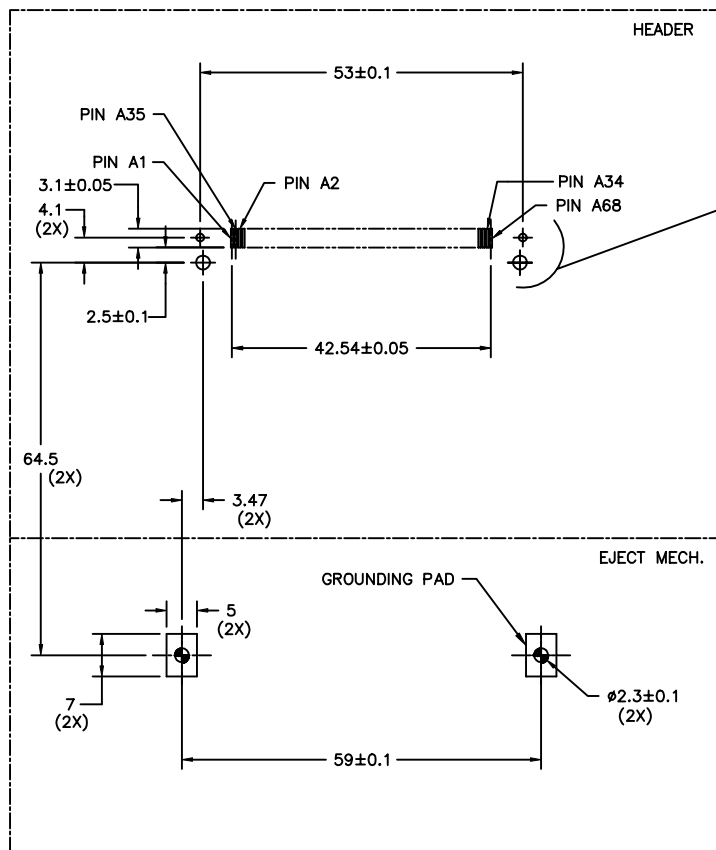
mat'l. code		tolerances unless otherwise specified		CUSTOMER COPY		 FCI www.fciconnect.com	
ltr	ecn no	dr	date	linear	.X±.3	projection	title
E					.XX±.13		
				angles	.XXX±.051	MM	product family
				dr	0° ±2°		
				enr	R.GRAPE 2/17/97	1:1	size
				chr	D.BRANN 2/17/97		
				appd	D.BRANN 2/17/97	sheet	4 of
sheet	revision						
index	sheet						

Tous droits strictement reserves. Reproduction ou communication a des tiers interdite sous quelque forme que ce soit sans autorisation ecrite du proprietaire. Propriete de c FCI. Droits de reproduction FCI.

All rights strictly reserved. Reproduction or issue to third parties in any form whatever is not permitted without written authority from the proprietor. Property of FCI. Copyright FCI.

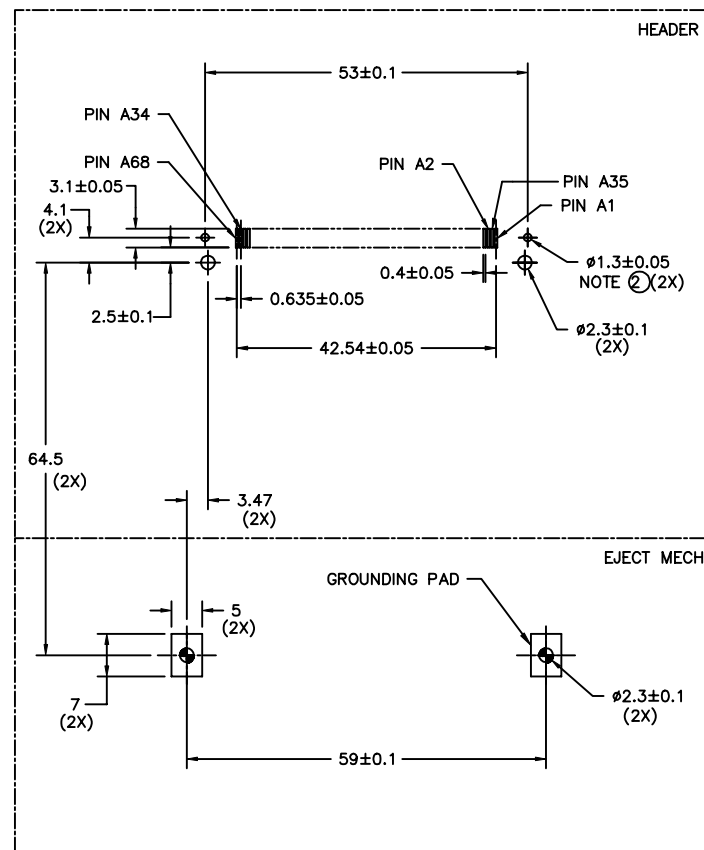
Surface Mount In-Line

FIGURE "A"
TOP MOUNT HEADER/MECH. PCB LAYOUT



BOARD VIEW FROM CONNECTOR MOUNTED SIDE
TOP OF BOARD IN APPLICATION

FIGURE "B"
BOTTOM MOUNT HEADER/MECH. PCB LAYOUT



BOARD VIEW FROM CONNECTOR MOUNTED SIDE
BOTTOM OF BOARD IN APPLICATION

NOTES:

- 1 ALL TOLERANCES ±0.15 UNLESS NOTED.
- ② THIS HOLE REQUIRED FOR HEADERS WITH BOARD LOCATOR.
- 3 KEEP-OUT ZONE FOR HEADERS W/O STAND-OFF OPTIONS SEE SHEET 6 FIGURE B.

mat'l. code		tolerances unless otherwise specified		CUSTOMER COPY		 FCI www.fciconnect.com				
ltr	ecn no	dr	date	linear	.X±.3	projection				
E					.XX±.13					
				angles	.XXX±.051		title EJECT HEADER ASSY WITH THREADED INSERTS			
					0° ±2°					
		dr	R.GRAPE	2/17/97	MM	scale	product family	MCS	code	
		enr	D.BRANN	2/17/97			size	dwg no	-	
		chr	D.BRANN	2/17/97			A4	92882	sheet	5 of
		appd	D.BRANN	2/17/97			1:1			
sheet index	revision sheet									

Tous droits strictement reserves. Reproduction ou communication a des tiers interdite sous quelque forme que ce soit sans autorisation ecrite du proprietaire. Propriete de c FCI. Droits de reproduction FCI.

All rights strictly reserved. Reproduction or issue to third parties in any form whatever is not permitted without written authority from the proprietor. Property of FCI. Copyright FCI.

Board Keep Out Zone

FIGURE "A"
KEEP OUT ZONE FOR STANDOFF VERSION

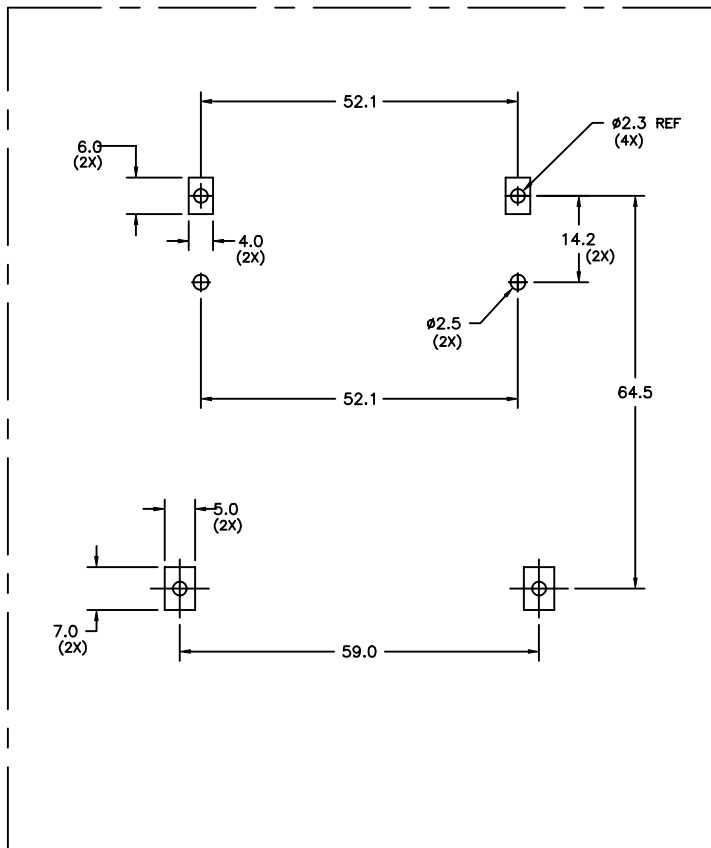
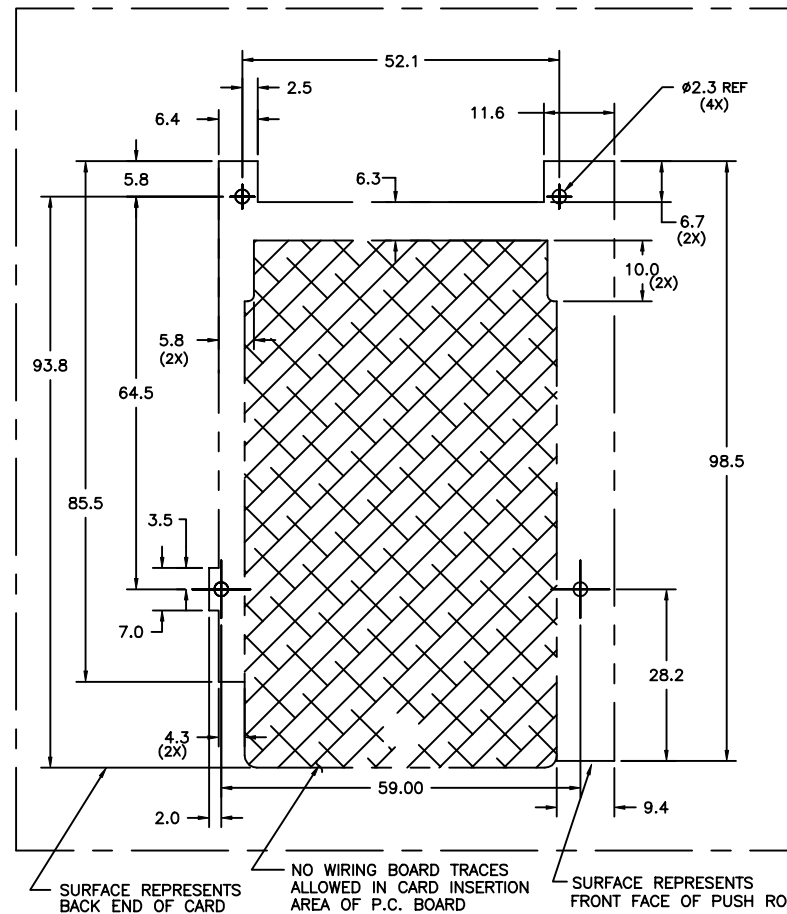


FIGURE "B" NOTE 1
KEEP OUT ZONE FOR NO STANDOFF VERSION
RIGHT HAND PUSHROD VERSION SHOWN
MIRROR IMAGE FOR LEFT HAND PUSHROD



SURFACE REPRESENTS BACK END OF CARD
 NO WIRING BOARD TRACES ALLOWED IN CARD INSERTION AREA OF P.C. BOARD
 SURFACE REPRESENTS FRONT FACE OF PUSH ROD

NOTES:

- ① ALL DIMENSIONS SHOWN ARE NOMINAL AND DEFINE THE OUTSIDE SURFACES OF THE MECHANISM. A MINIMUM OF 0.25mm (0.010") CLEARANCE BETWEEN THE MECHANISM AND ANY COMPONENTS IS SUGGESTED.

mat'l. code				tolerances unless otherwise specified		CUSTOMER COPY		 www.fciconnect.com	
ltr	ecn no	dr	date	linear	.X±.3		projection	title	
E					.XX±.13			EJECT HEADER ASSY WITH THREADED INSERTS	
					.XXX±.051			product family MCS code -	
				angles	0° ±2°		 MM	size dwg no	
				dr	R.GRAPE	2/17/97		A4 92882	
				enr	D.BRANN	2/17/97	scale 1:1		sheet 6 of
				chr	D.BRANN	2/17/97			
				appd	D.BRANN	2/17/97			
sheet index	revision sheet								

Tous droits strictement reserves. Reproduction ou communication a des tiers interdite sous quelque forme que ce soit sans autorisation ecrite du proprietaire. Propriete de c FCI. Droits de reproduction FCI.

All rights strictly reserved. Reproduction or issue to third parties in any form whatever is not permitted without written authority from the proprietor. Property of FCI. Copyright FCI.