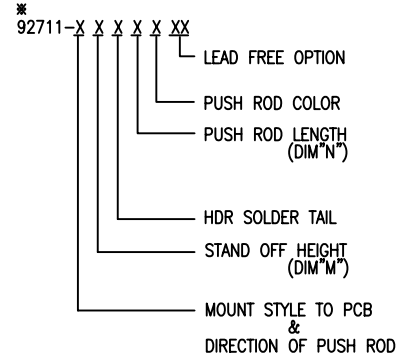


PRODUCT NO.

92711

PRODUCT NO. *92711-XXXX	STAND OFF DIM "M"(mm)	DIM "Q" (mm)	DIM "N" (mm)	(MECH) 92192-XXXX	(HDR) 92140-XXX	HDR COLOR	SHEET NO.	MOUNTING STYLE TO PCB & DIRECTION OF PUSH ROD
000CA	0	8.6	13	00CA	005	BLACK	NO.2	
000CALF	0	8.6	13	00CA	005LF	BLACK		
00FA	0	8.6	21	00FA	005	BLACK		
00FALF	0	8.6	21	00FA	005LF	BLACK		
020CA	2	10.3	13	00CA	045	BLACK		
020CALF	2	10.3	13	00CA	045LF	BLACK	NO.3	
100CA	0	8.6	13	10CA	005	BLACK		
100CALF	0	8.6	13	10CA	005LF	BLACK		
120CA	2	10.3	13	10CA	045	BLACK		
120CALF	2	10.3	13	10CA	045LF	BLACK		
120GALF	2	10.3	13	10GALF	045LF	BLACK	NO.4	
120FA	2	10.3	21	10FA	045	BLACK		
120FALF	2	10.3	21	10FA	045LF	BLACK		
500CA	0	8.6	13	10CA	505	NATURAL		
500CALF	0	8.6	13	10CA	505LF	NATURAL		
520CA	2	10.3	13	10CA	545	NATURAL		
520CALF	2	10.3	13	10CA	545LF	NATURAL		
600CA	0	8.6	13	00CA	505	NATURAL		
600CALF	0	8.6	13	00CA	505LF	NATURAL		
600FA	0	8.6	21	00FA	505	NATURAL		
600FALF	0	8.6	21	00FA	505LF	NATURAL		
620CA	2	10.3	13	00CA	545	NATURAL		
620CALF	2	10.3	13	00CA	545LF	NATURAL		

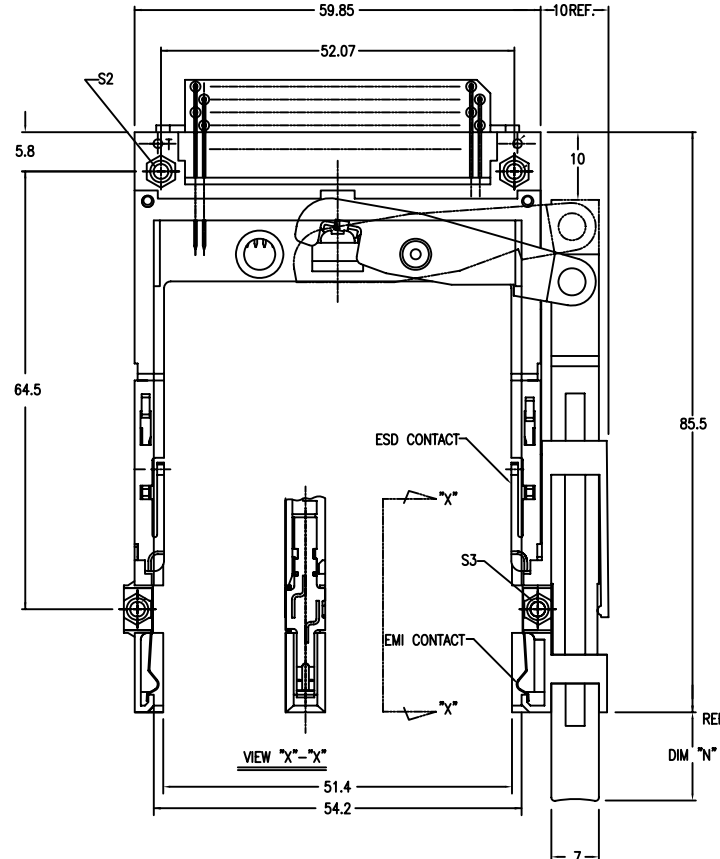
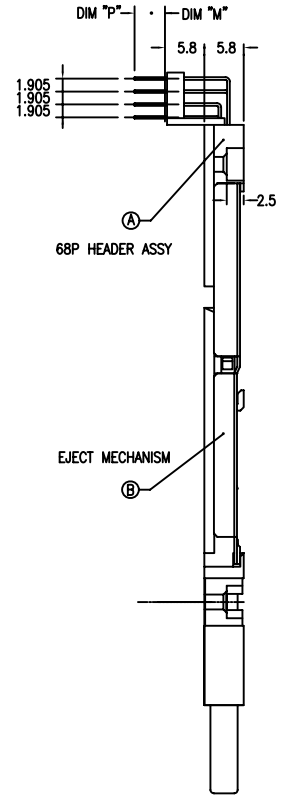


NONE : NO  
 LF : YES (SEE NOTE5)  
 A : BLACK  
 C : 13mm  
 F : 21mm  
 G : 27mm  
 0 : R/A  
 0 : 0mm(NONE)  
 2 : 2mm  
 0 : TOP MOUNT & RIGHT-LEFT PUSH ROD  
 1 : TOP MOUNT & LEFT-RIGHT PUSH ROD  
 5 : BOTTOM MOUNT & RIGHT-LEFT PUSH ROD  
 6 : BOTTOM MOUNT & LEFT-RIGHT PUSH ROD

NOTE  
 1.THIS PRODUCT MEETS EUROPEAN UNION DIRECTIVES AND OTHER COUNTRY REGULATIONS AS DESCRIBED IN GS-22-008.  
 2.PRODUCT SPEC: 110-263

mat'l. code		surface ISO1302 <input checked="" type="checkbox"/> ISO1302 ISO1101		tolerance ISO1302 ISO1101		projection 		product family PCMCIA		
ltr	ecn no	dr	date	tolerances unless otherwise specified				title		
G	ELX-N-20913	J.H	05/21/15	angles	0.X±0.3	MM		68P DOUBLE EJECTOR HEADER ASSY FOR TYPE I/II/III(UPPER DECK)		
				0°±x'	0.XX±0.13	scale 2:1		dwg no 92711 sheet. 1 of 5 size A4		
				dr	M.HASEGAWO	06/17/05			type Product Customer Drawing	
				enr	M.HASEGAWO	06/17/05				
				chr	M.HASEGAWO	06/20/05				
				app	M.HASEGAWO	06/20/05				
sheet index	revision sheet									

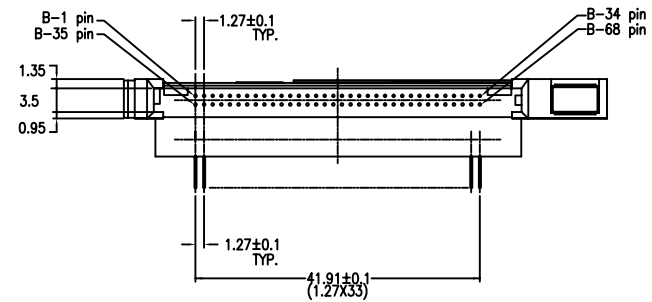
PART NO.	
92711-000CA	92711-000CALF
92711-000FA	92711-000FALF
92711-020CA	92711-020CALF



NOTE

1. EJECT FORCE 3.5kg MAX.
2. ASSY PROCESS TO ASSY AFTER SETTING THIS HDR ONTO APPLICABLE HDR FOR LOWER DECK
3. EJECT TRAVEL 8.0mm
- ④ MATERIAL
  - 4.1 PART ④ (HEADER ASSY)  
PLASTIC : HIGH TEMPERATURE THERMOPLASTIC UL94V-0 BLACK  
PIN : COPPER ALLOY
  - 4.2 PART ⑤ (EJECT MECHANISM ASSY)  
PLASTIC : HIGH TEMPERATURE THERMOPLASTIC UL94V-0 BLACK  
PLATE : STAINLESS  
EMI CONTACT : COPPER ALLOY
- ⑤ -1 FINISH (PIN)  
UNDER PLATING : 0.5 μm MIN. Ni  
CONTACT AREA : 0.1μm MIN. GOLD OVER 0.5UM Min Pd-Ni  
SOLDER TAIL : 2.5 μm MIN. Sn-Pb.
- ⑤ -2 FINISH (PIN) (FOR -\*\*\*\*\*LF)  
UNDER PLATING : 0.5 μm MIN. Ni  
CONTACT AREA : 0.1μm MIN. GOLD OVER 0.5UM Min Pd-Ni  
SOLDER TAIL : 2.5 μm MIN. Sn.

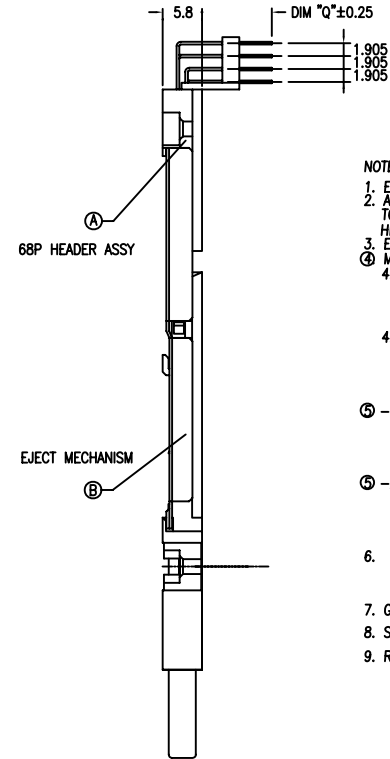
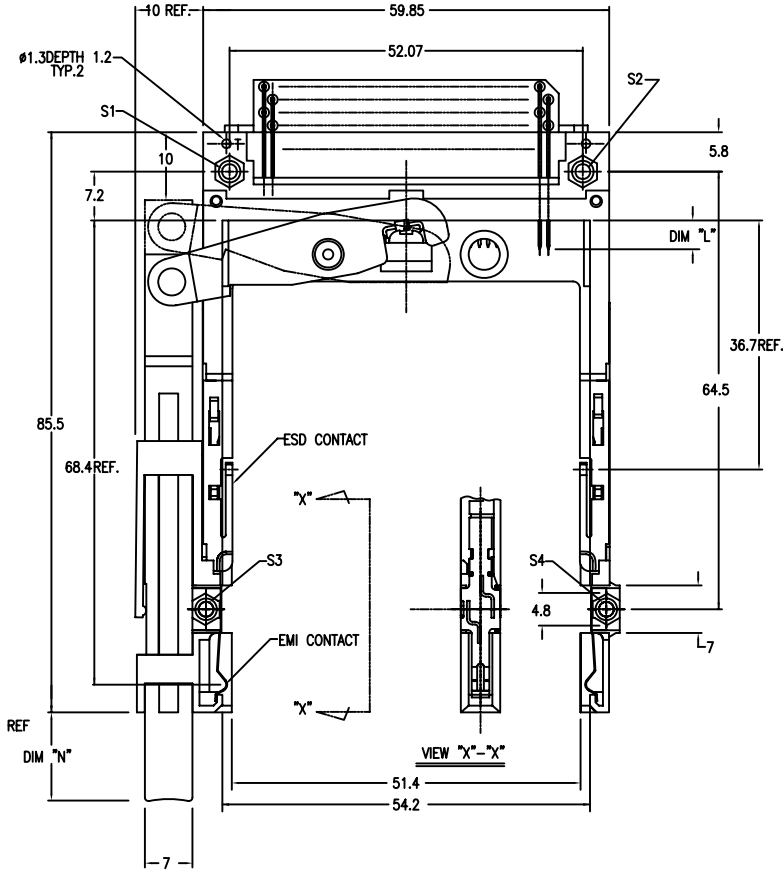
DIM "L"	4.25±0.1	3.5±0.1	5.0±0.1
PIN NUMBER	OTHERS	36.67	17.34 36.51.08



mat'l. code	surface	tolerance	projection	product family
	ISO1302	ISO1302 ISO1101		PCMCIA
ltr	ecn no	dr	date	title
				68P DOUBLE EJECTOR HEADER ASSY FOR TYPE I/II/III(UPPER DECK)
g				dwg no
				92711
				sheet. 2 of 5
				size
				A4
				type
				Product Customer Drawing
sheet index	revision sheet			



PRODUCT NO.	
92711-100CA	92711-100CALF
92711-120CA	92711-120CALF
92711-120FA	92711-120FALF
92711-120GALF	



NOTE

- EJECT FORCE 3.5kg MAX.
- ASSY PROCESS TO ASSY AFTER SETTING THIS HDR ONTO APPLICABLE HDR FOR LOWER DECK
- EJECT TRAVEL 8.0mm
- MATERIAL
  - PART (A) (HEADER ASSY)  
PLASTIC : HIGH TEMPERATURE THERMOPLASTIC UL94V-0 BLACK  
PIN : COPPER ALLOY
  - PART (B) (EJECT MECHANISM ASSY)  
PLASTIC : HIGH TEMPERATURE THERMOPLASTIC UL94V-0 BLACK  
PLATE : STAINLESS  
EMI CONTACT : COPPER ALLOY
- FINISH (PIN)
  - UNDER PLATING : 0.5 μm MIN. Ni  
CONTACT AREA : 0.1 μm MIN. GOLD OVER 0.5 μm MIN Pd-Ni  
SOLDER TAIL : 2.5 μm MIN. Sn-Pb.
  - FINISH (PIN) (FOR -\*\*\*\*LF)  
UNDER PLATING : 0.5 μm MIN. Ni  
CONTACT AREA : 0.1 μm MIN. GOLD OVER 0.5 μm MIN Pd-Ni  
SOLDER TAIL : 2.5 μm MIN. Sn.

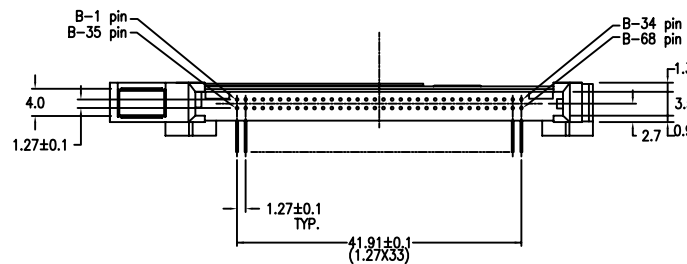
DIM "L"	4.25±0.1	3.5±0.1	5.0±0.1
PIN NUMBER	OTHERS	36,67	117,34 35,51,68

A

A

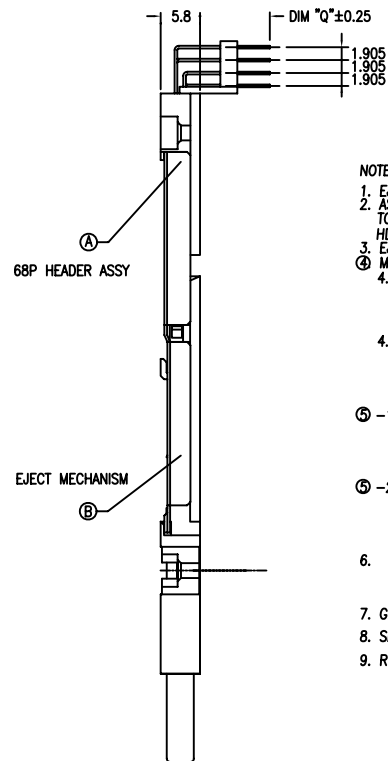
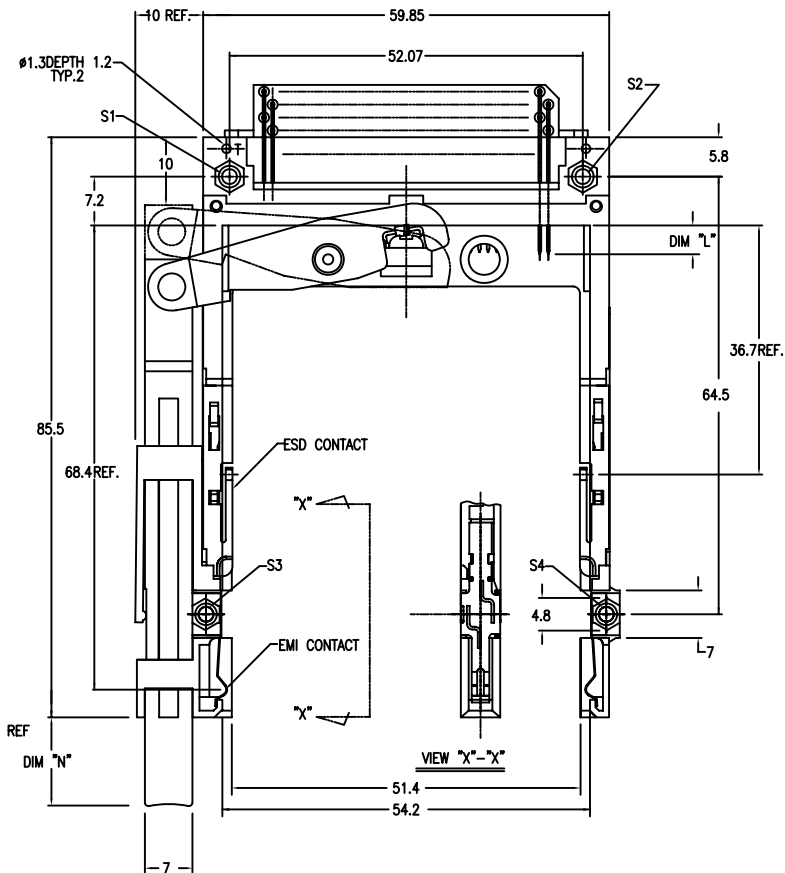
B

B



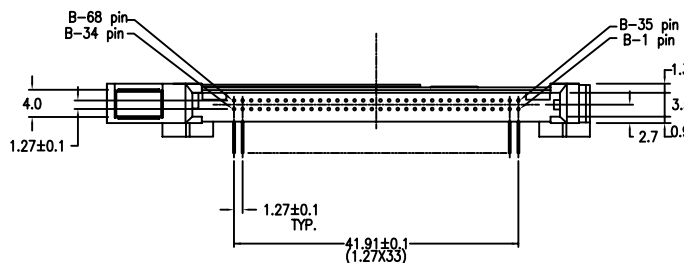
mat'l. code	surface	tolerance	projection	product family
	ISO1302	ISO1302 ISO1101		PCMCIA
ltr	ecn no	dr	date	title
g				68P DOUBLE EJECTOR HEADER ASSY FOR TYPE I/II/III(UPPER DECK)
				dwg no
				sheet. 3 of 5
				size
				A4
				type
				Product Customer Drawing
sheet index	revision sheet			

PRODUCT NO.	
92711-500CA	92711-500CALF
92711-520CA	92711-520CALF



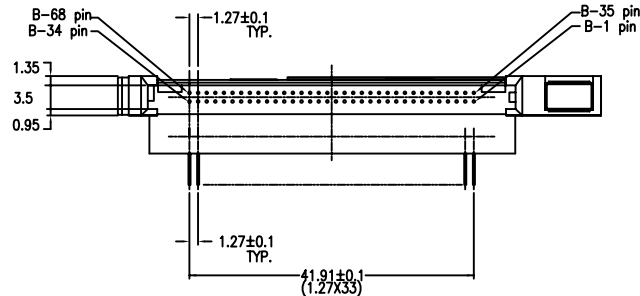
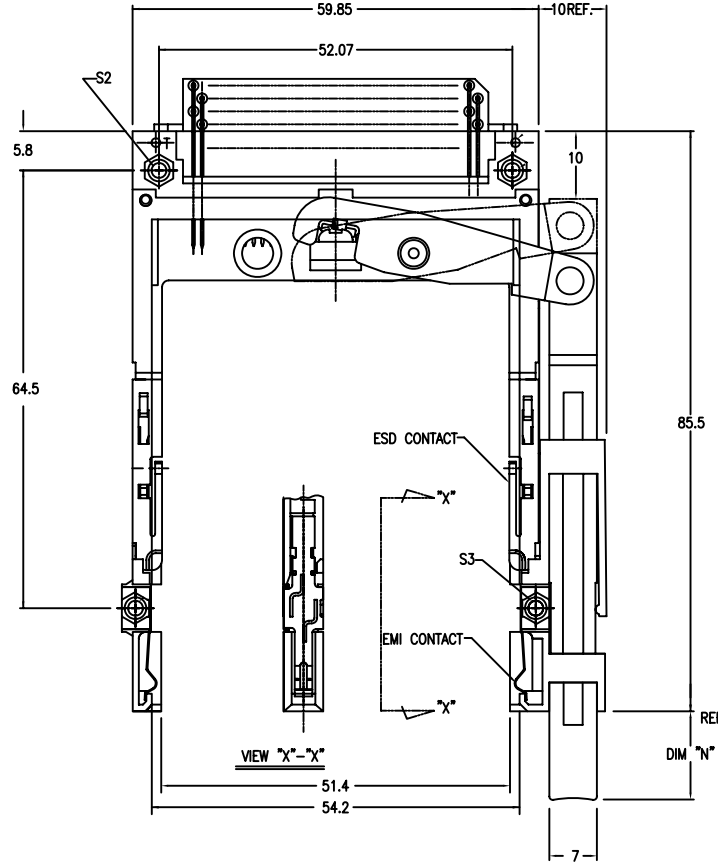
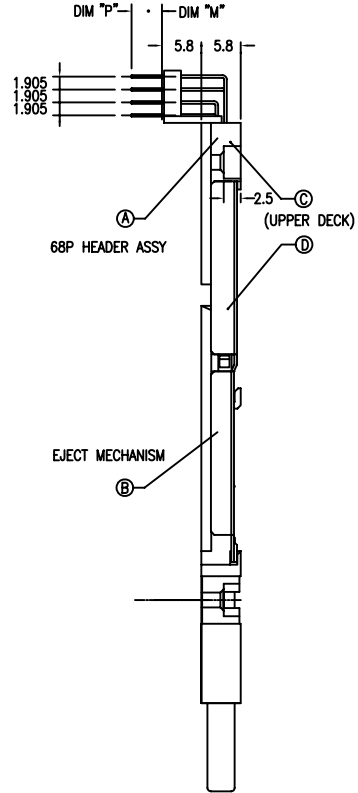
NOTE

- EJECT FORCE 3.5kg MAX.
- ASSY PROCESS TO ASSY AFTER SETTING THIS HDR ONTO APPLICABLE HDR FOR LOWER DECK
- EJECT TRAVEL 8.0mm
- MATERIAL
  - 4.1 PART (A) (HEADER ASSY)  
PLASTIC : HIGH TEMPERATURE THERMOPLASTIC UL94V-0 BLACK  
PIN : COPPER ALLOY
  - 4.2 PART (B) (EJECT MECHANISM ASSY)  
PLASTIC : HIGH TEMPERATURE THERMOPLASTIC UL94V-0 BLACK  
PLATE : STAINLESS  
EMI CONTACT : COPPER ALLOY
- FINISH (PIN)
  - 1 UNDER PLATING : 0.5 μm MIN. Ni  
CONTACT AREA : 0.1 μm MIN. GOLD OVER 0.5UM Min Pd-Ni  
SOLDER TAIL : 2.5 μm MIN. Sn-Pb.
  - 2 FINISH (PIN) (FOR -\*\*\*\*LF)  
UNDER PLATING : 0.5 μm MIN. Ni  
CONTACT AREA : 0.1 μm MIN. GOLD OVER 0.5UM Min Pd-Ni  
SOLDER TAIL : 2.5 μm MIN. Sn.
- |            |          |         |                 |
|------------|----------|---------|-----------------|
| DIM "L"    | 4.25±0.1 | 3.5±0.1 | 5.0±0.1         |
| PIN NUMBER | OTHERS   | 36.67   | 1174<br>3521.68 |
- GENERAL TOLERANCE : ±0.3
- SEE SHEET 1 REGARDING COMPONENTS
- RECOMMENDED FOOT PRINT REFER TO THE DEAWINGS PN 92194SERIES



mat'l. code	surface	tolerance	projection	product family
	ISO1302	ISO1302 ISO1101		PCMCIA
ltr	ecn no	dr	date	title
g				68P DOUBLE EJECTOR HEADER ASSY FOR TYPE I/II/III(UPPER DECK)
				dwg no
				sheet. 4 of 5
				size
				A4
				type
				Product Customer Drawing
sheet index	revision sheet			

PART NO.	
92711-600CA	92711-600CALF
92711-600FA	92711-600FALF
92711-620CA	92711-620CALF



NOTE

1. EJECT FORCE 3.5kg MAX.
2. ASSY PROCESS TO ASSY AFTER SETTING THIS HDR ONTO APPLICABLE HDR FOR LOWER DECK
3. EJECT TRAVEL 8.0mm
- ④ MATERIAL
  - 4.1 PART ④ (HEADER ASSY)  
PLASTIC : HIGH TEMPERATURE THERMOPLASTIC UL94V-0 BLACK  
PIN : COPPER ALLOY
  - 4.2 PART ④ (EJECT MECHANISM ASSY)  
PLASTIC : HIGH TEMPERATURE THERMOPLASTIC UL94V-0 BLACK  
PLATE : STAINLESS  
EMI CONTACT : COPPER ALLOY
- ⑤ -1 FINISH (PIN)  
UNDER PLATING : 0.5 μm MIN. Ni  
CONTACT AREA : 0.1μm MIN. GOLD OVER 0.5UM Min Pd-Ni  
SOLDER TAIL : 2.5 μm MIN. Sn-Pb.
- ⑤ -2 FINISH (PIN) (FOR -\*\*\*\*LF)  
UNDER PLATING : 0.5 μm MIN. Ni  
CONTACT AREA : 0.1μm MIN. GOLD OVER 0.5UM Min Pd-Ni  
SOLDER TAIL : 2.5 μm MIN. Sn.

6.	DIM "L"	4.25±0.1	3.5±0.1	5.0±0.1
	PIN NUMBER	OTHERS	36,67	117,34 35,51,68

7. GENERAL TOLERANCE : ±0.3
8. SEE SHEET 1 REGARDING COMPONENTS
9. RECOMMENDED FOOT PRINT  
REFER TO THE DEAWINGS PN 92194SERIES

mat'l. code	surface	tolerance	projection	product family
	ISO1302	ISO1302 ISO1101		PCMCIA
ltr	ecn no	dr	date	title
g				68P DOUBLE EJECTOR HEADER ASSY FOR TYPE I/II/II(UPPER DECK)
				dwg no
				92711
				sheet. 5 of 5
				size
				A4
				type
				Product Customer Drawing
sheet	revision			
index	sheet			