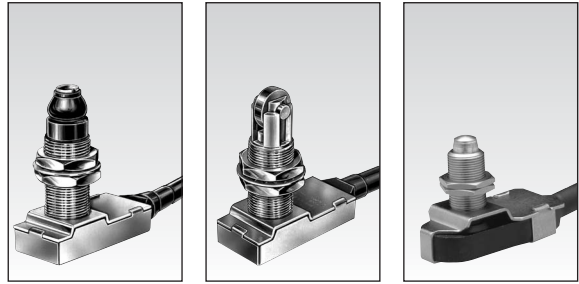


# Automotive Limit Switches Series 83 731/ 83 732 / 83 733



1

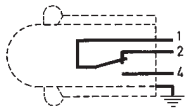
**Conform to the following standards :**  
IEC 356.1 - EN 60204.1  
NFC 20030 : Class I - 83 731 - 83 732  
Class III - 83 733

**Degree of protection :**  
IP 56 - IP 66 depending on type

**Version :** 1 pole

**Function :** 3-terminal single break two-way contact element (form C: inverter).

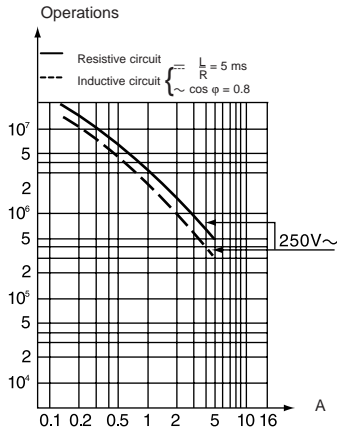
**Principle :**



**Electrical characteristics :**

Assigned operating current (Ie)  
83 731 - 83 732 : 5 A 250 V  
83 733 : 5 A 50 V  
Thermal rating (Ith) : 12 A

**Operating curve :**



**Connections :**

PVC cable (A05 - VV - F) 0.50 m long  
3 conductors cross-section 0.75 mm<sup>2</sup>  
Sheathed, ext. Ø : 7.6 mm  
Core connections : 1 : black (common)  
2 : brown (NC)  
4 : blue (NO)

**Electrical protection :**

Earthing terminal for version 83 731 and 83 732.

**Approvals :**

CSA A300.

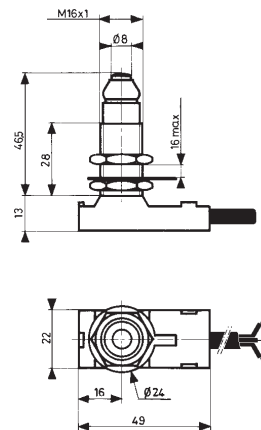
## Types

		83 731 3	83 732 3	83 733 3
<b>Control mechanisms</b>				
Top-mounted plunger		•		•
Top-mounted plunger with roller			•	
<b>Mechanical characteristics</b>				
Minimum operating force	N (oz.)	15 (53)	15 (53)	6 (21.2)
Minimum total travel force	N (oz.)	35 (123.4)	35 (123.4)	25 (88.2)
Minimum operating travel	mm (in.)	2 (.079)	2 (.079)	1.5 (.059)
Differential travel	mm (in.)	0.2 (.008)	0.2 (.008)	0.2 (.008)
Max. total travel	mm (in.)	6 (.236)	6 (.236)	4 (.157)
<b>Mechanical life</b>				
Operations		10 <sup>6</sup>	10 <sup>6</sup>	10 <sup>6</sup>
<b>Temperature limits</b>				
°C (°F)		- 5 + 70	- 5 + 70	- 5 + 70
<b>Degree of protection</b>				
°C (°F)		IP 66	IP 66	IP 56
<b>Weight</b>				
g (oz.)		110 (3.9)	110 (3.9)	70 (2.5)

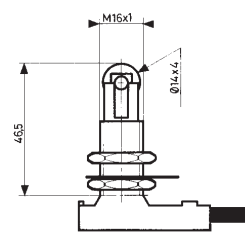
## Dimensions

mm

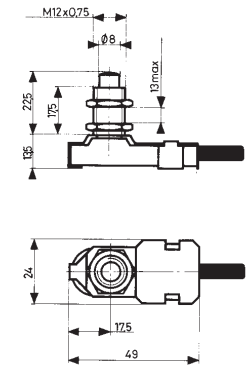
83 731 3



83 732 3



83 733 3



## Other information

For other versions, functions and special contacts or special modes of operation : please consult us.



## To order, specify :

1/2 meter cable	1 meter cable	2 meter cable
83731316	83731319	83731310
83732323	83732315	83732327
83733315	83733314	83733310

Standard products,  
non stocked

1 Type

Example : Limit switch - 83 731 319