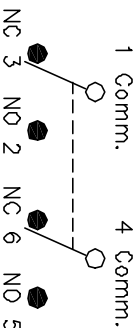
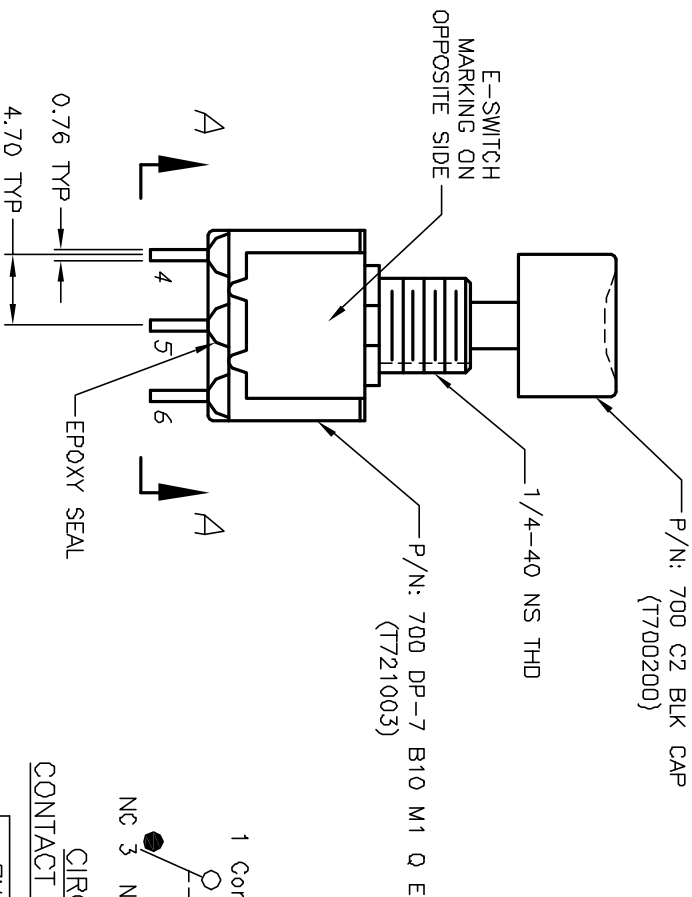
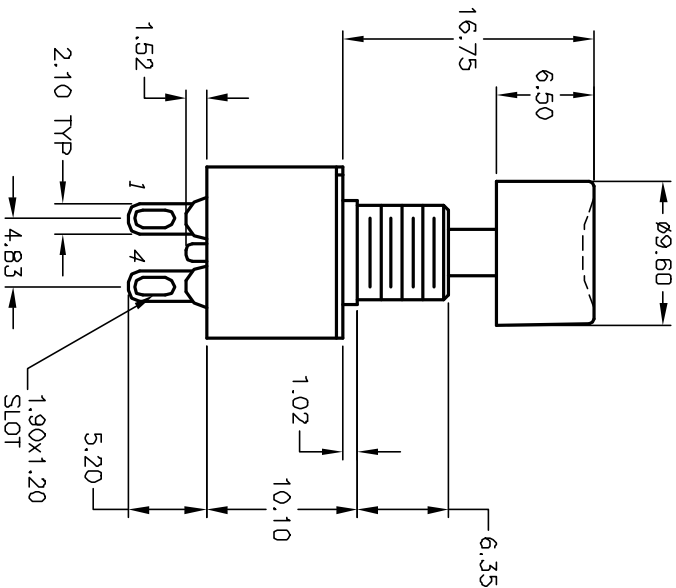


VIEW A-A

NOTES:

1. ALL DIMENSIONS IN MM
2. GENERAL TOLERANCE: 0.0=±0.4
0.00=±0.25
3. TERM. NOS. FOR REF. ONLY
4. RATING: 1A @120V AC or 28V DC.
5. ELECTRICAL LIFE: 50,000 make-and-break cycles at full load.
6. INSULATION RESISTANCE: 1,000 mega-ohm
7. DIELECTRIC STRENGTH: 1,000 V RMS @sea level
8. OPERATING TEMP.: -30°C to 85°C



CIRCUIT:DPDT
CONTACT CONFIGURATION

DN	<DN>
1-3,4-6	1-2,4-5

()=MENTARY

REV.	ECN NO.	DESCRIPTION	DATE	CHKD
A	10818	RELEASED FOR PRODUCTION	7/28/00	MM

TITLE	SCALE	DATE	DR	DWG	REV
700 DP-7 B10 M1 Q E/C2 BLK CAP	2:1	7/28/00	MM	X T00764	A

E-SWITCH®

THE INFORMATION CONTAINED IN THIS DOCUMENT IS PROPRIETARY TO E-SWITCH AND IS NOT TO BE COPIED OR TRANSMITTED