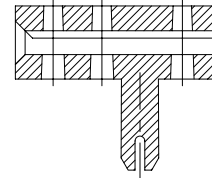
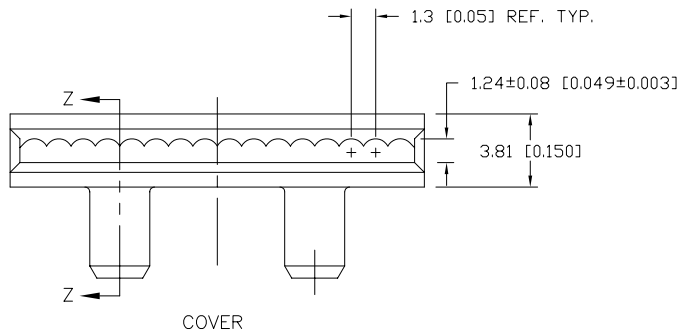
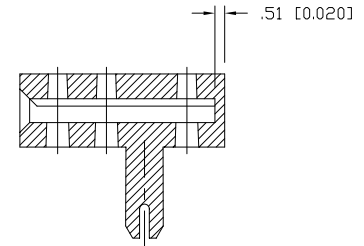


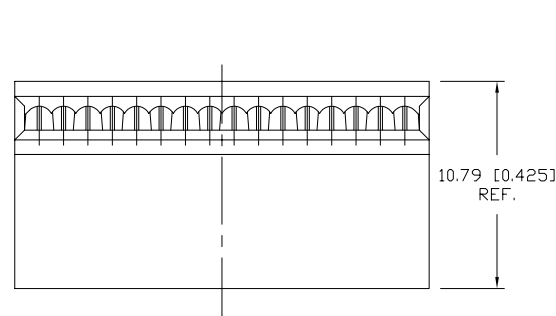
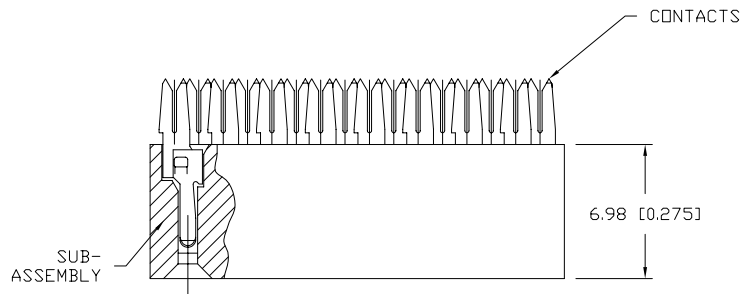
PRODUCT NUMBER
SEE TABLE



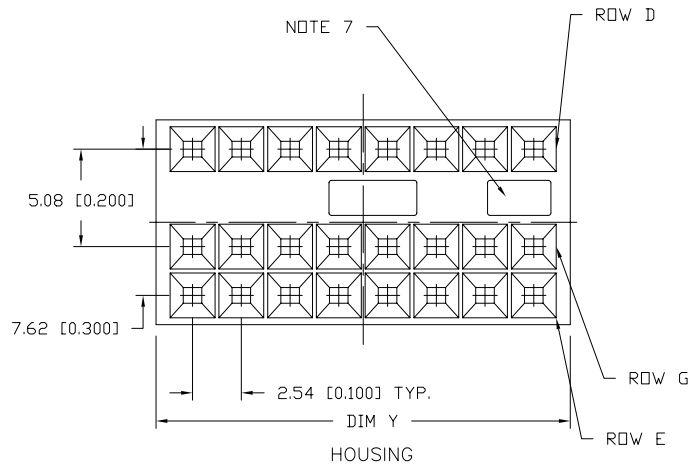
STYLE B
THRU SLOT
SECTION Z-Z



STYLE A
CLOSED
SECTION Z-Z



HOUSING AND COVER ASS'Y.



NOTE 7

mat'l. code		surface		tolerance		projection		product family	
-		ISO 1302 ✓		ISO 406 ISO 1101				QUICKIE	
ltr		date		tolerances unless otherwise specified		INCH/MM		title	
H	REDRAW	RDS	8/10/88	angles	linear			FINAL ASS'Y	
J	CHANGES	SAR	12/6/88	0°±2'		scale 1.5:1		QKE FEMALE I. C.	
K	v90137	RGD	3/30/99					dwg no	
L	N05-0080	MHT	7/27/05	dr	D. SHEAFFER	8/10/88		sheet 1 of 2 size	
M	M06-0223	ERE	06/12/06	engr	M. SMYK	8/10/88		65350	
				chr	M. SMYK	8/10/88		A3	
				appd	M. SMYK	8/10/88		type Product Customer Drawing	
sheet	revision	M	M						
index	sheet	1	2						



Copyright FCI

PRODUCT NUMBER NOTE 8	SIZE	LOADED ROWS	COVER STYLES	DIMENSION Y	SEE NOTE
65350-001	2 x 7	D AND E	A	19.05 [0.750]	2
-002	2 x 8	D AND E	A	21.59 [0.850]	2
-003	2 x 7	D AND G	A	19.05 [0.750]	2
-004	2 x 8	D AND G	A	21.59 [0.850]	2
-005	2 x 7	D AND E	B	19.05 [0.750]	2
-006	2 x 8	D AND E	B	21.59 [0.850]	2
-007	2 x 7	D AND G	B	19.05 [0.750]	2
-008	2 x 8	D AND G	B	21.59 [0.850]	2
-011	2 x 7	D AND G	A	19.05 [0.750]	6
-012	2 x 8	D AND G	A	21.59 [0.850]	6
-013	2 x 7	D AND E	B	19.05 [0.750]	6
-014	2 x 8	D AND E	B	21.59 [0.850]	6
-015	2 x 7	D AND G	B	19.05 [0.750]	6
-016	2 x 8	D AND G	B	21.59 [0.850]	6
-017	2 x 7	D AND E	A	19.05 [0.750]	6
65350-018	2 x 8	D AND E	A	21.59 [0.850]	6

NOTES:

- CONTACT MAT'L: FULL HARD PHOSPHOR BRONZE.
- ② TERMINAL PLATING: 1.27u/50u" MIN. Ni UNDERPLATE OVER ENTIRE TERMINAL AND .76u/30u" MIN. Au IN DISCONNECT AREA ONLY.
- COVER MAT'L: 30% GLASS FILLED POLYESTER. FLAME RETARDANT PER UL 94V-0. COLOR: BLUE
- SUB-ASS'Y HOUSING MAT'L: 30% GLASS FILLED POLYESTER. FLAME RETARDANT PER UL 94V-0. COLOR: BLUE.
- APPLICATION DWG. TA-172 ILLUSTRATES ASSEMBLY DETAILS.
- ⑥ TERMINAL PLATING: 1.27u/ 50u" MIN. Ni UNDERPLATE OVER ENTIRE TERMINAL AND 1.27u/50u" MIN. Au IN DISCONNECT AREA ONLY. COLOR BLUE P/N 16-508-002
- ⑦ THIS FEATURE ON 2 x 8 SIZE ONLY.
- ⑧ ADD "LF" SUFFIX AT THE END OF PART NUMBER FOR LEAD FREE OPTION.
- THIS PRODUCT MEETS EUROPEAN UNION DIRECTIVES AND OTHER COUNTRY REGULATION AS DESCRIBED IN GS-22-008.
- THE PRODUCT IS NOT INTENDED TO BE EXPOSED TO A MANUFACTURING SOLDER PROCESS.

mat'l. code		surface		tolerance		projection		product family	
-		ISO 1302 ✓		ISO 406 ISO 1101		⊕		QUICKIE	
ltr		ecn no dr		date		tolerances unless otherwise specified		title	
M						.XX±.01/.XX±.3 .XXX±.005/.XX±.13 .XXXX±.0020/.XXX±.051		INCH/MM scale 1.5:1	
				0'±2'				FINAL ASS'Y QKE FEMALE I. C.	
				dr		D. SHEAFFER		8/10/88	
				enr		M. SMYK		8/10/88	
				chr		M. SMYK		8/10/88	
				appd		M. SMYK		8/10/88	
sheet		revision						FCJ	
index		sheet						dwg no sheet 2 of 2 size 65350 A3	
								type Product Customer Drawing	