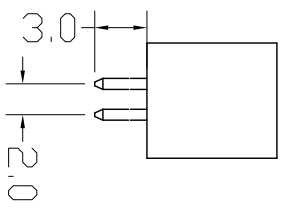
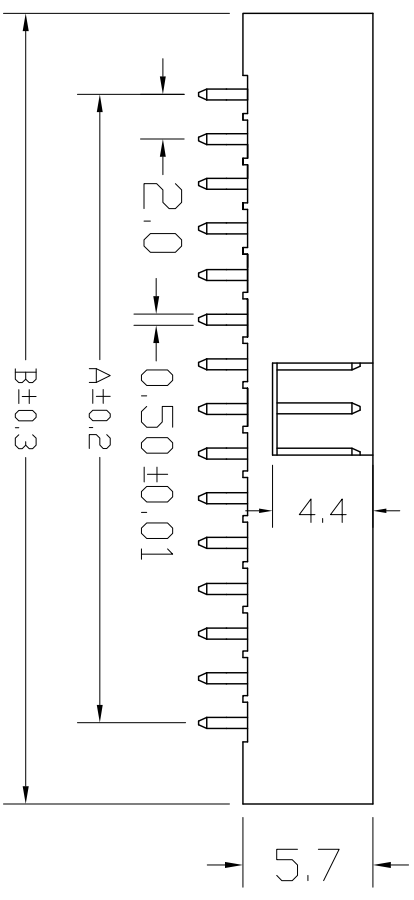
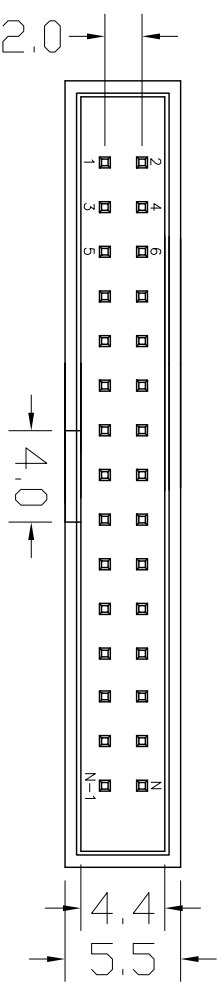


| REV. | DESCRIPTION | DATE       |
|------|-------------|------------|
| A    | RELEASE     | 2012.11.12 |

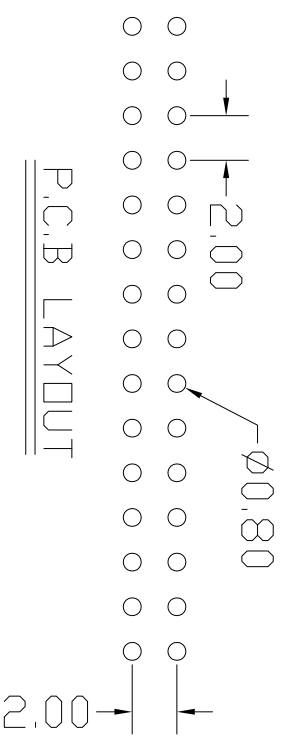
NOTES:  
 Insulator Material: Nylon-6T, UL 94V-0  
 Contact Plating: TIN, 80-100 $\mu$ "  
 Contact Material: Brass

Current Rating : 1A AC,DC  
 Contact Resistance: 20M $\Omega$  Max.  
 Dielectric Withstanding: AC 500V  
 Insulator Resistance: 1000M $\Omega$  Min.  
 Operating Temp.: -40°C~+105°C



| NUMBER OF POSITIONS | DIMENSIONS |       |
|---------------------|------------|-------|
|                     | A          | B     |
| 06                  | 4.00       | 13.30 |
| 08                  | 6.00       | 15.30 |
| 10                  | 8.00       | 17.30 |
| 12                  | 10.00      | 19.30 |
| 14                  | 12.00      | 21.30 |
| 16                  | 14.00      | 23.30 |
| 18                  | 16.00      | 25.20 |
| 20                  | 18.00      | 27.30 |
| 24                  | 22.00      | 31.30 |
| 26                  | 24.00      | 33.30 |
| 30                  | 28.00      | 37.30 |
| 34                  | 32.00      | 41.30 |
| 40                  | 38.00      | 47.30 |
| 44                  | 42.00      | 51.30 |
| 50                  | 48.00      | 57.30 |
| 60                  | 58.00      | 67.30 |
| 64                  | 62.00      | 71.30 |

**RoHS**



P.C.B LAYOUT

|                     |             |            |                 |
|---------------------|-------------|------------|-----------------|
| UNLESS TOLERANCE    |             | DRAW BY    |                 |
| GENERAL             | ANGLE       | DESIGN BY  |                 |
| X ± 0.30            | X° ± 3.0°   | CHECK BY   |                 |
| .X ± 0.20           | .X° ± 2.0°  | APPROVE BY |                 |
| .XX ± 0.15          | .XX° ± 1.0° |            |                 |
| .XXX ± 0.08         | .XXX ± 0.5° |            |                 |
| SCALE               | SHEET       | UNIT       | DRAW NO:        |
| 1:1                 | 1/1         | MM         | 3120-XX-0100-99 |
| <b>Cnc Tech,LLC</b> |             |            | REV: A          |
| Port NO.            |             |            |                 |
| 3120-XX-0100-99     |             |            |                 |

