

BNC Connectors, 50 Ohm (Continued)

Right-Angle PC Board/Panel Mount Jacks

Plating

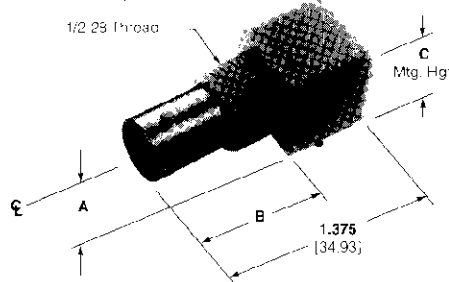
Body — Nickel

Center Contact — See chart

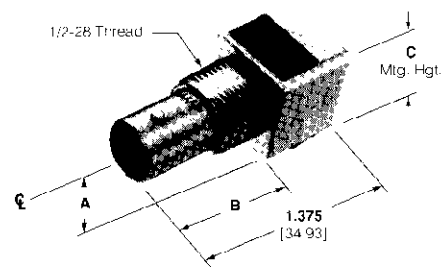
Dielectric — Polymethyl Pentene

Lockwasher and Jam Nut see page 35.

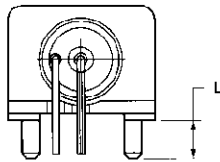
VALOX Body



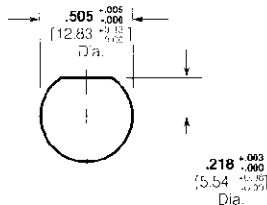
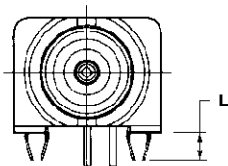
Metal Body



Mounting Post Style



Compliant Post



Maximum Panel Thickness: .240 [6.1]

Recommended Panel Cutout

Body Material	Center Contact Plating	Dimensions			Part Numbers				
		A	B	C	Without Mounting Posts	With Mounting Posts	L	With Compliant Posts	E
VALOX, White	Tin-Lead	.338 8.59	.835 21.21	.625 15.88	226990-1	227161-1	.137 3.48	—	—
	Gold1	.338 8.59	.835 21.21	.625 15.88	226990-3	227161-3	.137 3.48	—	—
	Gold1	.272 6.91	.835 21.21	.519 13.18	—	227161-7	.137 3.48	414684-1	.185 4.70
	Gold2	.272 6.91	.835 21.21	.519 13.18	—	1-227161-4	—	—	—
	Gold3	.272 6.91	.835 21.21	.519 13.18	—	415082-1	—	—	—
	Tin-Lead	.272 6.91	.835 21.21	.519 13.18	226990-7	—	—	—	—
VALOX, Black	Tin-Lead	.338 8.59	.835 21.21	.625 15.88	226990-2	227161-2	.137 3.48	—	—
	Gold1	.338 8.59	.835 21.21	.625 15.88	226990-6	227161-6	.137 3.48	—	—
	Gold1	.272 6.91	.835 21.21	.519 13.18	—	227161-9	.137 3.48	415218-1	.110 2.79
	Gold1	.243 6.17	.835 21.21	.460 11.68	—	415046-1	—	415046-2	—
Metal	Tin-Lead	.325 8.26	.820 20.83	.625 15.88	227433-1	227661-1	.137 3.48	—	—
	Gold1	.325 8.26	.820 20.83	.625 15.88	227676-1	227677-1	.137 3.48	222785-1	.153 3.89
	Gold1	.272 6.91	.820 20.83	.500 12.70	—	413879-1	.137 3.48	—	—
	Gold2	.272 6.91	.820 20.83	.500 12.70	—	413879-2	.137 3.48	—	—
High Temp. Housing	Gold1	.272 6.91	.835 21.21	.519 13.18	—	1-227161-3*	—	—	—

Plating:

Gold1 — .000030 [0.00076] thick

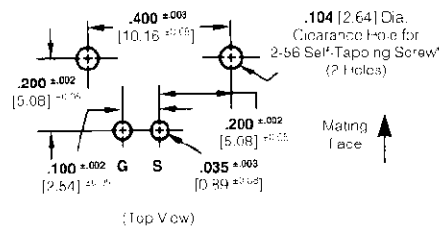
Gold2 — .000050 [0.00127] thick

Gold3 — .000003 [0.00008] thick

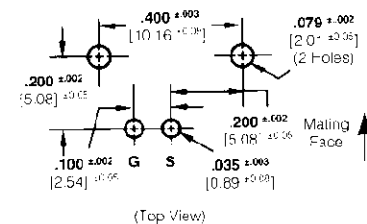
Note: If an Insulating Bushing is required see part number 330620 and Panel Cutout on page 30.

*IR reflw compatible

Without Mounting Posts



With Mounting Posts



* Screw for panel thickness of 3/32 [2.38] or greater
Part No. 221108-2.
Screw for panel thickness of less than 3/32 [2.38]
Part No. 221108-4.

Recommended PC Board Layouts