



## 174HC1700K2CM6

Conduction Cooled (High Density Resonant)

Parts are RoHS compliant

Parts are RoHS compliant

### ELECTRICAL SPECIFICATIONS

Capacitance: 0.17  $\mu$ F

AC Current: 250 A

ESR: 1.2 milliOhms at 100 kHz and 20°C

Self Inductance: 3 Nanohenries maximum

Tolerance: -10 %, +10 %

Temperature Range: -40°C to +85°C

Maximum Core Temperature: 85°C

Resonant Frequency: 286-389 kHz

Maximum power (KVAR): 150

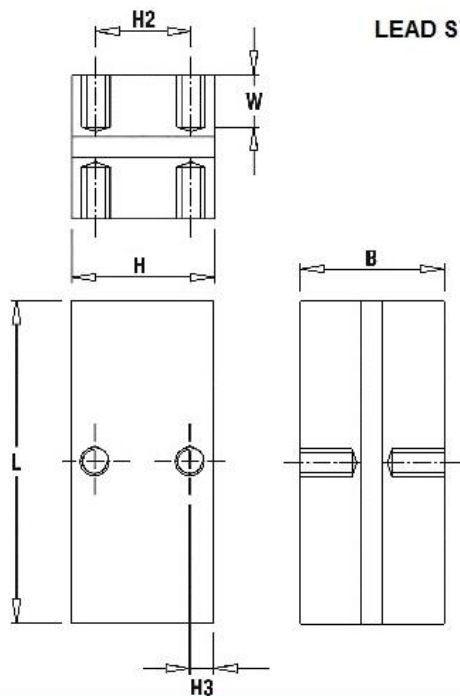
VAC: 700 Volts AC

### PHYSICAL DIMENSIONS

Length (L): 68 mm, 0.5 mm

Height (H): 30 mm, +/-0.5 mm

Thickness (B): 30.2 mm, +/-0.1 mm



LEAD STYLE: 2CM6

| L  | H            | B              | W  | H2 | H3 |
|--|--------------|----------------|----|----|----|
| 68 $\pm$ 0.5                                     | 30 $\pm$ 0.5 | 30.2 $\pm$ 0.1 | 10 | 20 | 5  |
| Mounting holes: M6x1 tap filled with SS helicoil |              |                |    |    |    |
| Tightening torque: 15Nm MAX                      |              |                |    |    |    |



3757 W. Touhy Ave. Lincolnwood, IL 60712 (847) 675-1760 FAX (847) 673-2850  
 Illinois Capacitor (HK) Ltd., Tel: 85227930931, Fax: 85227930731, [www.ilcap.com.hk](http://www.ilcap.com.hk)  
 © Copyright 2017 Illinois Capacitor. A division of Cornell Dubilier. All Rights Reserved