

Panel feed-through - SACC-DSIV-MS-5CON-L180 SCO THR - 1551752

Please be informed that the data shown in this PDF Document is generated from our Online Catalog. Please find the complete data in the user's documentation. Our General Terms of Use for Downloads are valid (<http://download.phoenixcontact.com>)



Sensor/actuator flush-type plug, 5-pos., M12 SPEEDCON, A-coded, rear/screw mounting with M12 thread, with straight THR solder connection



Key commercial data

Packing unit	1 1
Minimum order quantity	60 1
Weight per Piece (excluding packing)	9.57 GRM
Custom tariff number	85366990
Country of origin	Germany

Technical data

Ambient conditions

Ambient temperature (operation)	-25 °C ... 85 °C (Plug)
Degree of protection	IP67

General

Rated current at 40°C	4 A
Rated voltage	60 V
Number of positions	5
Contact resistance	≤ 3 mΩ
Insulation resistance	≥ 100 MΩ
Coding	A - standard
Status display	No
Surge voltage category	II
Pollution degree	3
Connection method	THR solder connection
Mounting type	Rear mounting M12 x 1 With flat nut

Panel feed-through - SACC-DSIV-MS-5CON-L180 SCO THR - 1551752

Technical data

Material

Inflammability class according to UL 94	V0
Contact material	CuZn
Contact surface material	Au
Contact carrier material	PPA
Material, knurls	Zinc die-cast, nickel-plated
Sealing material	FKM / EPDM

Classifications

eCl@ss

eCl@ss 4.0	27250313
eCl@ss 4.1	27250313
eCl@ss 5.0	27143423
eCl@ss 5.1	27143423
eCl@ss 6.0	27143423
eCl@ss 7.0	27449001
eCl@ss 8.0	27449001

ETIM

ETIM 3.0	EC002061
ETIM 4.0	EC002062
ETIM 5.0	EC002062

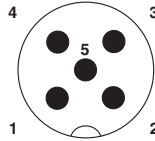
UNSPSC

UNSPSC 6.01	31251501
UNSPSC 7.0901	31251501
UNSPSC 11	31251501
UNSPSC 12.01	31251501
UNSPSC 13.2	31251501

Drawings

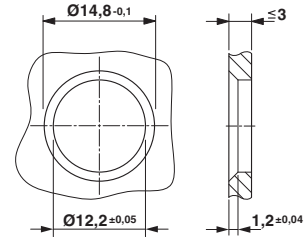
Panel feed-through - SACC-DSIV-MS-5CON-L180 SCO THR - 1551752

Schematic diagram



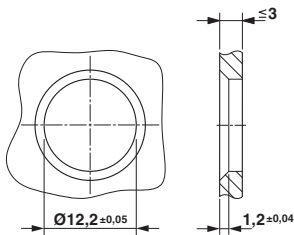
Pin assignment M12 male connector, 5-pos., A-coded, male side

Dimensioned drawing



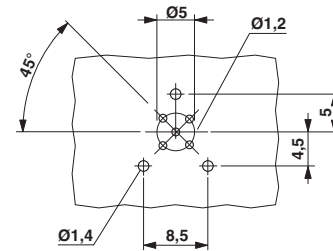
Housing cut-out for two-part M12 flush-type connectors with THR and wave soldering connection, version 1

Dimensioned drawing

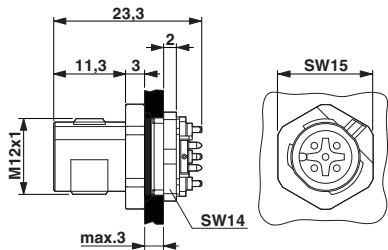


Housing cut-out for two-part M12 flush-type connectors with THR and wave soldering connection, version 2

Drilling diagram

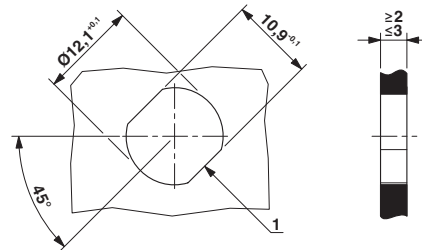


Dimensioned drawing



M12 flush-type plug

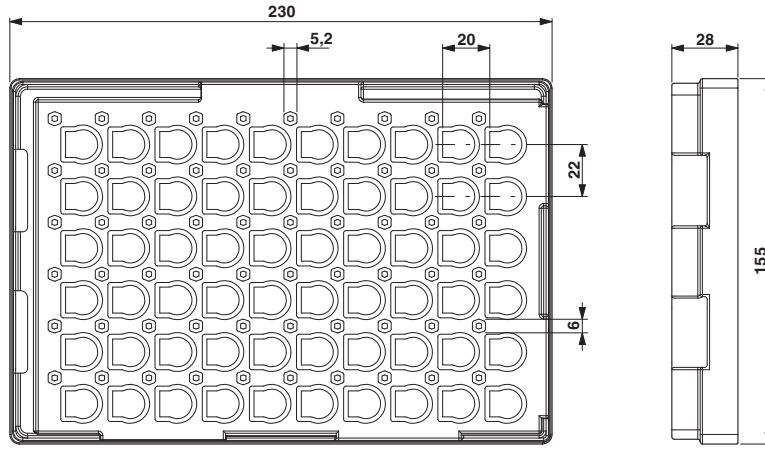
Dimensioned drawing



Housing cutout for M12 fastening thread, mounting panel with feed-through hole (alternative with surface as protection against rotation)

Panel feed-through - SACC-DSIV-MS-5CON-L180 SCO THR - 1551752

Dimensioned drawing



THR tray packaging