

INTRODUCTIONS

1. Power module incorporates an IEC connector, single or double-fuse (IEC 5x20mm) holder, optional voltage selector switch and double-pole power switch, plus an EMI filter all-in-one easy-to-install unit.
2. Adapts to 100-120V or 200-240V input voltage by simply reversing the fuse cartridge.
3. All part numbers are UL recognized, CSA certified and VDE approved.
4. Switch electrical lifetime: 10,000 cycles.
Maximum inrush current: 70A.

SPECIFICATIONS

1. Maximum leakage current each
line-to-ground @ 115VAC 60Hz: 0.25mA
0.4mA (4700pF)
@ 250VAC 50Hz: 0.45mA
0.8mA(4700pF)
2. Hipot rating (one minute)
line-to-ground: 2250VDC
line-to-line: 1450VDC
3. Operating frequency: 50/60Hz
4. Rated voltage: 115/250VAC

COMPONENTS

PART NO.	L (mH)	C1 (uF)	C2 (uF)	Cy (pF)	UL	SP	VDE
03EK3/A	8	0.22	0.1	3300	✓	✓	✓
03EK3B/S	2.3	0.22	0.1	4700	✓		✓
03EK3L/S	13.77	0.47	0.22	4700			✓
03EK3S/A	8	0.22	0.1	3300	✓	✓	✓
06EK3/A	2.5						
06EK3S/A							
10EK3/A							
10EK3S/A	1.6						

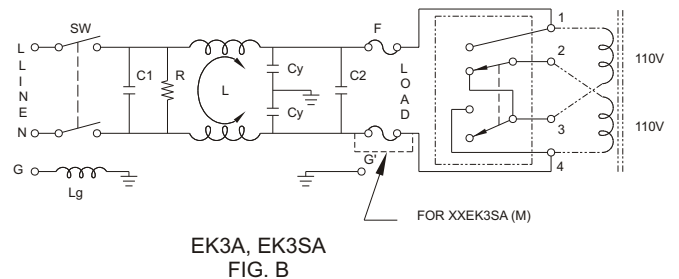
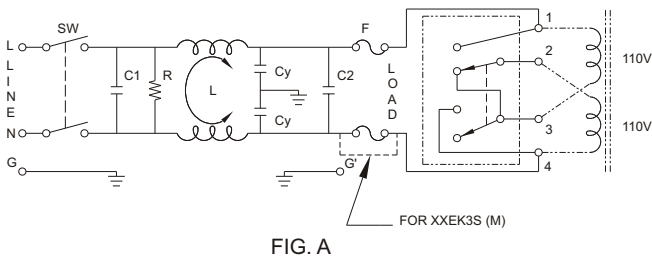
R: 1MΩ
Lg: 400uH (EK3A, EK3SA only)

TYPE & FEATURE

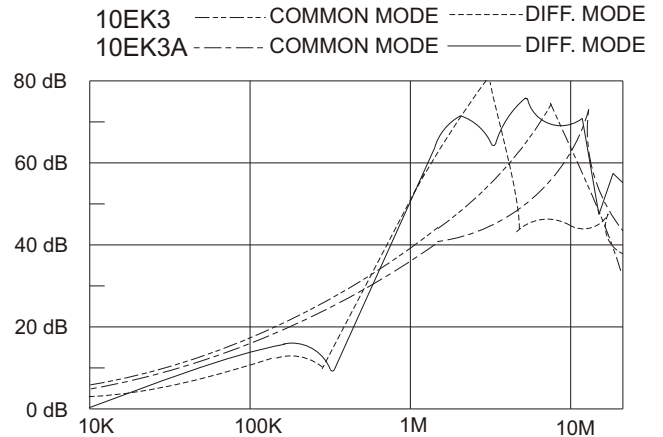
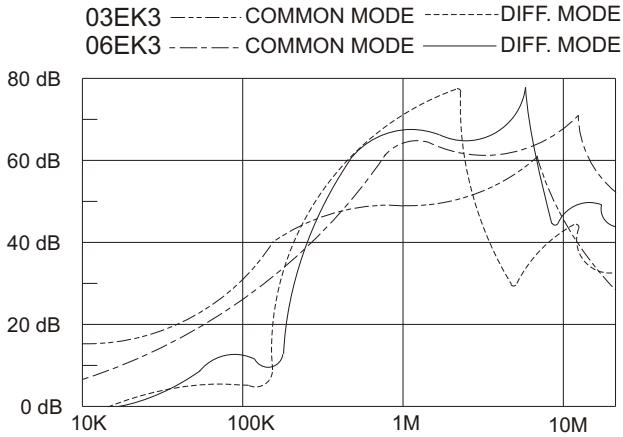
DELTA PART NO.	03EK3 03EK3B 03EK3L 06EK3 10EK3	03EK3A 06EK3A 10EK3A	03EK3S 03EK3BS 03EK3LS 06EK3S 10EK3S	03EK3SA 06EK3SA 10EK3SA
• FUSE	DOUBLE	DOUBLE	SINGLE	SINGLE
IEC CONNECTOR	△	△	△	△
•• DOUBLE POLE POWER SWITCH	△	△	△	△
VOLTAGE SELECTOR SW	△	△	△	△
ELECTRICAL SCHEMATIC	FIG.A	FIG.B	FIG.A	FIG.B

- UL, CSA & VDE approved current rating:
UL-10A both at 125VAC & 250VAC; CSA & VDE-6A at 250VAC.
- UL, CSA & VDE approved current rating:
UL & CSA-10A both at 125VAC & 250VAC; VDE-10A at 250VAC.

ELECTRICAL SCHEMATIC



INSERTION LOSS (TYPICAL)



MINIMUM INSERTION LOSS IN dB

COMMON MODE (L-G) IN 50 OHM SYSTEM		FREQUENCY-MHz				
CURRENT RATING	.15	.50	1.0	5.0	10	30
3A	32	38	38	38	38	25
6A	20	30	35	40	40	30
• 10A	15	25	30	40	40	30
3A (A,SA)	30	40	40	40	45	25
6A (A,SA)	20	30	35	40	40	30
• 10A (A,SA)	20	25	30	45	45	30

DIFFERENTIAL MODE (L-L) IN 50 OHM SYSTEM						
3A	20	50	55	40	40	30
6A	5	40	50	40	40	40
• 10A	3	35	45	40	40	30
3A (A,SA)	20	50	50	50	45	30
6A (A,SA)	5	40	50	40	40	40
• 10A (A,SA)	3	35	45	45	40	30

• CSA approved 6A at 125/250 VAC; VDE-6A/250VAC

MECHANICAL CONSTRUCTION

