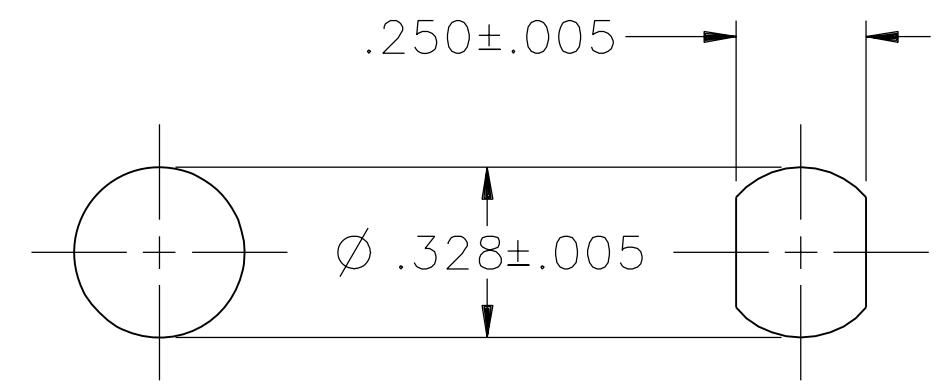
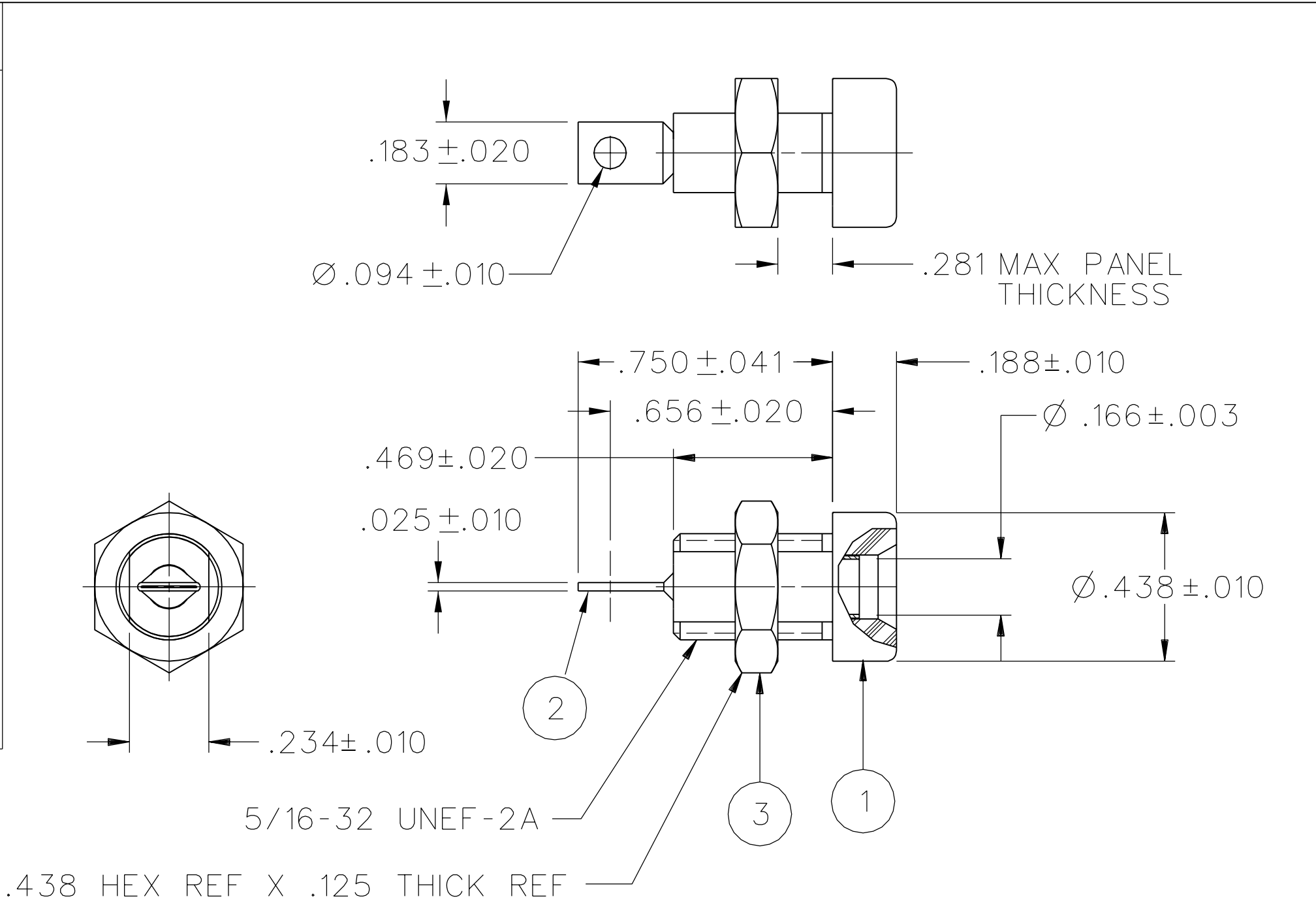


PART NUMBER	ITEM ①		ITEM ②	ITEM ③
	BODY	COLOR		
108-0901-001	NYLON	WHITE	BRASS TIN PL .0001 MIN OVER NICKEL PL .00005 MIN	BRASS NICKEL PL .0001 MIN
108-0902-001		RED		
108-0903-001		BLACK		
108-0904-001		GREEN		
108-0905-001				
108-0906-001		ORANGE		
108-0907-001		YELLOW		
108-0908-001		BROWN		
108-0909-001				
108-0910-001		BLUE		
108-0911-001				
108-0912-001		VIOLET		
108-0913-001		GRAY		
108-0914-001				
108-0915-001				
108-0916-001				
108-0917-001				
108-0918-001				
108-0919-001				
108-0920-001				



MOUNTING HOLE OPTIONS

NOTES:  
SPECIFICATIONS:  
ELECTRICAL:  
CURRENT RATING: 15 AMPS DC MINIMUM  
DIELECTRIC WITHSTANDING VOLTAGE: 7000 VRMS MINIMUM AT SEA LEVEL  
RECOMMENDED WORKING VOLTAGE: 3500 VRMS MAXIMUM AT SEA LEVEL  
INSULATION RESISTANCE: 5000 MEGOHMS MINIMUM  
CONTACT RESISTANCE: 10 MILLIOHMS MAXIMUM  
CAPACITANCE: 2.4 pF NOMINAL  
MECHANICAL:  
CONTACT RETENTION IN INSULATOR FORCE: 30 LBS MINIMUM  
CONTACT RETENTION IN INSULATOR TORQUE: 2 IN OZ MINIMUM  
INSULATOR RETENTION IN .062 PANEL FORCE: NOT APPLICABLE  
INSULATOR RETENTION IN .062 PANEL TORQUE: NOT APPLICABLE  
PLASTIC MOUNTING THREAD STRIPPING TORQUE: 6 IN LB MINIMUM  
WIRE ACCEPTABILITY: 12 AWG OR SMALLER  
WIRE ATTACHMENT: SOLDER  
MATING BANANA PLUG SPRING WIDTH: .175 NOMINAL  
DURABILITY: 1000 CYCLES MINIMUM  
ENVIRONMENTAL:  
(MEETS OR EXCEEDS THE APPLICABLE PARAGRAPH OF MIL-PRF-39024)  
OPERATING TEMPERATURE: -55 DEG C TO 85 DEG C  
TEMPERATURE RISE AT RATED CURRENT: 10 DEG C MAXIMUM  
CORROSION: MIL-STD-1344, METHOD 1001, CONDITION B  
SHOCK: MIL-STD-1344, METHOD 2004, CONDITION G  
VIBRATION: MIL-STD-1344, METHOD 2005, CONDITION I  
HUMIDITY: MIL-STD-1344, METHOD 1002, CONDITION B

DRAWING NO.  
B - 108-0901/0920-001  
0 REVISIONS  
REVISED AND REDRAWN. DRAWING WAS "C" SIZE 108-0901/0920-001/020 DATED 3-30-88. SPLIT INTO 6 SEPERATE DWGS. CREATED SHEET 2.  
26a 1-9-03 R H R J B 10-1-03 ECN 48696

CUSTOMER DRAWING  
THIS DRAWING TO BE INTERPRETED PER ASME Y 14.5M - 1994  
"μSTATION"  
COMPANY CONFIDENTIAL

TOLERANCE UNLESS OTHERWISE SPECIFIED		DRAWN BY	DATE
DECIMALS	mm	RJB	12-27-02
.XX	_____	CHECKED BY	DATE
.XXX	_____		
MATL	_____	APPROVED BY	DATE
		RJB	10-1-03
FINISH	_____	RELEASE DATE	10-1-03
		U/M INCH	SCALE 2:1

Cinch Connectivity Solutions  
P.O. Box 1732  
Waseca, MN 56093  
1-800-247-8256

TITLE  
ASSEMBLY, BANANA JACK, INSULATED THREADED PANEL MOUNT, SOLDER TERMINAL

SHEET 2 OF 2  
DRAWING NO. B - 108-0901/0920-001