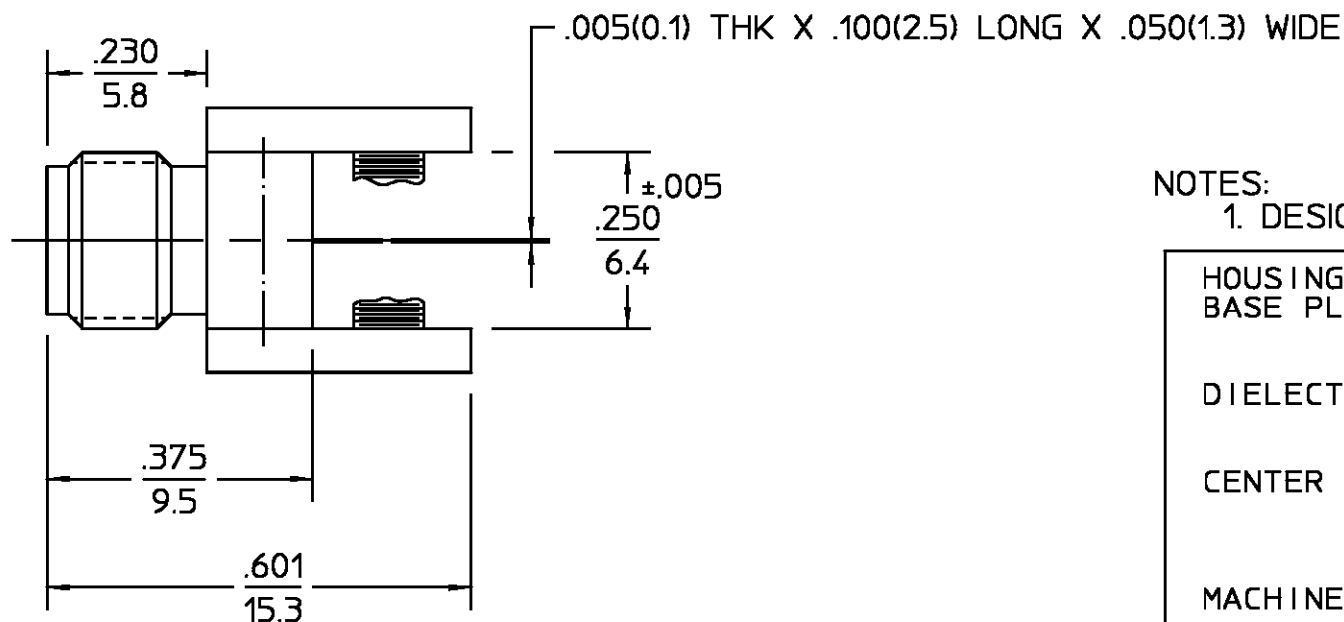
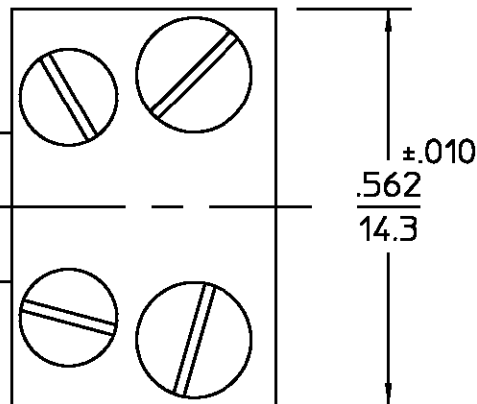
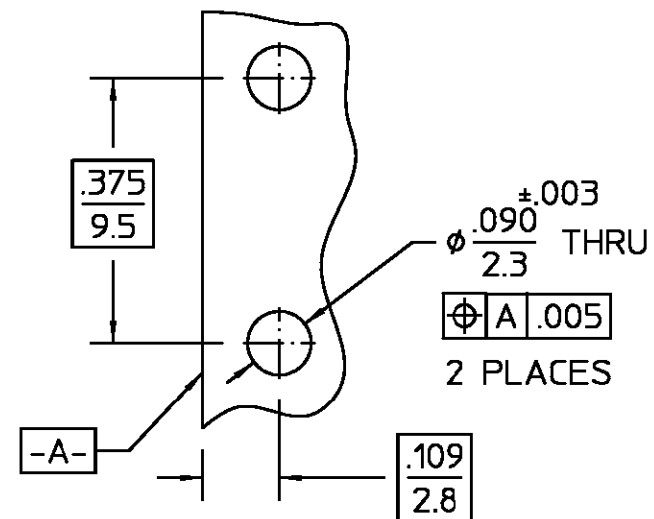


.250-36 UNS-2A

OSM JACK



REVISIONS			
REV	DESCRIPTION	DATE	APPROVED
03 ₂	REVISED	8/14/75	[Signature]



MOUNTING HOLE PATTERN

NOTES:

1. DESIGNED FOR USE WITH 1/4" THICK STRIPLINE

.XXX = in
XX.X = mm (REF)

COMPONENT	MATERIAL	FINISH
HOUSING BASE PLATES	STAINLESS STEEL PER ASTM-A484 AND ASTM- A582, TYPE 303	PASSIVATE PER QQ-P-35
DIELECTRIC	TFE FLUOROCARBON PER ASTM-D-1457	N/A
CENTER CONTACT	BERYLLIUM COPPER PER ASTM-B-196 OR ASTM-B-197, ALLOY C17300, CONDITION H	GOLD PLATE PER MIL-G-45204
MACHINE SCREWS	CORROSION RESISTANT STEEL PER QQ-S-763	PASSIVATE PER QQ-P-35

UNLESS OTHERWISE SPECIFIED DIMENSIONS ARE IN MILLIMETERS TOLERANCE ON FRAC. DEC. ANGLES ± 1/64 ±.25 ± 1°	DRAWN BY RFF	DATE 8/14/75	AMP AMP Incorporated 140 Fourth Avenue Waltham, MA 02451-7599	
	CHECKED BY BWC	8/14/75		
	APPD BY BWC	8/14/75		
These drawings and specifications are the property of M/A-COM Incorporated and shall not be reproduced or copied or used in whole or in part as the basis for the manufacture or sale of item(s) without written permission.	USE ASS'Y PROCEDURE	TITLE OSM STRAIGHT END LAUNCH JACK		REV 03 ₂
	NO. AP. N/A	SIZE B	CODE IDENT NO. 26805	2070-5069-02
		SCALE 4 : 1	SHEET 1 OF 1	