

PRODUCT NUMBER  
10120411-YXXXLF

RoHS COMPATIBLE, SEE NOTE 4

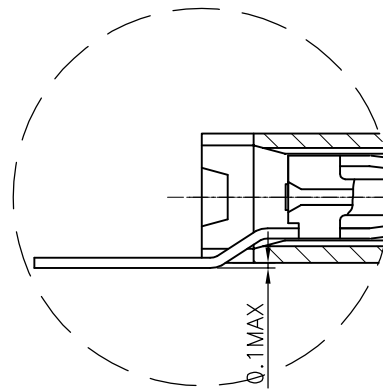
PACKAGING, SEE NOTE 3

NBR OF POS	DIM "A"	DIM "B"
02	5.00	2.54
03	7.54	5.08
04	10.08	7.62
05	12.62	10.16

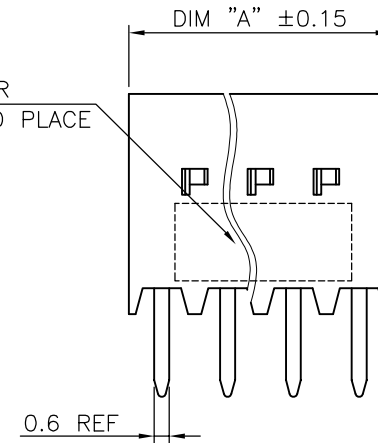
3= 0.76µm GOLD ON CONTACT AREA.  
2.0µm MIN MATTE TIN ON TAIL.

4= 2.0µm MIN MATTE TIN FULL PLATED

1.27µm Ni MIN UNDERPLATING



AREA FOR  
PICK AND PLACE



NOTES:

1 - HOUSING: HIGH TEMPERATURE THERMOPLASTIC GLASS FILLED  
FLAME RETARDANT PER UL 94 V-0, GREY COLOUR.

2 - TERMINAL MATERIAL: PHOSPHOR BRONZE.

3 - PACKAGING :  
K = TAPE & REEL PACKAGING  
T = TUBE PACKAGING

4 - RoHS COMPATIBLE PRODUCT SPECIFICATIONS

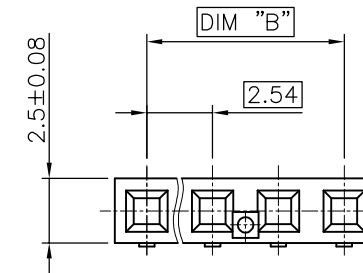
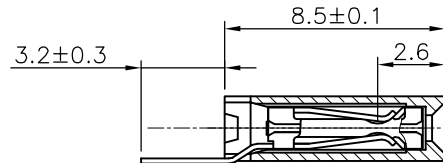
a - PLATING:

- "LF" MEANS THE PRODUCT IS LEAD-FREE,  
2µm MINIMUM MATTE TIN OVER 1.27µm  
MINIMUM NICKEL UNDERPLATE.

b - MANUFACTURING PROCESS COMPATIBILITY

- THE HOUSING WILL WITHSTAND EXPOSURE TO  
260°C PEAK TEMPERATURE FOR 30 SECONDS  
MAX IN A CONVECTION, INFRA-RED OR VAPOR  
PHASE OR REFLOW OVEN.

c - LEGAL STATEMENT: SEE GS-47-0004



mat'l. code SEE NOTES		surface ISO 1302	tolerance ISO 406 ISO 1101	projection mm	product family DUBOX
ltr	ecn no	dr	date	tolerances unless otherwise specified	title
A	F12-0003	LMU	12.04.18	linear	RECEPTACLE SM HORIZONTAL
B	F12-0074	JCO	12.06.19		scale 5/1
C	B-19114	LMU	14.10.21		dwg no
D	B-19327	LMU	14.11.06	dr L.MULIN 12.03.06	sheet 1 of 1 size
E	B-19926	BVE	15.01.08	engr J.COMPAGNON 12.04.18	10120411 A3
				chr	type CUSTOMER Drawing
				appd JCO 12.04.18	
sheet	revision				
index	sheet				