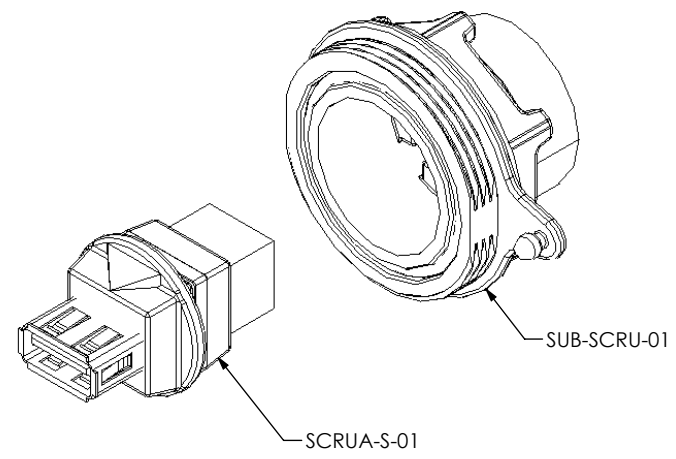
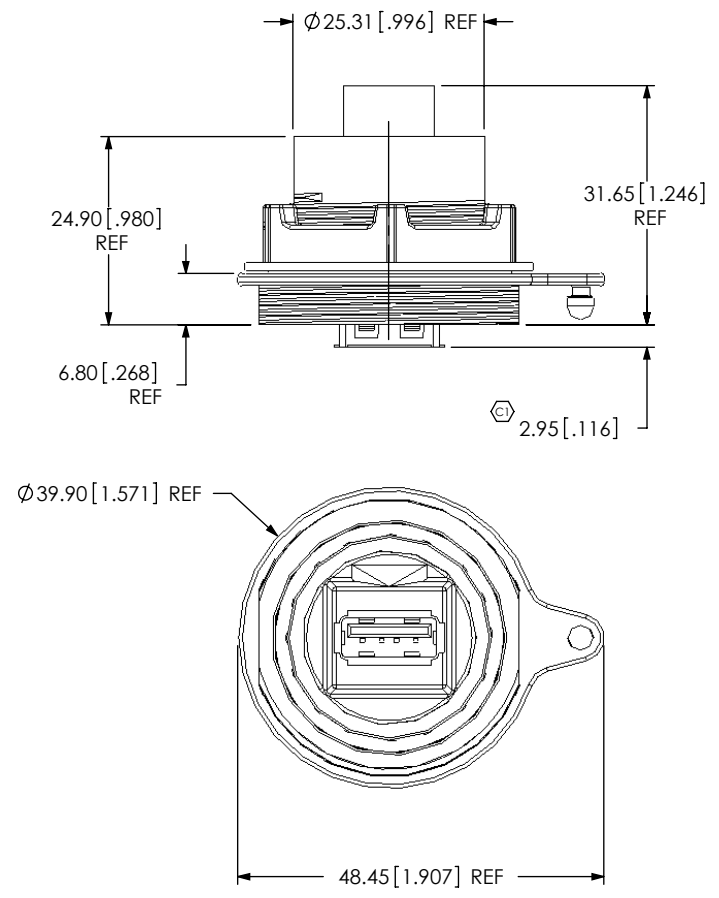


DO NOT SCALE FROM THIS PRINT

DESIGNED & DIMENSIONED IN MILLIMETERS [INCHES]

SCRU-XX

STYLE  
 -01: USE SCRUA-S-01 (SEE FIG. 1, SHT 1)  
 -02: USE SCRUA-S-02 (SEE FIG. 2, SHT 2)



RECOMMENDED PANEL HOLE FOR -01 & -02 STYLES (SEE NOTE 3)

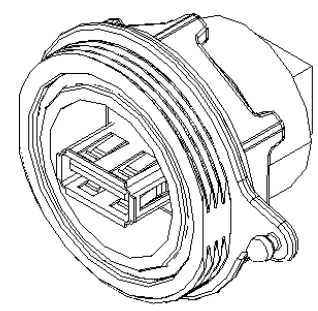
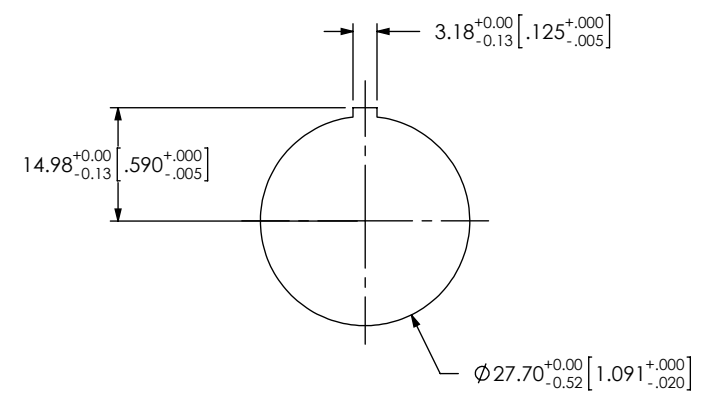



FIG. 1 (SCRU-01 SHOWN)

- NOTES:
1.  $\text{Ⓢ}$  REPRESENTS A CRITICAL DIMENSION.
  2. ASSEMBLY TO MEET UL 94V-0.
  3. PANEL THICKNESS:  $0.8 [ .03 ] - 5.2 [ .205 ]$ .
  4. PARTS TO BE PACKAGED IN TRAYS.

F:\DWG\MISC\MKTG\SCRU-XX-MKT.SLDRW

|   |   |  |
|---|---|--|
| <p>UNLESS OTHERWISE SPECIFIED, DIMENSIONS ARE IN MILLIMETERS. TOLERANCES ARE:</p> <p>DECIMALS      ANGLES</p> <p>.X: <math>\pm 0.3 [ .01 ]</math>      2°</p> <p>.XX: <math>\pm 0.13 [ .005 ]</math></p> <p>.XXX: <math>\pm 0.051 [ .0020 ]</math></p>  | <p>PROPRIETARY NOTE</p> <p>THIS DOCUMENT CONTAINS INFORMATION CONFIDENTIAL AND PROPRIETARY TO SAMTEC, INC. AND SHALL NOT BE REPRODUCED OR TRANSFERRED TO OTHER DOCUMENTS OR DISCLOSED TO OTHERS OR USED FOR ANY PURPOSE OTHER THAN THAT WHICH IT WAS OBTAINED WITHOUT THE EXPRESSED WRITTEN CONSENT OF SAMTEC, INC.</p> |  <p>520 PARK EAST BLVD, NEW ALBANY, IN 47150<br/>         PHONE: 812-944-6733      FAX: 812-948-5047<br/>         e-Mail: info@SAMTEC.com      code 55322</p> |
| <p>MATERIAL:      DO NOT SCALE DRAWING      SHEET SCALE: 1:1</p> <p>OR-17-01: SILICONE<br/>         PMB-17-01: PA66<br/>         SPG-17-01: SILICONE<br/>         SPN-17-01: PA66<br/>         SCRUA-XX INSULATOR: PBT<br/>         SCRUA-XX CONTACTS: PHOS BRONZE<br/>         SCRUA-XX SHIELDS: PHOS BRONZE<br/>         SCRUA-XX OVERMOLD: PBT</p> |   | <p>DESCRIPTION:<br/>         USB PANEL MOUNT ASSEMBLY</p> <p>DWG. NO.<br/> <b>SCRU-XX</b></p> <p>BY: CHAD F      12/13/2004      SHEET 1 OF 2</p>  |

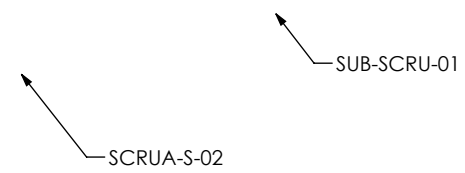
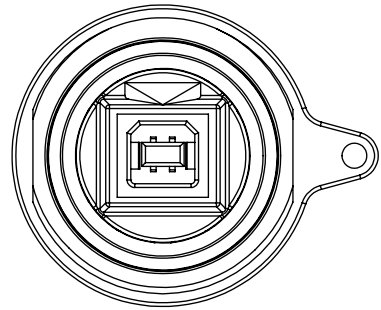
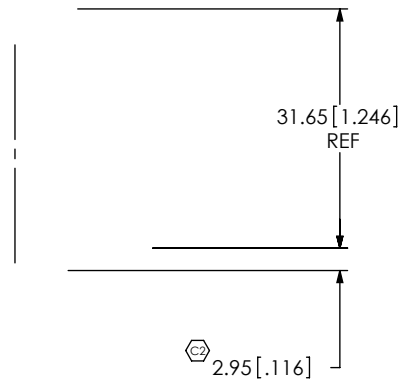


FIG. 2  
(SCRU-02 SHOWN)  
(SAME AS FIG. 1, UNLESS OTHERWISE STATED)

**samtec**