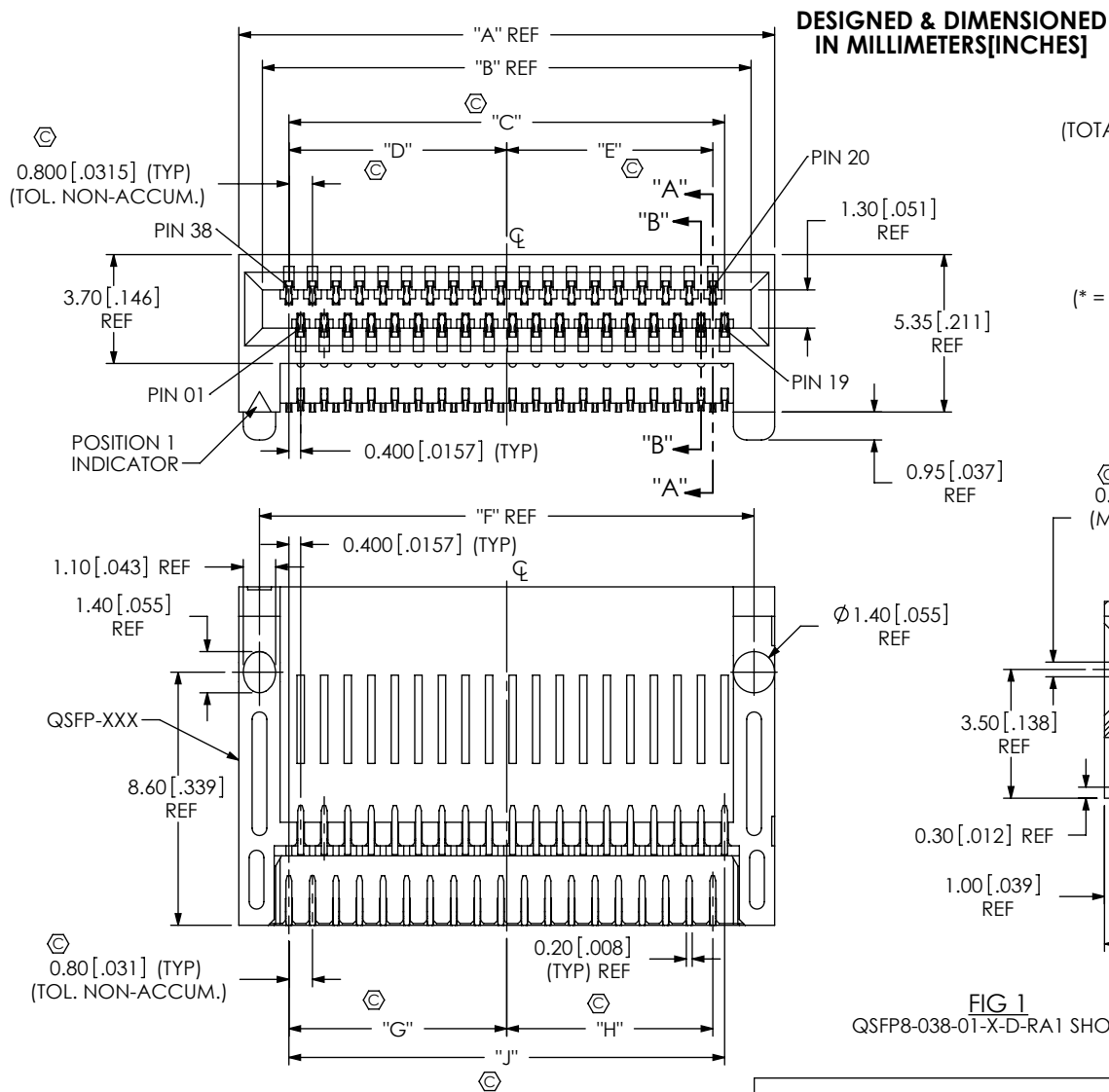


DO NOT SCALE FROM THIS PRINT



QSFP8-XXX-01-X-D-RA1-XX

NO OF POSITIONS  
\*-.020, -.038, \*.100  
(TOTAL NUMBER OF POSITIONS)

LEAD STYLE  
-01

PLATING SPECIFICATION  
-L: 10U" MIN AU/50U"Ni IN CONTACT, TIN ON TAIL

OPTIONS  
-TR: TAPE & REEL (LEAVE BLANK FOR TUBE PACKAGING)

SMT TYPE  
-RA1: RIGHT ANGLE

ROW SPECIFICATION  
-D: DOUBLE ROW

(\* = NOT TOOLED)

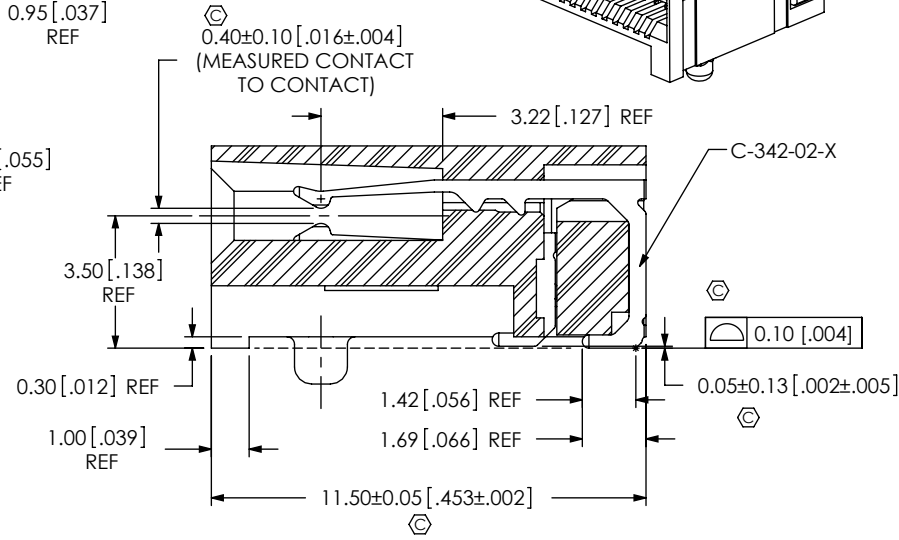
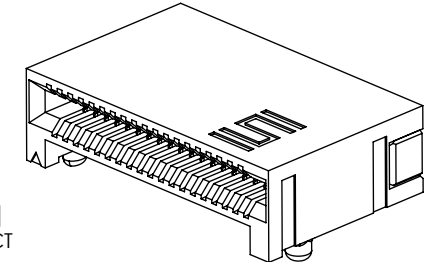


FIG 1  
QSFP8-038-01-X-D-RA1 SHOWN

SECTION "A"-"A"  
SCALE 5:1

**TABLE 2**

No. OF POS	"G"	"H"	"J"
*-020	3.80 [0.150]	3.40 [0.134]	7.60 [0.299]
-038	7.40 [0.291]	7.00 [0.276]	14.80 [0.583]
*-100	19.80 [0.780]	19.40 [0.764]	39.60 [1.559]

(\* = NOT TOOLED)

**TABLE 1**

No. OF POS	"A"	"B"	"C"	"D"	"E"	"F"
*-020	11.00 [0.433]	9.40 [0.370]	7.60 [0.299]	3.80 [0.150]	3.40 [0.134]	9.60 [0.378]
-038	18.20 [0.717]	16.60 [0.654]	14.80 [0.583]	7.40 [0.291]	7.00 [0.276]	16.80 [0.661]
*-100	43.00 [1.693]	41.40 [1.630]	39.60 [1.559]	19.80 [0.780]	19.40 [0.764]	41.60 [1.638]

(\* = NOT TOOLED)

NOTES:

1. Ⓢ REPRESENTS A CRITICAL DIMENSION.
2. MINIMUM PUSHOUT FORCE: 1.11N[0.25 LB].
3. NOTE DELETED.

UNLESS OTHERWISE SPECIFIED, DIMENSIONS ARE IN MILLIMETERS. TOLERANCES ARE:  
DECIMALS ANGLES  
X.X: ±0.3 [.01] 2°  
X.XX: ±0.13 [.005]  
X.XXX: ±0.051 [.0020]

PROPRIETARY NOTE  
THIS DOCUMENT CONTAINS CONFIDENTIAL AND PROPRIETARY INFORMATION AND ALL DESIGN, MANUFACTURING, REPRODUCTION, USE, PATENT RIGHTS AND SALES RIGHTS ARE EXPRESSLY RESERVED BY SAMTEC, INC. THIS DOCUMENT SHALL NOT BE DISCLOSED, IN WHOLE OR PART, TO ANY UNAUTHORIZED PERSON OR ENTITY NOR REPRODUCED, TRANSFERRED OR INCORPORATED IN ANY OTHER PROJECT IN ANY MANNER WITHOUT THE EXPRESS WRITTEN CONSENT OF SAMTEC, INC.



520 PARK EAST BLVD, NEW ALBANY, IN 47150  
PHONE: 812-944-6733 FAX: 812-948-5047  
e-Mail: info@SAMTEC.com code 53322

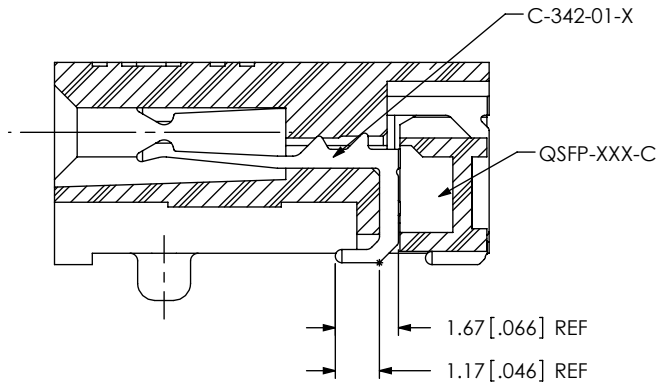
MATERIAL: DO NOT SCALE DRAWING SHEET SCALE: 4:1

INSULATOR: LCP, COLOR: BLACK  
CONTACT: PHOS BRONZE

DESCRIPTION: QSFP8 ASM

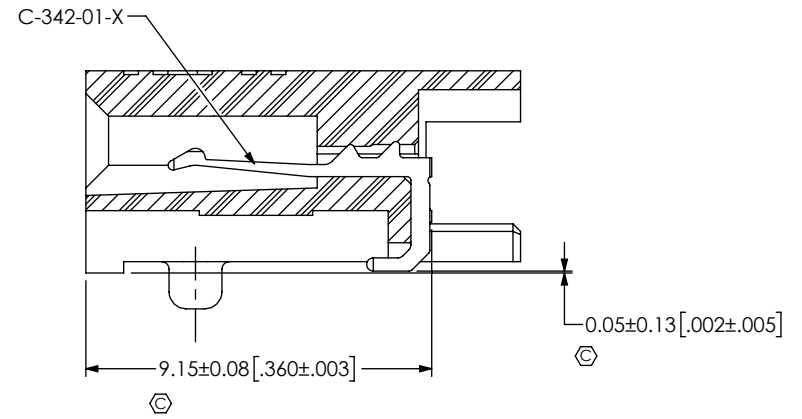
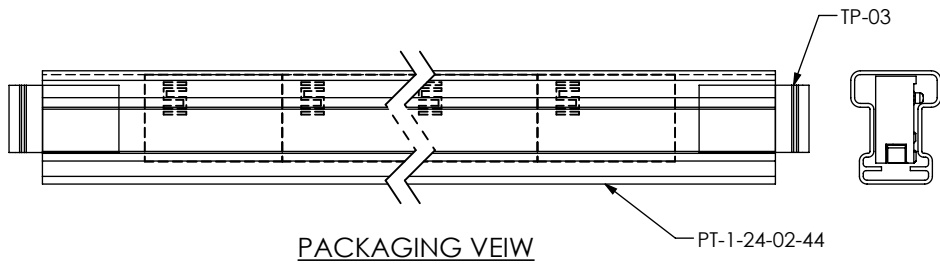
DWG. NO. QSFP8-XXX-01-X-D-RA1-XX

BY: ROY LUO 7/20/2010 SHEET 1 OF 2

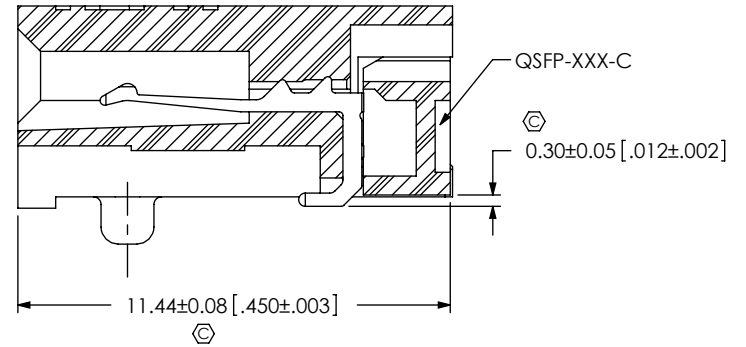


SECTION "B"-"B"  
SCALE 5:1

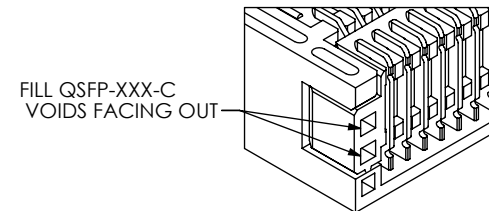
(SAME AS SECTION "A"-"A", EXCEPT AS SHOWN)



IN-PROCESS 1  
(FILL QSFP-XXX-C)



IN-PROCESS 2  
(FILL QSFP-XXX-C)



PROPRIETARY NOTE

THIS DOCUMENT CONTAINS CONFIDENTIAL AND PROPRIETARY INFORMATION AND ALL DESIGN, MANUFACTURING, REPRODUCTION, USE, PATENT RIGHTS AND SALES RIGHTS ARE EXPRESSLY RESERVED BY SAMTEC, INC. THIS DOCUMENT SHALL NOT BE DISCLOSED, IN WHOLE OR PART, TO ANY UNAUTHORIZED PERSON OR ENTITY NOR REPRODUCED, TRANSFERRED OR INCORPORATED IN ANY OTHER PROJECT IN ANY MANNER WITHOUT THE EXPRESS WRITTEN CONSENT OF SAMTEC, INC.

DO NOT SCALE DRAWING

SHEET SCALE: 4:1



520 PARK EAST BLVD, NEW ALBANY, IN 47150  
PHONE: 812-944-6733 FAX: 812-948-5047  
e-Mail info@SAMTEC.com code 55322

DESCRIPTION: QSFP8 ASM

DWG. NO. QSFP8-XXX-01-X-D-RA1-XX

BY: ROY LUO 7/20/2010 SHEET 2 OF 2