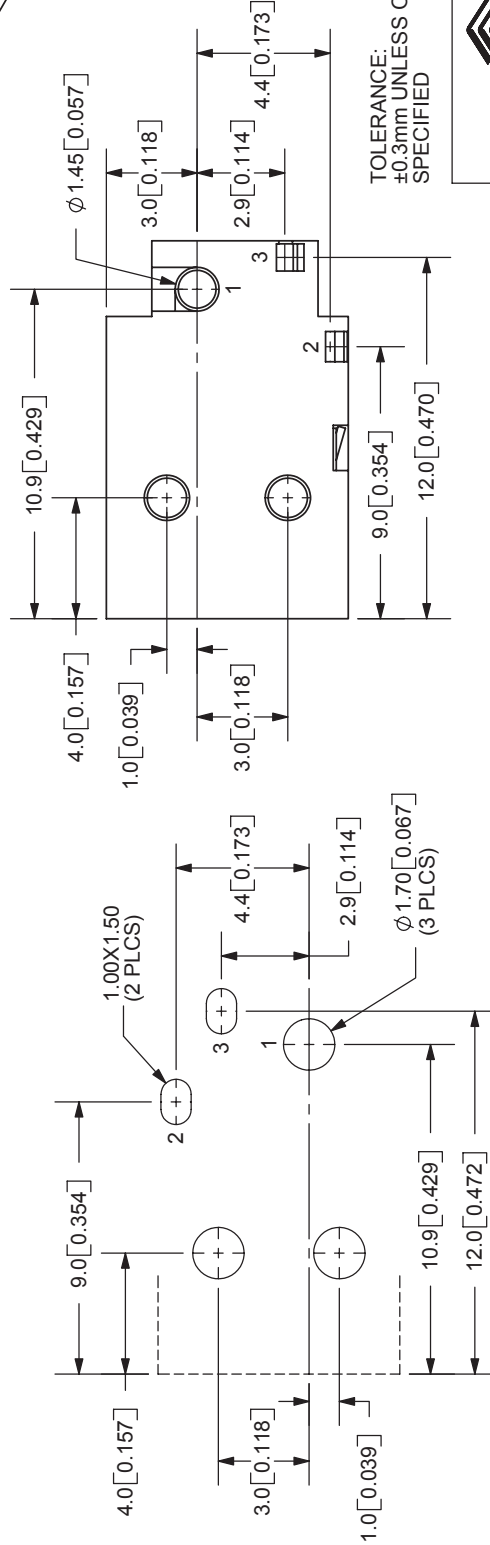
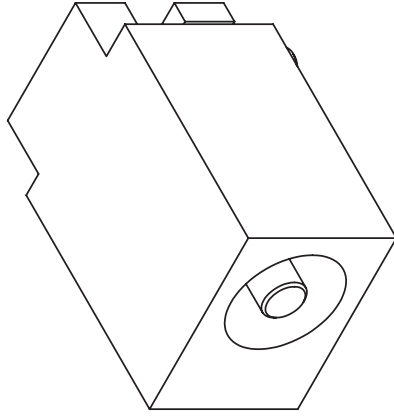
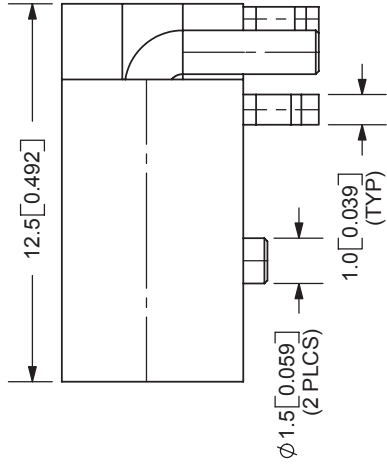
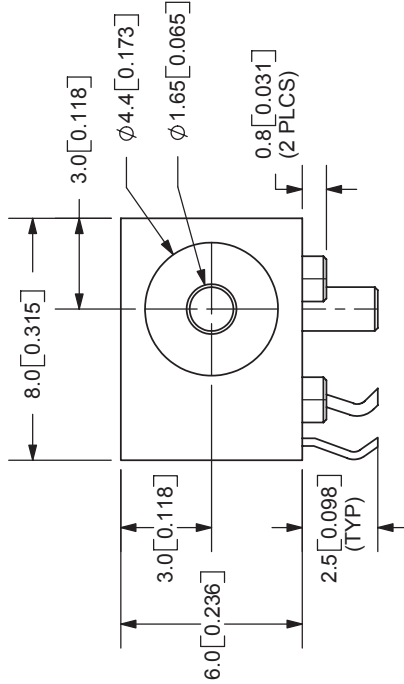


REV.	DESCRIPTION	DATE
A	NEW DRAWING	5/17/2006



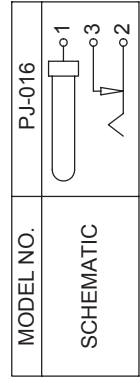
TOLERANCE:  
±0.3mm UNLESS OTHERWISE  
SPECIFIED



9615 SW Allen Blvd., Ste. 103  
Beaverton, OR 97005  
Phone: 503-643-4899  
800-275-4899  
Fax: 503-372-1266  
Website: www.cui.com

**SPECIFICATIONS:**  
RATING: 12V DC @ 1A  
CONTACT RESISTANCE: 30m OHMS MAX  
INSULATION RESISTANCE: 100M OHMS MIN: 500V DC  
VOLTAGE WITHSTAND: 500V AC R.M.S. FOR 1 MINUTE  
LIFE: 5,000 CYCLES  
OPERATING TEMP: -20° ~ +85°C

PCB LAYOUT  
TOP VIEW



CENTER PIN	TERMINAL 1	TERMINAL 2	TERMINAL 3	HOUSING	MATERIAL	PLATING
					Brass	Silver
					Brass	Silver
					Phosphor Bronze	Silver
					Brass	Silver
					PBT	

TITLE: DC POWER JACK	REV: A
PART NO: PJ-016	UNITS: MM [INCHES]
DRAWN BY: ZRJ	APPROVED BY:
	SCALE: 4:1