

CAT. NO.	NO. OF CONTACTS (MATING SIDE)	DIMENSIONS				
		A	B	C	D	E
PHEC30P-R21	15/ROW X 2 ROWS	32.67	26.67	30.3	20.42	17.78
PHEC34P-R21	17/ROW X 2 ROWS	35.21	29.21	32.84	22.96	20.32
PHEC40P-R21	20/ROW X 2 ROWS	39.02	33.02	36.65	26.77	24.13
PHEC50P-R21	25/ROW X 2 ROWS	45.37	39.37	43	33.12	30.48
PHEC60P-R21	30/ROW X 2 ROWS	51.72	45.72	49.35	39.47	36.83
PHEC68P-R21	34/ROW X 2 ROWS	56.8	50.8	54.43	44.55	41.91
PHEC80P-R21	40/ROW X 2 ROWS	64.42	58.42	62.05	52.17	49.53
PHEC100P-R21	50/ROW X 2 ROWS	77.12	71.12	74.75	64.87	62.23
PHEC120P-R21	60/ROW X 2 ROWS	89.82	83.82	87.45	77.57	74.93

NO. OF CONTACTS: 40,60,80,100,120  
CRITERION PIN

MATERIAL BODY : NYLON RESIN GLASS REINFORCED (UL94V-0)  
COLOR : BLACK  
LOCATOR : PBT RESIN GLASS REINFORCED (UL94V-0)  
COLOR : BLACK

CONTACT : COPPER ALLOY  
MOUNTING LATCH : PHOSPHOR BRONZE  
SCREW NUT : STEEL  
NICKEL PLATED

CONTACT PLATING TABLE

CONTACT AREA	REMAINDER
GOLD 0.25 MIN. OVER NICKEL 3Z	SOLDER OVER NICKEL

DRAWING NO. JSC 90736

PRINTED CIRCUIT CONNECTOR

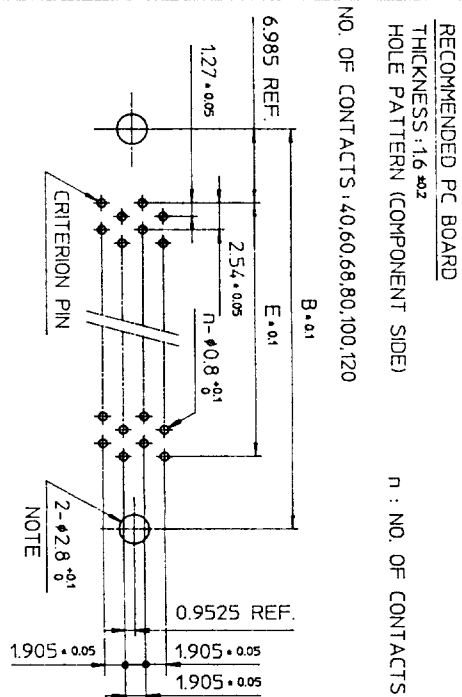
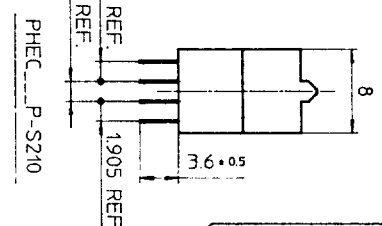
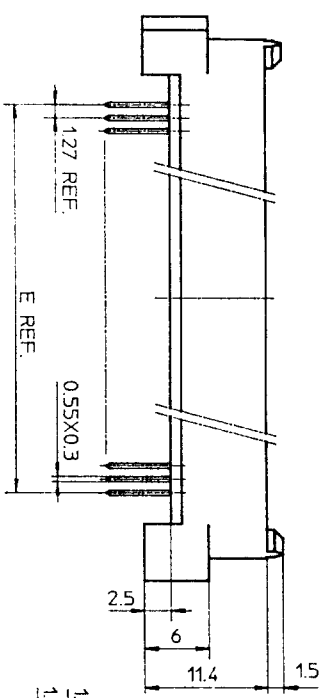
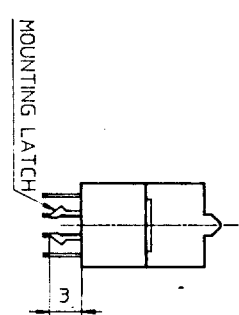
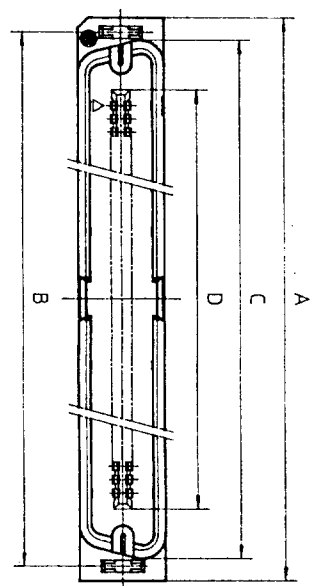
CAT. NO.	PHEC___P-R21_
DRAWING NO.	JSC 90736
REV.	3

DESIGNED	
DRAWN	M. Oba
CHECKED	A. Ely
APPROVED	J. Koyashir
DATE	Mar. 8, 1990

SCALE	
DIM. IN	mm
MATERIAL	

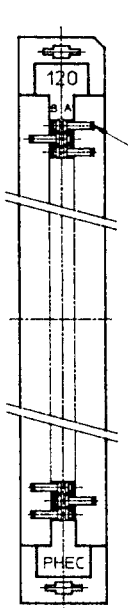
REV	DATE	DESCRIPTION	CKD
3	'92-8-14	30,34,50,68 POSITIONS ADDED. LOCATOR MATERIAL ADDED.	
2	'90-6-7	EC 7866	
1	'90-4-20	EC 7837	



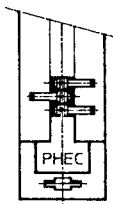


TOLERANCES  
UNLESS OTHERWISE SPECIFIED: ±0.3

NO. OF CONTACTS: 40,60,68,80,100,120



NO. OF CONTACTS: 30,34,50



CAT. NO.	NO. OF CONTACTS (MATING SIDE)	DIMENSIONS				
		A	B	C	D	E
PHEC30P-S21	15/ROW X 2 ROWS	34.55	31.75	30.3	20.42	17.78
PHEC34P-S21	17/ROW X 2 ROWS	37.09	34.29	32.84	22.96	20.32
PHEC40P-S21	20/ROW X 2 ROWS	40.9	38.1	36.65	26.77	24.13
PHEC50P-S21	25/ROW X 2 ROWS	47.25	44.45	43	33.12	30.48
PHEC60P-S21	30/ROW X 2 ROWS	53.6	50.8	49.35	39.47	36.83
PHEC68P-S21	34/ROW X 2 ROWS	58.68	55.88	54.43	44.55	41.91
PHEC80P-S21	40/ROW X 2 ROWS	66.3	63.5	62.05	52.17	49.53
PHEC100P-S21	50/ROW X 2 ROWS	79.0	76.2	74.75	64.87	62.23
PHEC120P-S21	60/ROW X 2 ROWS	91.7	88.9	87.45	77.57	74.93

MATERIAL

INSULATOR: NYLON RESIN GLASS REINFORCED (UL94V-0)  
COLOR: BLACK

CONTACT: COPPER ALLOY

MOUNTING LATCH: PHOSPHOR BRONZE  
SOLDER PLATED

CONTACT PLATING TABLE

CONTACT AREA	REMAINDER
GOLD 0.25 MIN OVER NICKEL 3Z	SOLDER OVER NICKEL

PRINTED CIRCUIT CONNECTOR

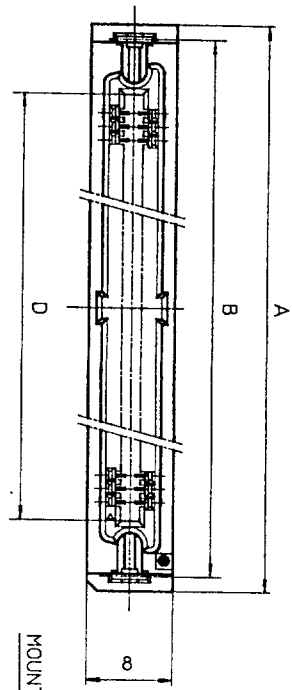
CAT. NO.	PHEC__P-S21__
DRAWING NO.	JSC 90735

**BURNDY**  
JAPAN, Ltd.

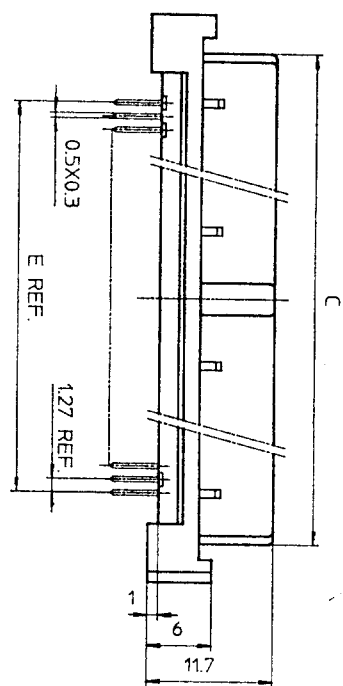
DESIGNED	
DRAWN	M. Oba
CHECKED	A. Ch
APPROVED	J. Toyoshita
DATE	Mar. 8, 1990

SCALE	1:1
DIM. IN	mm
MATERIAL	

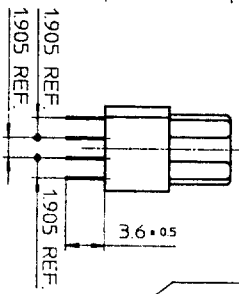
REV	DATE	DESCRIPTION	CHKD
3	8-11-92	30,34,50,68 POSITIONS ADDED.	
2	6-5-90	EC 7866	
1	4-20-90	EC 7837	



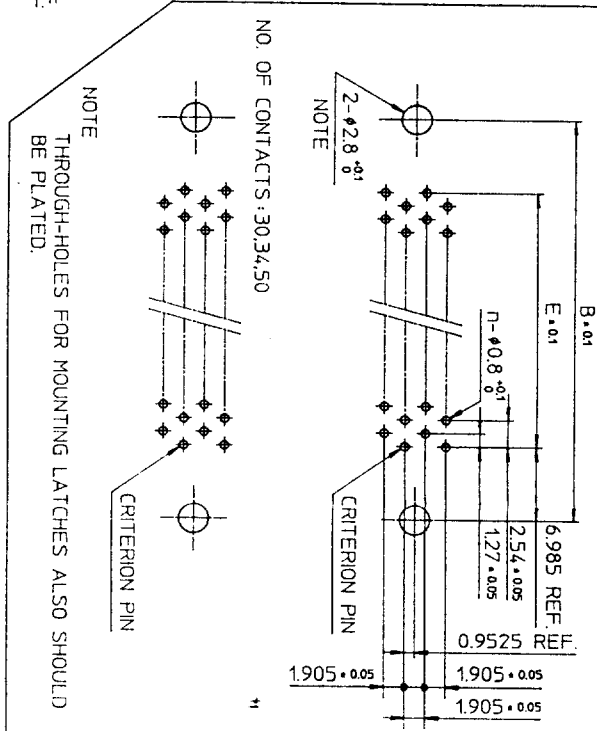
PHEC...R-S211



PHEC...R-S210

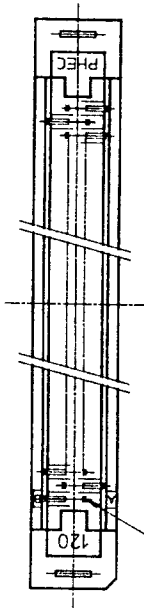


RECOMMENDED PC BOARD  
 THICKNESS: 1.6 ± 0.2  
 HOLE PATTERN (COMPONENT SIDE)  
 NO. OF CONTACTS: 40,60,68,80,100,120  
 n: NO. OF CONTACTS



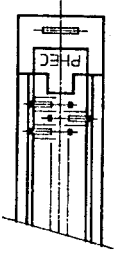
TOLERANCES  
 UNLESS OTHERWISE SPECIFIED: ±0.3

NO. OF CONTACTS: 40,60,68,80,100,120



CRITERION PIN

NO. OF CONTACTS: 30,34,50



MATERIAL

INSULATOR: PBT RESIN GLASS REINFORCED (UL94V-0)  
 COLOR: BLACK

CONTACT: PHOSPHOR BRONZE

MOUNTING LATCH: PHOSPHOR BRONZE  
 SOLDER PLATED

CAT. NO.	NO. OF CONTACTS (MATING SIDE)	DIMENSIONS				
		A	B	C	D	E
PHEC30R-S21	15/ROW X 2 ROWS	34.55	31.75	27.26	21.26	17.78
PHEC34R-S21	17/ROW X 2 ROWS	37.09	34.29	29.8	23.8	20.32
PHEC40R-S21	20/ROW X 2 ROWS	40.9	38.1	33.61	27.61	24.13
PHEC50R-S21	25/ROW X 2 ROWS	47.25	44.45	39.96	33.96	30.48
PHEC60R-S21	30/ROW X 2 ROWS	53.6	50.8	46.31	40.31	36.83
PHEC68R-S21	34/ROW X 2 ROWS	58.68	55.88	51.39	45.39	41.91
PHEC80R-S21	40/ROW X 2 ROWS	66.3	63.5	59.01	53.01	49.53
PHEC100R-S21	50/ROW X 2 ROWS	79.0	76.2	71.71	65.71	62.23
PHEC120R-S21	60/ROW X 2 ROWS	91.7	88.9	84.41	78.41	74.93

CONTACT PLATING TABLE

(THICKNESS: μm)

CONTACT AREA	REMAINDER
GOLD 0.25 MIN	SOLDER
OVER NICKEL 3.2	OVER NICKEL

DRAWING NO. JSC 90737

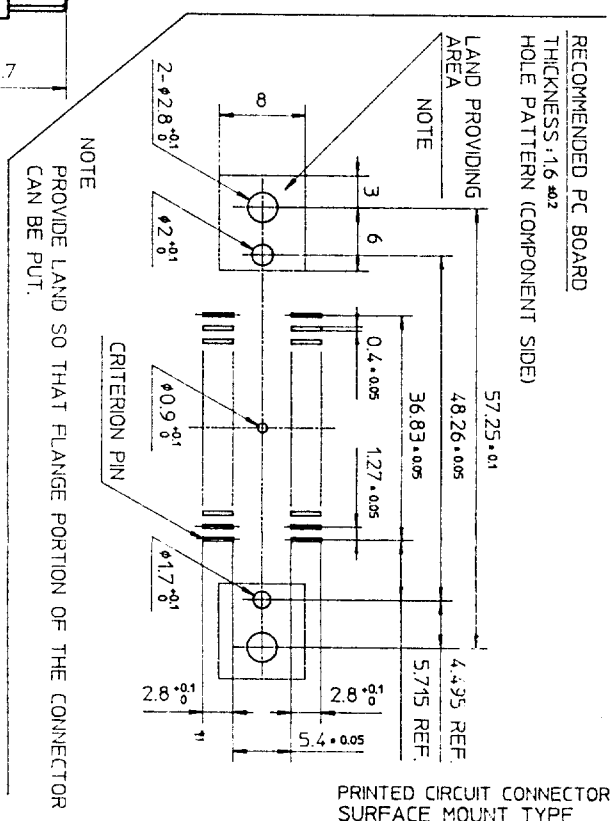
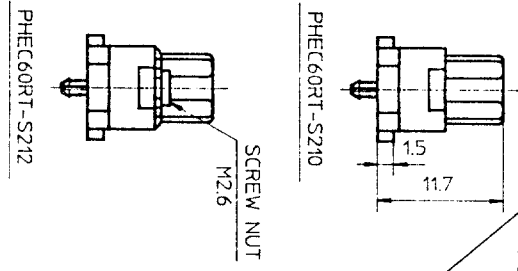
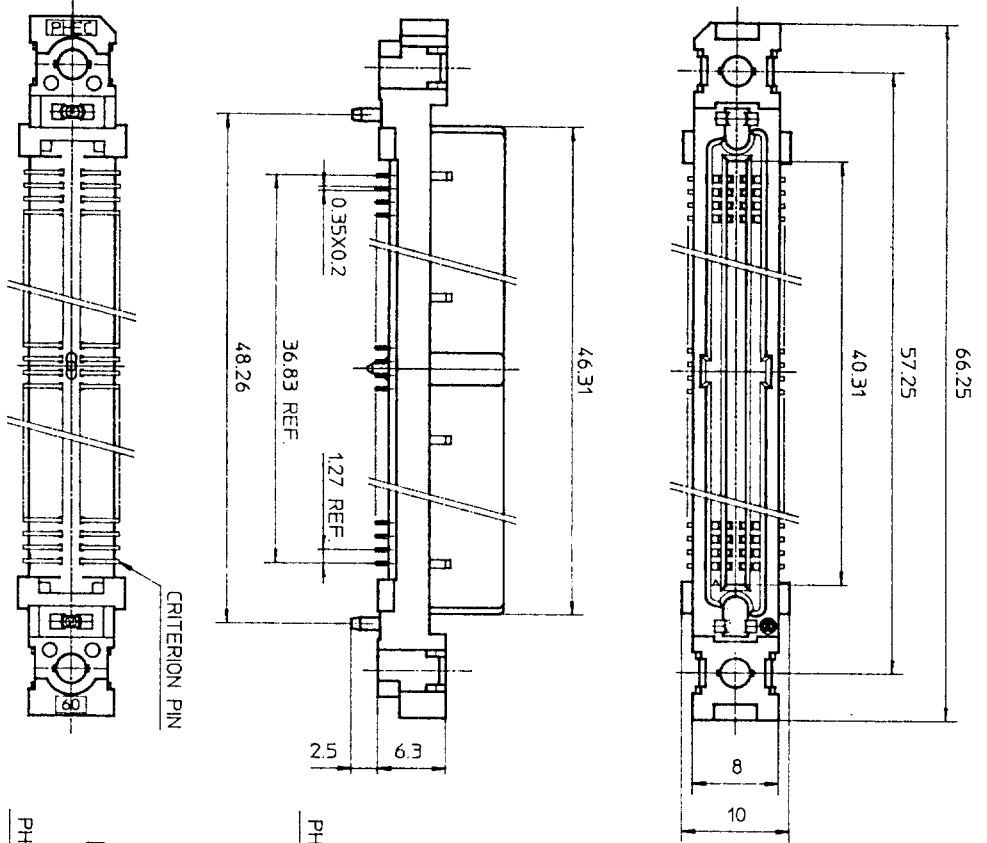
PRINTED CIRCUIT CONNECTOR  
 CAT. NO. PHEC...R-S211  
 DRAWING NO. JSC 90737  
 REV 4  
**BURNDY JAPAN Ltd.**

DESIGNED  
 DRAWN M. Oba  
 CHECKED A. Ebi  
 APPROVED J. Hasegawa  
 DATE Mar. 8, 1990

SCALE  
 DIM. IN mm  
 MATERIAL

REV	DATE	DESCRIPTION	CKD
3	8-11 '92	30,34,50,68 POSITIONS ADDED	no S.P
2	5-30 '90	EC 7866	no JK
1	4-20 '90	EC 7837	no JK

DRAWING NO.  
JSC 90739



MATERIAL  
INSULATOR : PPS RESIN GLASS REINFORCED (UL94V-0)  
COLOR : BLACK  
CONTACT : PHOSPHOR BRONZE  
SCREW NUT : STAINLESS  
NO. OF CONTACTS : 30/ROW X 2 ROWS (MATING SIDE)

CONTACT PLATING TABLE  
(THICKNESS : μm)

CONTACT AREA	REMAINDER
GOLD 0.25 MIN. OVER NICKEL 3.2	SOLDER OVER NICKEL

TOLERANCES  
UNLESS OTHERWISE SPECIFIED : ±0.3

PRINTED CIRCUIT CONNECTOR  
SURFACE MOUNT TYPE

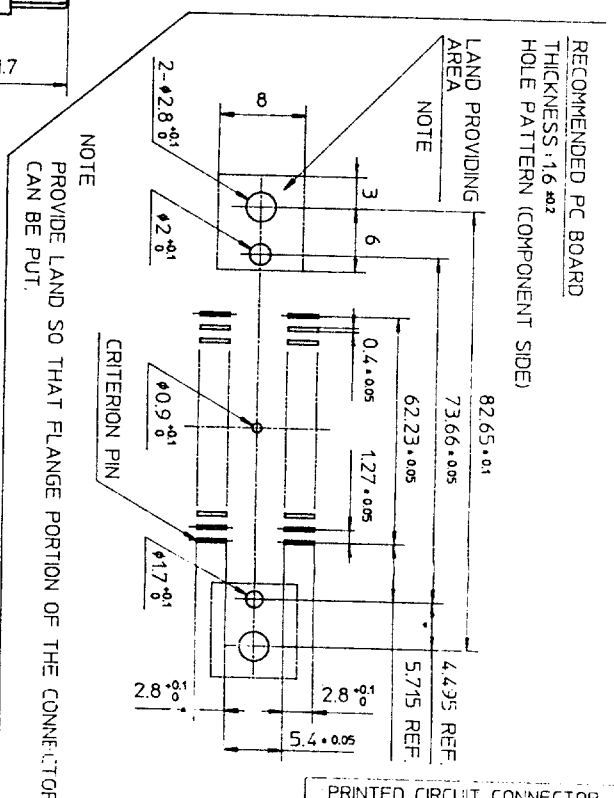
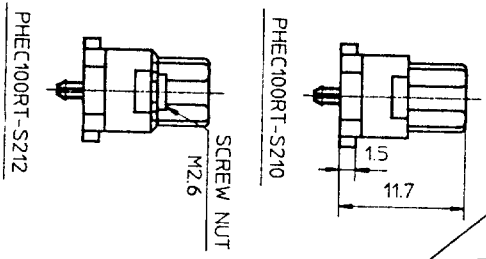
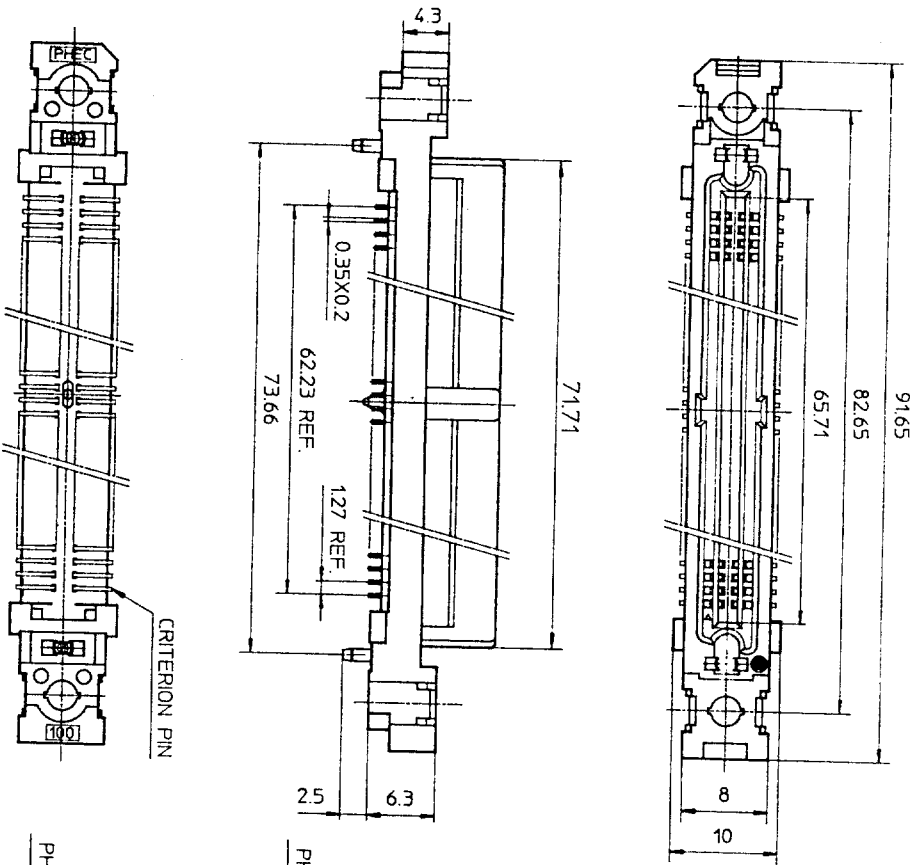
REV	DATE	DESCRIPTION	CHKD.
4	'92 8-14	WRONG CONTACT DIM. CORRECTED 100 POSITIONS OF DELETED.	M.S.
3	'92 1-8	DIM. CHANGED.	JK
2	'90 6-8	EC7866	JK
1	'90 4-20	VARIATION ADDED.	JK

SCALE : 1/2  
DIM IN : MM  
MATERIAL :

DESIGNED :  
DRAWN : M. Osa  
CHECKED : A. Eb  
APPROVED : J. Kobayashi  
DATE : Mar. 8, 1990

CAT. NO. : PHEC60RT-S21\_  
DRAWING NO. : JSC 90739  
REV : 4





MATERIAL  
 INSULATOR : PPS RESIN GLASS REINFORCED (UL94V-0)  
 COLOR : BLACK  
 CONTACT : PHOSPHOR BRONZE  
 SCREW NUT : STAINLESS  
 NO. OF CONTACTS : 50/ROW X 2 ROWS (MATING SIDE)

CONTACT PLATING TABLE  
 [THICKNESS : μm]

CONTACT AREA	REMAINDER
GOLD 0.25 MIN. OVER NICKEL 3Z	SOLDER OVER NICKEL

TOLERANCES  
 UNLESS OTHERWISE SPECIFIED : ±0.3

PRINTED CIRCUIT CONNECTOR  
 SURFACE MOUNT TYPE

CAT. NO. PHEC100RT-S21

DRAWING NO. JSC 91839 REV. 0

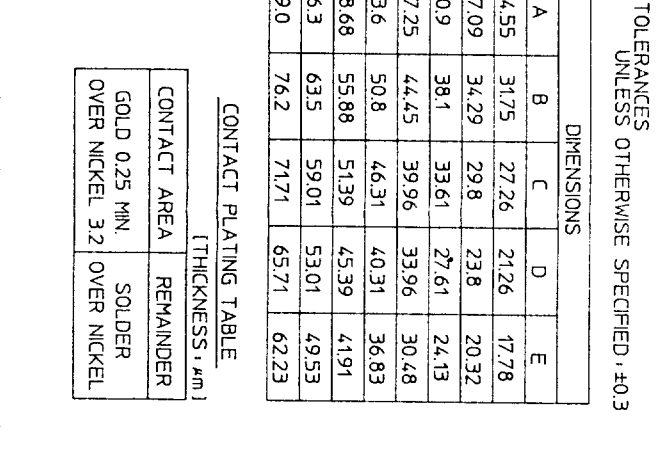
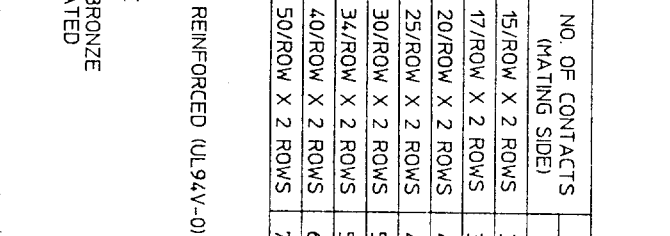
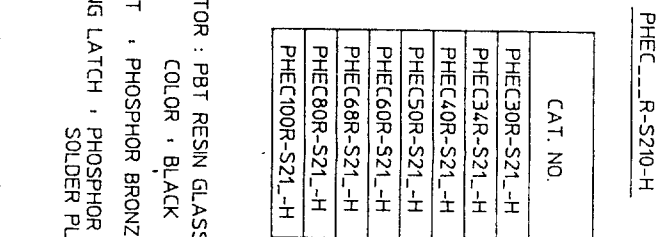
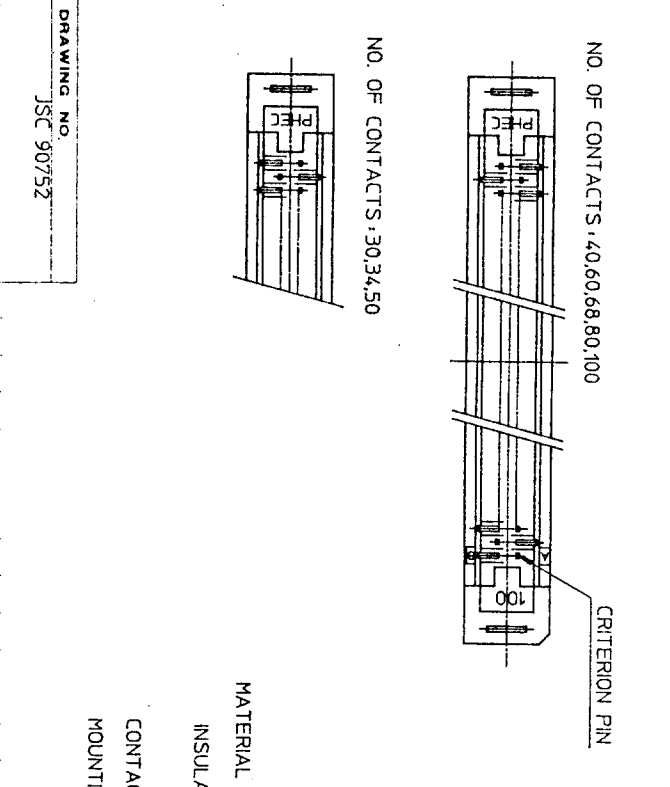
**BURNDY**  
 JAPAN, Ltd.

DESIGNED  
 DRAWN  
 CHECKED  
 APPROVED  
 DATE Aug. 11, 1992

SCALE  
 DIM. IN  
 MATERIAL

REV.	DATE	DESCRIPTION	CHKD.

DRAWING NO.  
 JSC 91839



CAT. NO.	NO. OF CONTACTS (MATING SIDE)	DIMENSIONS				
		A	B	C	D	E
PHEC30R-S21-H	15/ROW X 2 ROWS	34.55	31.75	27.26	21.26	17.78
PHEC34R-S21-H	17/ROW X 2 ROWS	37.09	34.29	29.8	23.8	20.32
PHEC40R-S21-H	20/ROW X 2 ROWS	40.9	38.1	33.61	27.61	24.13
PHEC50R-S21-H	25/ROW X 2 ROWS	47.25	44.45	39.96	33.96	30.48
PHEC60R-S21-H	30/ROW X 2 ROWS	53.6	50.8	46.31	40.31	36.83
PHEC68R-S21-H	34/ROW X 2 ROWS	58.68	55.88	51.39	45.39	41.91
PHEC80R-S21-H	40/ROW X 2 ROWS	66.3	63.5	59.01	53.01	49.53
PHEC100R-S21-H	50/ROW X 2 ROWS	79.0	76.2	71.71	65.71	62.23

NO. OF CONTACTS: 40,60,68,80,100

NO. OF CONTACTS: 30,34,50

CRITERION PIN

MATERIAL

INSULATOR: PBT RESIN GLASS REINFORCED (UL94V-0)

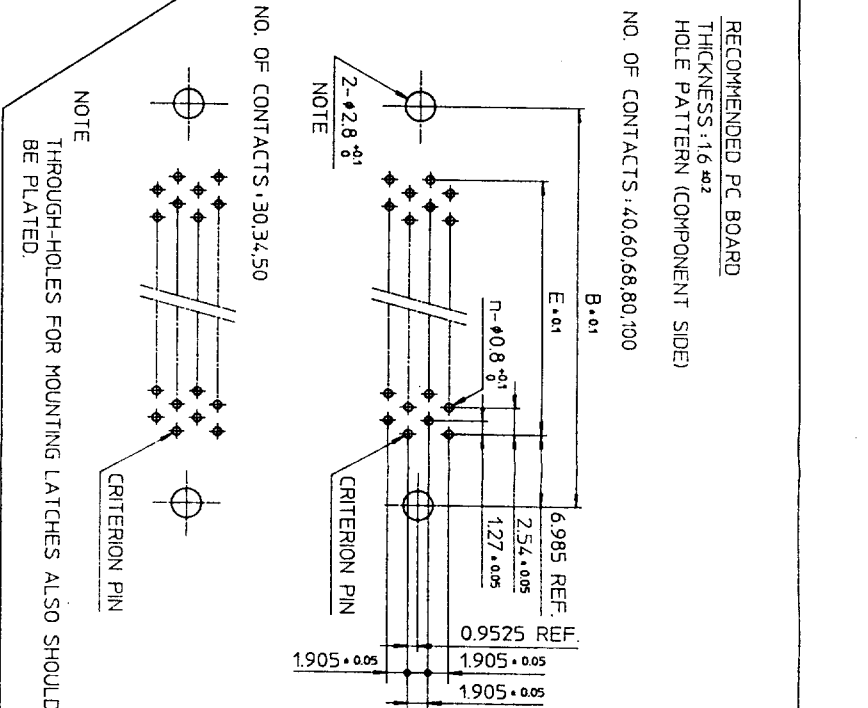
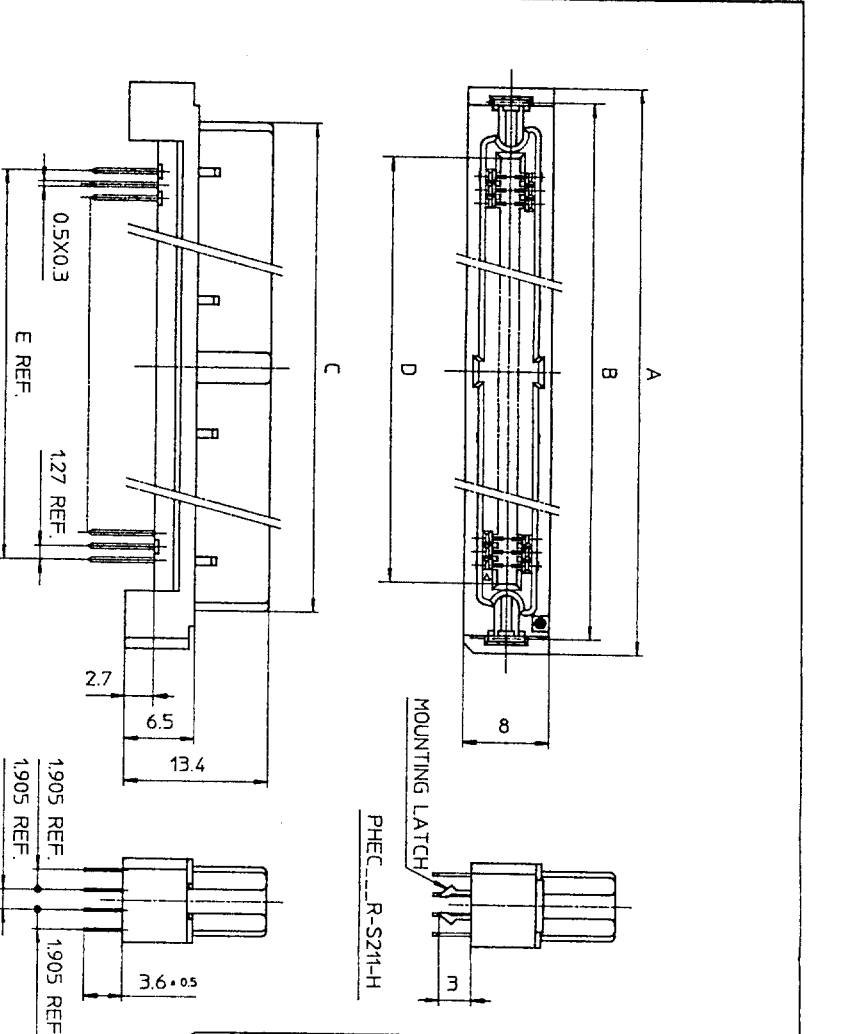
COLOR: BLACK

CONTACT: PHOSPHOR BRONZE

MOUNTING LATCH: PHOSPHOR BRONZE

SOLDER PLATED

REV	DATE	DESCRIPTION	CKD.
5	'93 6-22	100 POSITIONS ADDED.	M. O
4	'93 2-1	WRONG CONTACT DIM. CORRECTED.	S. O
3	'92 8-11	100,120 POSITIONS DELETED. 30,34,50,68 POSITIONS ADDED.	S. O
2	'90 5-30	DIM. CHANGED (36.61 → 33.61)	S. O
1	'90 5-14	EC 7866	HE



RECOMMENDED PC BOARD	THICKNESS: 1.6 ±0.2	HOLE PATTERN (COMPONENT SIDE)
NO. OF CONTACTS: 40,60,68,80,100		

NOTE
THROUGH-HOLES FOR MOUNTING LATCHES ALSO SHOULD BE PLATED.

RECOMMENDED PC BOARD	THICKNESS: 1.6 ±0.2	HOLE PATTERN (COMPONENT SIDE)
NO. OF CONTACTS: 30,34,50		

RECOMMENDED PC BOARD	THICKNESS: 1.6 ±0.2	HOLE PATTERN (COMPONENT SIDE)
NO. OF CONTACTS: 40,60,68,80,100		

PRINTED CIRCUIT CONNECTOR	HIGH STAND OFF TYPE
CAT. NO.	PHEC__R-S21_-H
DRAWING NO.	JSC 90752
REV	5

DATE: Mar. 24, 1990

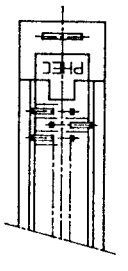
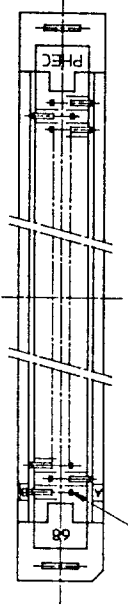
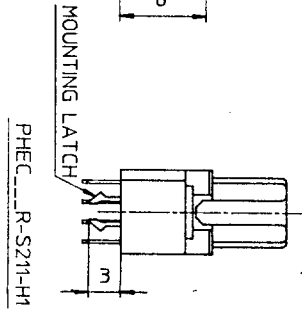
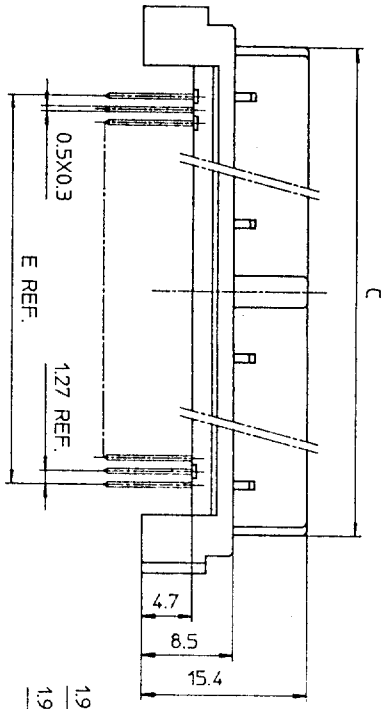
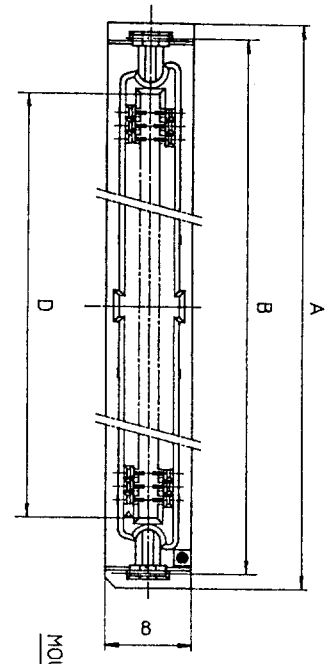
DESIGNED: M. Oba

DRAWN: M. Oba

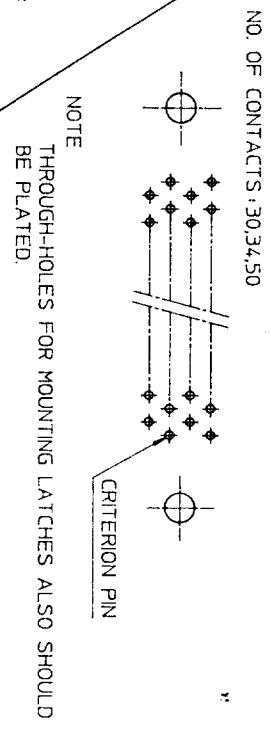
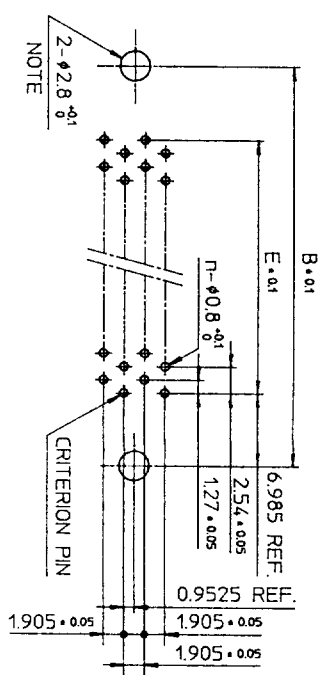
CHECKED: [Signature]

APPROVED: [Signature]





RECOMMENDED PC BOARD  
THICKNESS: 1.6 ± 0.2  
HOLE PATTERN (COMPONENT SIDE)  
NO. OF CONTACTS: 40, 60, 68



CAT. NO.	NO. OF CONTACTS (MATING SIDE)	DIMENSIONS				
		A	B	C	D	E
PHEC30R-S21-H1	15/ROW X 2 ROWS	34.55	31.75	27.26	21.26	17.78
PHEC34R-S21-H1	17/ROW X 2 ROWS	37.09	34.29	29.8	23.8	20.32
PHEC40R-S21-H1	20/ROW X 2 ROWS	40.9	38.1	33.61	27.61	24.13
PHEC50R-S21-H1	25/ROW X 2 ROWS	47.25	44.45	39.96	33.96	30.48
PHEC60R-S21-H1	30/ROW X 2 ROWS	53.6	50.8	46.31	40.31	36.83
PHEC68R-S21-H1	34/ROW X 2 ROWS	58.68	55.88	51.39	45.39	41.91

TOLERANCES  
UNLESS OTHERWISE SPECIFIED: ±0.3

MATERIAL

INSULATOR: PBT RESIN GLASS REINFORCED (UL94V-0)

COLOR: BLACK

CONTACT: PHOSPHOR BRONZE

MOUNTING LATCH: PHOSPHOR BRONZE  
SOLDER PLATED

CONTACT PLATING TABLE

CONTACT AREA	REMAINDER
GOLD 0.25 MIN. OVER NICKEL 3.2	SOLDER OVER NICKEL

DRAWING NO. JSC 91840

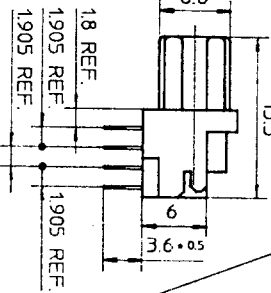
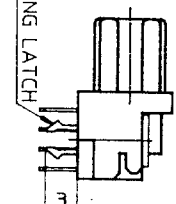
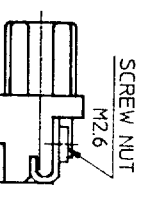
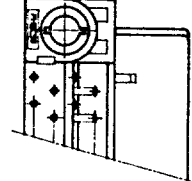
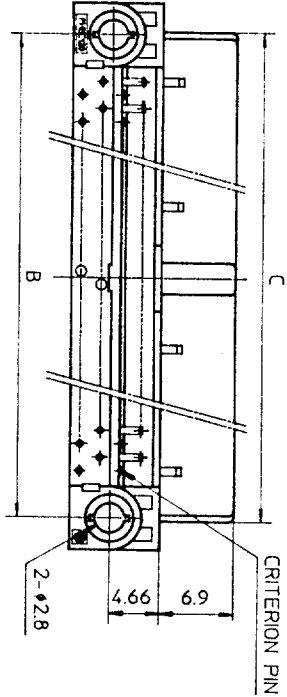
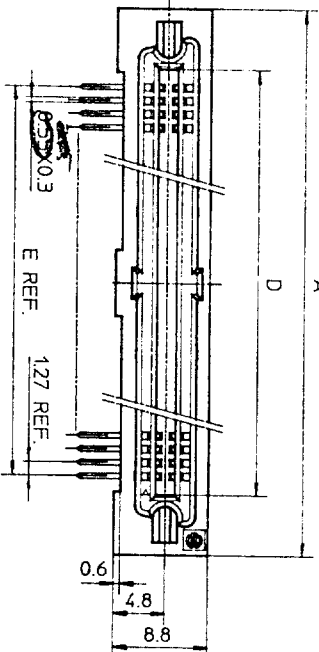
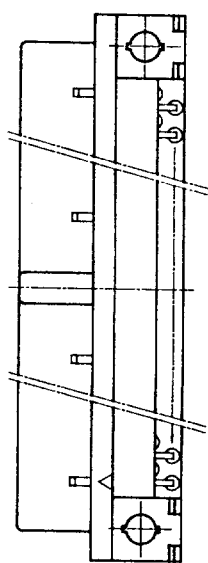
PRINTED CIRCUIT CONNECTOR  
HIGH STAND OFF TYPE  
CAT. NO. PHEC\_\_\_R-S21-H1  
DRAWING NO. JSC 91840  
REV. 1

**BURNDY**  
JAPAN, Ltd.

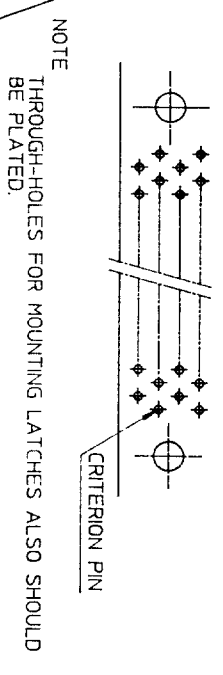
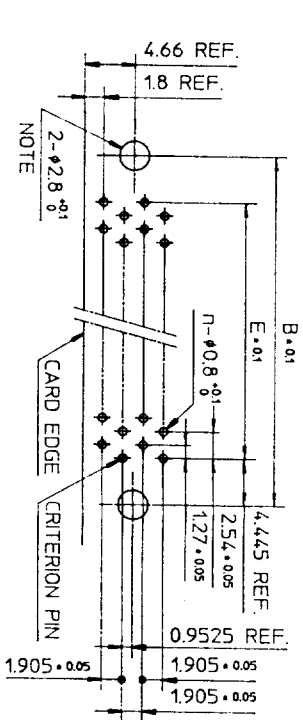
DESIGNED  
DRAWN *M. Oba*  
CHECKED A. matsuo  
APPROVED *S. Ito*  
DATE Aug. 17, 1992

SCALE 1/2  
DIM IN mm  
MATERIAL

REV. DATE	DESCRIPTION	CKD
1 93	WRONG CONTACT DIM. CORRECTED.	
2-1		



RECOMMENDED P.C. BOARD  
THICKNESS: 1.6<sup>±0.2</sup>  
HOLE PATTERN (COMPONENT SIDE)  
NO. OF CONTACTS: 40,60,68,80,100,120



NOTE  
THROUGH-HOLES FOR MOUNTING LATCHES ALSO SHOULD BE PLATED.

TOLERANCES  
UNLESS OTHERWISE SPECIFIED: ±0.3

CAT. NO.	NO. OF CONTACTS (MATING SIDE)	DIMENSIONS				
		A	B	C	D	E
PHEC30R-R21	15/ROW X 2 ROWS	32.67	26.67	27.26	21.26	17.78
PHEC34R-R21	17/ROW X 2 ROWS	35.21	29.21	29.8	23.8	20.32
PHEC40R-R21	20/ROW X 2 ROWS	39.02	33.02	33.61	27.61	24.13
PHEC50R-R21	25/ROW X 2 ROWS	45.37	39.37	39.96	33.96	30.48
PHEC60R-R21	30/ROW X 2 ROWS	51.72	45.72	46.31	40.31	36.83
PHEC68R-R21	34/ROW X 2 ROWS	56.8	50.8	51.39	45.39	41.91
PHEC80R-R21	40/ROW X 2 ROWS	64.42	58.42	59.01	53.01	49.53
PHEC100R-R21	50/ROW X 2 ROWS	77.12	71.12	71.71	65.71	62.23
PHEC120R-R21	60/ROW X 2 ROWS	89.82	83.82	84.41	78.41	74.93

MATERIAL  
BODY: PBT RESIN GLASS REINFORCED (UL94V-0)  
LOCATOR COLOR: BLACK  
CONTACT: PHOSPHOR BRONZE  
MOUNTING LATCH: PHOSPHOR BRONZE  
SCREW NUT: STEEL  
NICKEL PLATED

CONTACT PLATING TABLE  
(THICKNESS: μm)

CONTACT AREA	REMAINDER
GOLD 0.25 MIN	SOLDER
OVER NICKEL 3.2	OVER NICKEL

DRAWING NO.  
JSC 90738

PRINTED CIRCUIT CONNECTOR  
CAT. NO. PHEC\_R-R21  
DRAWING NO. JSC 90738  
REV. 3  
**BURNDY JAPAN, Ltd.**

DESIGNED  
DRAWN *M. Oba*  
CHECKED *4. Ely*  
APPROVED *J. Toyama*  
DATE Mar. 8, 1990

SCALE  
DIM. IN mm  
MATERIAL

REV.	DATE	DESCRIPTION	CKD
3	92-8-11	30,34,50,68 POSITIONS ADDED.	<i>M.O.</i>
2	90-6-8	EC 7866	<i>No</i>
1	90-4-20	EC 7837	<i>No</i>