

DESIGNED & DIMENSIONED  
IN MILLIMETERS [INCHES]

TABLE 1			
ITEM	COMPONENT	-HF	-GF
1	SUB ASSEMBLY	SUB-GRF7V-P-C-HF-RA-CA3	SUB-GRF7V-P-C-GF-RA-CA3
2	FERRULE	MCX-FER-001-F	MCX-FER-001-N
3	INSULATOR	MMCX-INS-001	
4	CAP	MMCX-CAP-001-F	MMCX-CAP-001-N

MMCX7-P-C-XX-RA-CA3

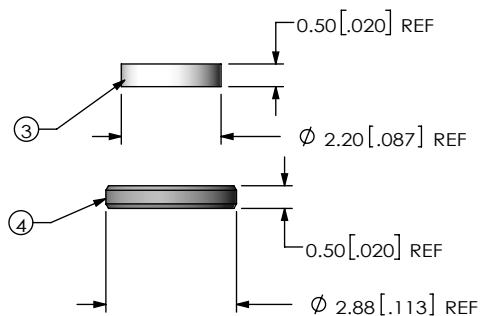
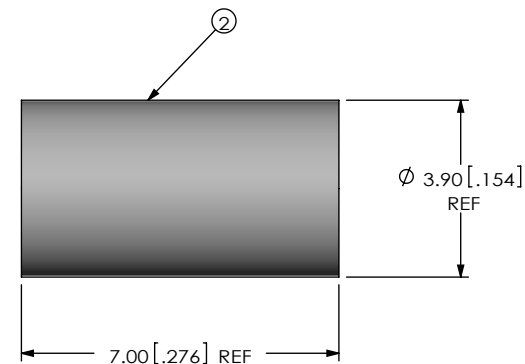
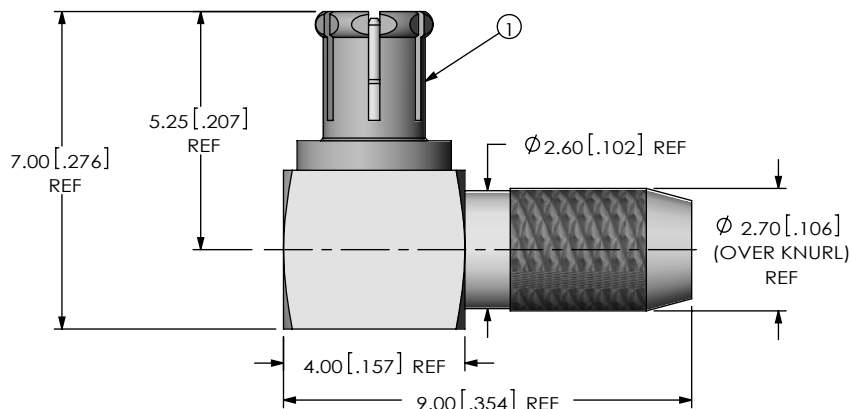
TERMINATION  
-CA3: CABLE (RG179)

ORIENTATION  
-RA: RIGHT ANGLE

PLATING SPECIFICATION  
-HF: 30µ" GOLD CENTER CONTACT,  
3µ" GOLD OUTER CONTACT  
-GF: 10µ" GOLD CENTER CONTACT,  
3µ" GOLD OUTER CONTACT  
100µ" NICKEL REMAINING PARTS  
(SEE TABLE 1)

GENDER  
-P: PLUG

TYPE  
-C: CABLE



NOTES:

- NOTE DELETED.
- PRODUCT TO BE PACKAGED IN INDIVIDUAL KITS PER PACKAGING STANDARD CO-RF-WI-3040-M.
- NOTE DELETED.

UNLESS OTHERWISE SPECIFIED,  
DIMENSIONS ARE IN MILLIMETERS.  
TOLERANCES ARE:  
DECIMALS ANGLES  
X.X: ±0.3 [.01] 5°  
X.XX: ±0.13 [.005]  
X.XXX: ±0.051 [.0020]

**PROPRIETARY NOTE**  
THIS DOCUMENT CONTAINS CONFIDENTIAL AND PROPRIETARY INFORMATION AND ALL DESIGN, MANUFACTURING, REPRODUCTION, USE, PATENT RIGHTS AND SALES RIGHTS ARE EXPRESSLY RESERVED BY SAMTEC, INC. THIS DOCUMENT SHALL NOT BE DISCLOSED, IN WHOLE OR PART, TO ANY UNAUTHORIZED PERSON OR ENTITY NOR REPRODUCED, TRANSFERRED OR INCORPORATED IN ANY OTHER PROJECT IN ANY MANNER WITHOUT THE EXPRESS WRITTEN CONSENT OF SAMTEC, INC.



520 PARK EAST BLVD, NEW ALBANY, IN 47150  
PHONE: 812-944-6733 FAX: 812-948-5047  
e-Mail: info@SAMTEC.com code 55322

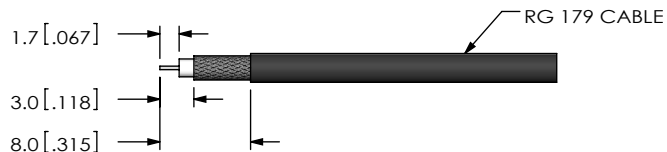
MATERIAL: DO NOT SCALE DRAWING SHEET SCALE: 6:1

SHELL: BeCu  
CABLE BODY, PIN, FERRULE, CAP: BRASS  
INSULATOR: PTFE

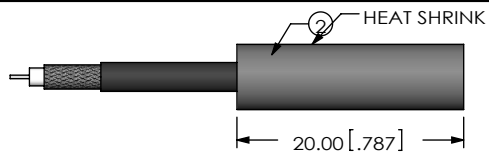
DESCRIPTION:  
TRUE 75 OHM, MMCX RIGHT ANGLE PLUG, RG179

DWG. NO.  
**MMCX7-P-C-XX-RA-CA3**

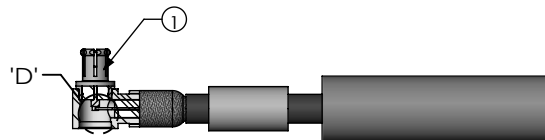
BY: ALVIN W 10/08/2011 SHEET 1 OF 2



IN PROCESS 1  
STRIP CABLE AND TIN INNER CONDUCTOR

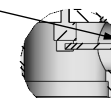


IN-PROCESS 2  
ADD HEAT SHRINK TUBE & FERRULE



IN-PROCESS 3  
FLARE SHIELD & ADD SUB ASSEMBLY

END OF CABLE DIELECTRIC  
SHOULD SEAT AGAINST  
CONTACT CUP

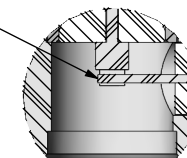


DETAIL 'D'  
SCALE 4 : 1



IN-PROCESS 4  
CRIMP FERRULE  
(USE CRIMP HAND TOOL #CAT-RF-FER-01, AND .128" DIE SIZE)

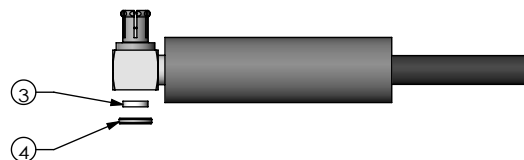
CABLE CENTER CONDUCTOR  
SHOULD NOT PROTRUDE  
OUTSIDE CONTACT CUP  
AFTER FERRULE IS CRIMPED



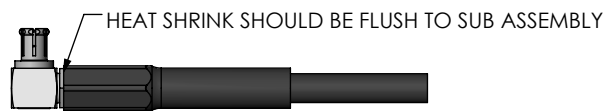
DETAIL 'E'  
SCALE 6 : 1



IN-PROCESS 5  
SOLDER SIGNAL SOCKET



IN-PROCESS 6  
PRESS INSULATOR AND CAP WITH CHAMFERED EDGE INWARDS



IN PROCESS 7  
ACTIVATE HEAT SHRINK

F:\DWG\MISC\MKTG\MMCX7-P-C-XX-RA-CA3-MKT.SLDDRW

**PROPRIETARY NOTE**  
THIS DOCUMENT CONTAINS CONFIDENTIAL AND PROPRIETARY INFORMATION AND ALL DESIGN, MANUFACTURING, REPRODUCTION, USE, PATENT RIGHTS AND SALES RIGHTS ARE EXPRESSLY RESERVED BY SAMTEC, INC. THIS DOCUMENT SHALL NOT BE DISCLOSED, IN WHOLE OR PART, TO ANY UNAUTHORIZED PERSON OR ENTITY NOR REPRODUCED, TRANSFERRED OR INCORPORATED IN ANY OTHER PROJECT IN ANY MANNER WITHOUT THE EXPRESS WRITTEN CONSENT OF SAMTEC, INC.

DO NOT SCALE DRAWING

SHEET SCALE: 3:2



520 PARK EAST BLVD, NEW ALBANY, IN 47150  
PHONE: 812-944-6733 FAX: 812-948-5047  
e-Mail: info@SAMTEC.com code 55322

DESCRIPTION:  
TRUE 75 OHM, MMCX RIGHT ANGLE PLUG, RG179

DWG. NO.  
**MMCX7-P-C-XX-RA-CA3**

BY: ALVIN W 10/08/2011 SHEET 2 OF 2