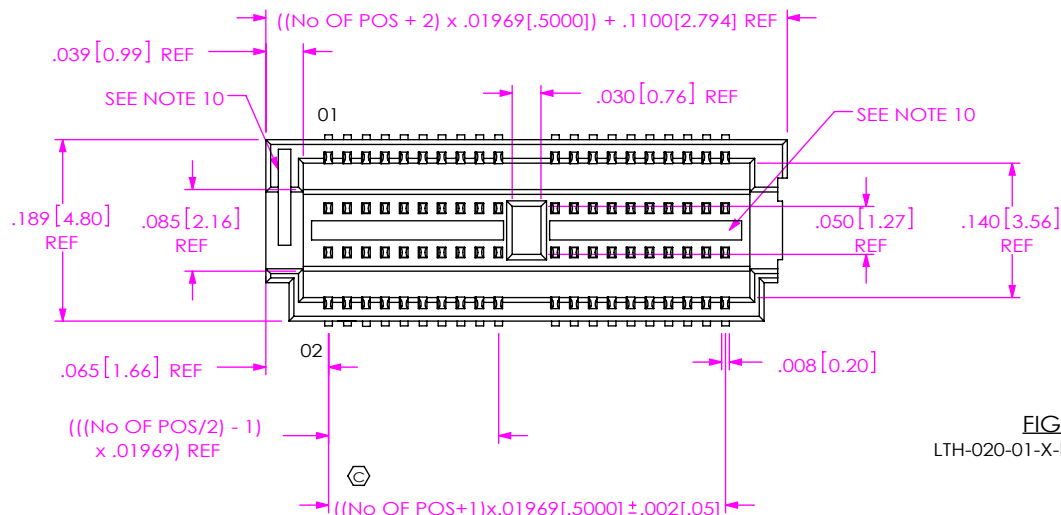


DO NOT SCALE FROM THIS PRINT



No OF POSITIONS
-010, -020, -030, -040, -050,
(PER ROW)

OPTION
-TR: TAPE AND REEL
-K: POLYAMIDE FILM PAD
(USE K-500-300, SEE FIG. 2)

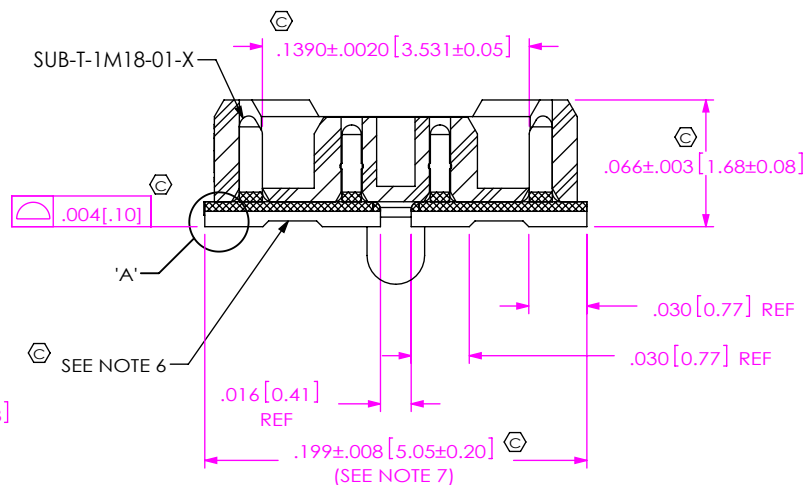
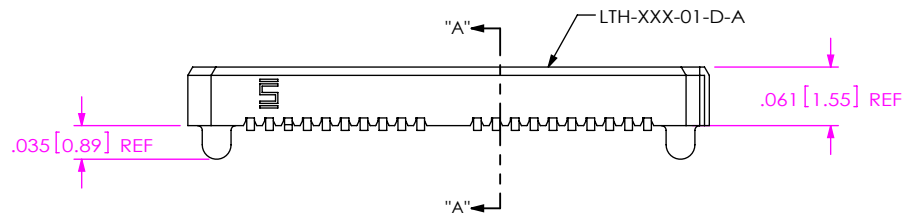
LEAD STYLE
-01: SURFACE MOUNT
(USE SUB-T-1M18-01-X PIN)

-A: ALIGNMENT PIN

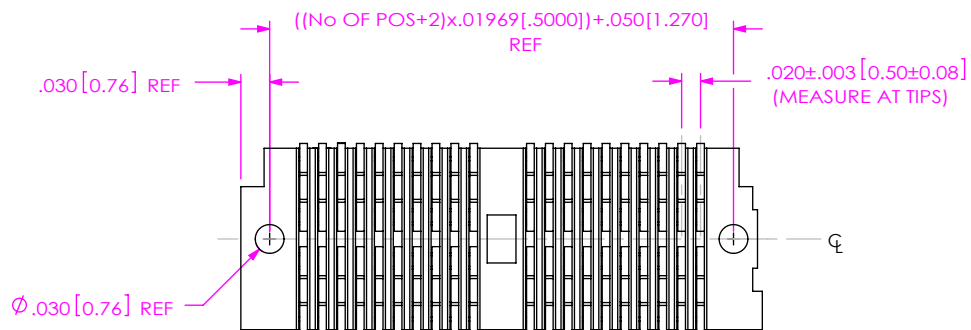
PLATING SPECIFICATION
-G: 10μ" GOLD IN CONTACT AREA,
3μ" GOLD ON TAIL
-H: 30μ" HEAVY GOLD IN CONTACT
AREA, 3μ" GOLD ON TAIL

ROW SPECIFICATION
-D: DOUBLE
(USE LTH-XXX-01-D-A)

FIG 1
LTH-020-01-X-D-A SHOWN



SECTION "A"-A"
SCALE 10 : 1

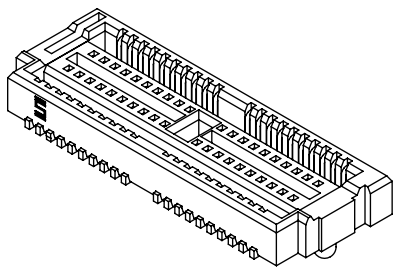


SHEAR TO $.004 [0.10]$
MAX BURR

DETAIL 'A'
SCALE 20 : 1

NOTES:

1. Ⓢ REPRESENTS A CRITICAL DIMENSION.
2. BURR ALLOWANCE: $.001 [0.03]$ MAX.
3. MINIMUM PUSHOUT FORCE: 6 OZ MIN.
4. PARTS TO BE MOLDED TO POSITION
5. NOTE DELETED.
6. CUT IN THIS AREA MUST BE BELOW SURFACE MOUNT LEADS.
7. MAX VARIATION BETWEEN ADJACENT PINS TO BE $.002 [0.05]$ MAX.
8. NOTE DELETED.
9. NOTE DELETED.
10. VOIDS CAN BE USED AT VENDORS DISCRETION TO CONTROL WARP.



UNLESS OTHERWISE SPECIFIED,
DIMENSIONS ARE IN INCHES.
TOLERANCES ARE:
DECIMALS ANGLES
.XX: $\pm .01 [3]$ 2°
.XXX: $\pm .005 [13]$
.XXXX: $\pm .0020 [051]$

PROPRIETARY NOTE
THIS DOCUMENT CONTAINS CONFIDENTIAL AND PROPRIETARY INFORMATION AND ALL DESIGN, MANUFACTURING, REPRODUCTION, USE, PATENT RIGHTS AND SALES RIGHTS ARE EXPRESSLY RESERVED BY SAMTEC, INC. THIS DOCUMENT SHALL NOT BE DISCLOSED, IN WHOLE OR PART, TO ANY UNAUTHORIZED PERSON OR ENTITY NOR REPRODUCED, TRANSFERRED OR INCORPORATED IN ANY OTHER PROJECT IN ANY MANNER WITHOUT THE EXPRESS WRITTEN CONSENT OF SAMTEC, INC.

MATERIAL: DO NOT SCALE DRAWING SHEET SCALE: 5:1
INSULATOR: BLACK LCP
CONTACT: PHOS. BRONZE

DESCRIPTION:
.5mm LOW PROFILE TERMINAL ASSEMBLY

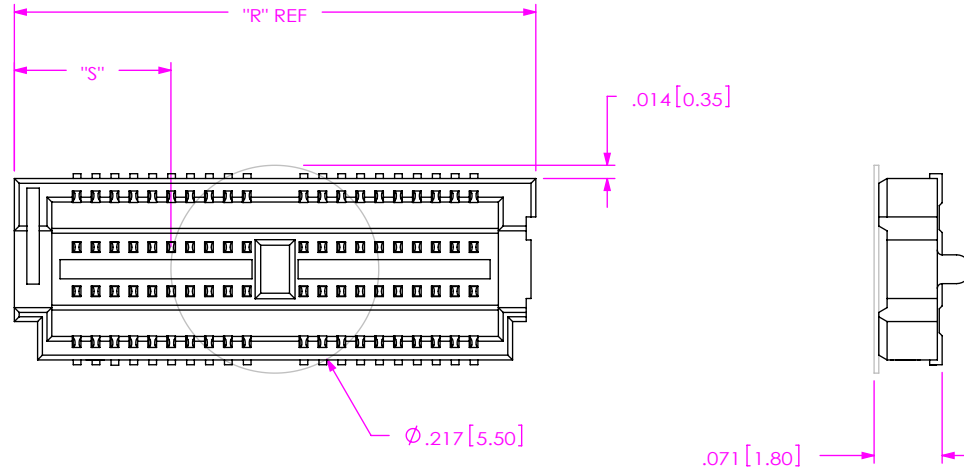
DWG. NO.
LTH-XXX-XX-X-D-A-XX

BY: ERIC M 7/1/99 SHEET 1 OF 2

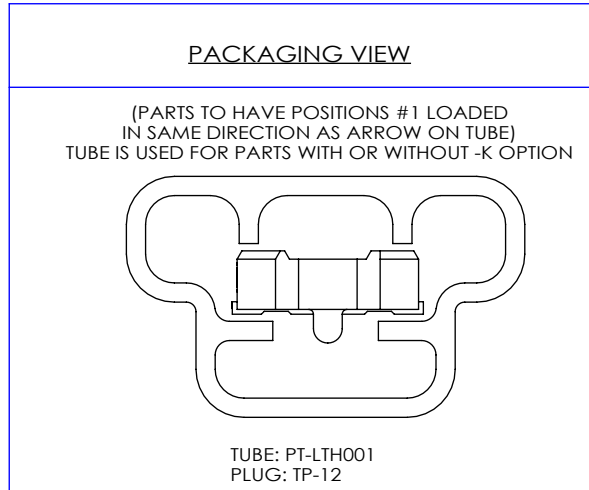



520 PARK EAST BLVD, NEW ALBANY, IN 47150
PHONE: 812-944-6733 FAX: 812-948-5047
e-Mail: info@SAMTEC.com code: 53322

FIG 2
 -K: POLYAMIDE FILM PAD
 [USE K-500-300]



NOTE: "R" = ((No OF POSITIONS + 2) x .01969[.5000]) + .1100[2.794]
 "S" = (("R" - .217[5.50]) / 2) ±.020[.51]



<p>PROPRIETARY NOTE</p> <p>THIS DOCUMENT CONTAINS CONFIDENTIAL AND PROPRIETARY INFORMATION AND ALL DESIGN, MANUFACTURING, REPRODUCTION, USE, PATENT RIGHTS AND SALES RIGHTS ARE EXPRESSLY RESERVED BY SAMTEC, INC. THIS DOCUMENT SHALL NOT BE DISCLOSED, IN WHOLE OR PART, TO ANY UNAUTHORIZED PERSON OR ENTITY NOR REPRODUCED, TRANSFERRED OR INCORPORATED IN ANY OTHER PROJECT IN ANY MANNER WITHOUT THE EXPRESS WRITTEN CONSENT OF SAMTEC, INC.</p> <p>DO NOT SCALE DRAWING</p> <p>SHEET SCALE: 5:1</p>		
	<p>520 PARK EAST BLVD, NEW ALBANY, IN 47150 PHONE: 812-944-6733 FAX: 812-948-5047 e-Mail: info@SAMTEC.com code: 55322</p>	
	<p>DESCRIPTION: .5mm LOW PROFILE TERMINAL ASSEMBLY</p>	
	<p>DWG. NO. LTH-XXX-XX-X-D-A-XX</p>	
BY: ERIC M	7/1/99	SHEET 2 OF 2