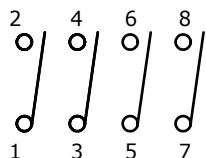


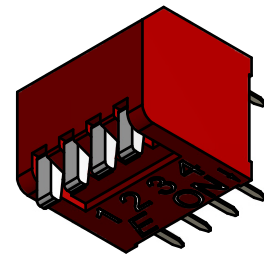
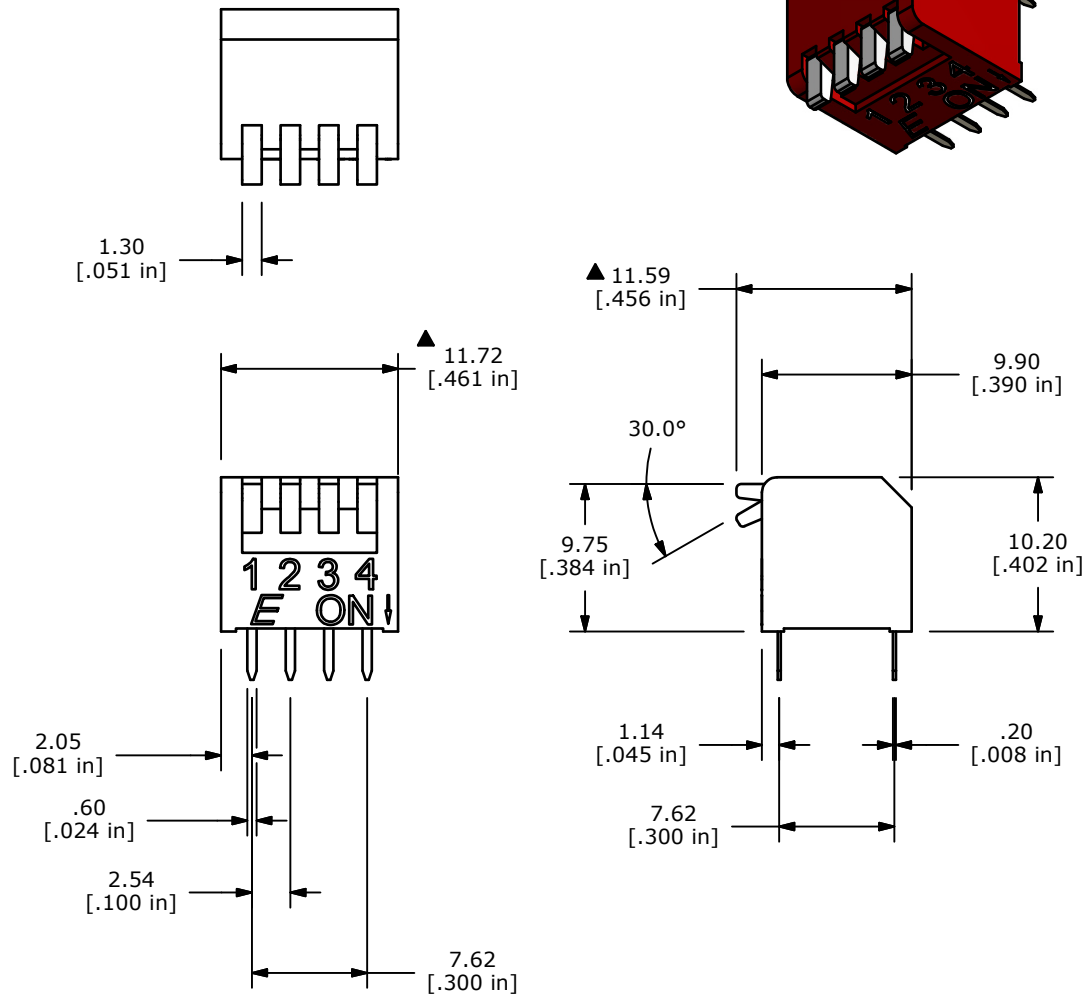
RECOMMENDED PCB LAYOUT



▲ CIRCUIT - 4 POSITION

NOTE:

1. ALL DIMENSIONS IN MM [INCH]
2. GENERAL TOLERANCE: X.X=±0.4  
X.XX=±0.25
3. TERMINAL NUMBERS FOR REF ONLY
4. PLATING MATERIAL: GOLD
5. RATING: SWITCH: 25mA @ 24VDC  
CARRY: 100mA @ 50VDC
6. OPERATING LIFE: 2,000 CYCLES, EACH CIRCUIT
7. INSULATION RESISTANCE: 100 MΩ min. @ 500VDC
8. DIELECTRIC STRENGTH: 500 V RMS @SEA LEVEL.
9. OPERATING FORCE: 1,000gf MAX.
10. OPERATING TEMP: -40°C to 85°C
11. CONTACT RESISTANCE: INITIAL: 50m Ω TYP. @ 2-4VDC @ 100mA
- ▲ 12. PART SUPPLIED WITH ALL POLES IN THE "OFF" POSITION.
13. ▲ DENOTES CRITICAL PARAMETER.
14. 2011/65/EC (ROHS) COMPLIANT



|                |          |    |         |     |
|----------------|----------|----|---------|-----|
| TITLE KAP1104E |          |    |         |     |
| SCALE          | DATE     | DR | DWG     | REV |
| 2:1            | 9/7/2017 | rc | N411042 | B   |

|   |        |                                    |        |    |
|---|--------|------------------------------------|--------|----|
| B   | 22993  | Update models/drwgs to new housing | 9/7/17 | rc |
| REV   | PCR NO | DESCRIPTION                        | DATE   | BY |
| <small>THE INFORMATION CONTAINED IN THIS DOCUMENT IS PROPRIETARY TO E-SWITCH AND IS NOT TO BE COPIED OR TRANSFERRED</small> |        |                                    |        |    |