



NOTES: UNLESS OTHERWISE SPECIFIED

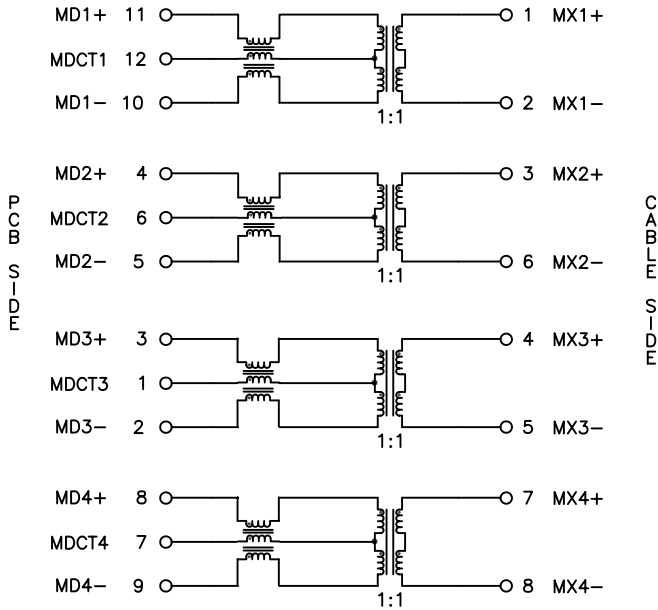
- THIS COMPONENT CONFORMS TO UL60950. UL FILE NO. IS: E216117.

|   |   |   |
|---|---|---|
|  | <b>WARNING:</b> THIS COMPONENT IS RECOGNIZED BY ONE OR MORE SAFETY AGENCIES SUCH AS UL, VDE, CSA AND/OR TUV. ALL ENGINEERING CHANGES MUST HAVE PRIOR APPROVAL BY THE DESIGN CENTER QUALITY DEPARTMENT FOR SAFETY AGENCY COMPLIANCE. | <b>EDN APPROVAL:</b><br><b>QA APPROVAL:</b><br><b>DATE:</b> |
|   |   |   |
|   |   |   |

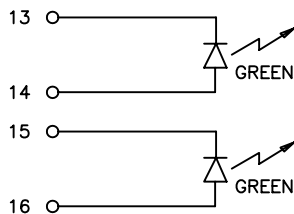
- 

|   |   |
|---|---|
|  | <b>NOTICE:</b> THIS IS A RoHS COMPLIANT COMPONENT/PRODUCT. ALL ENGINEERING CHANGES MUST HAVE PRIOR APPROVAL BY THE DESIGN CENTER. |
|   | <b>RoHS</b>   |

- PLASTIC HOUSING: THERMOPLASTIC MATERIAL WITH FLAMMABILITY RATING UL 94V-0 OR BETTER.
- CONTACT BASE MATERIAL: PHOSPHOR BRONZE.
- CONTACTS UNDERPLATE: 30-50 MICROINCHES DUCTILE NICKEL.
- CONTACTS PLATING: 50 MICROINCHES GOLD PLATING.
- SOLDER TAIL PLATING MATERIAL: 200-500 MICROINCHES 100% TIN, MATTE FINISH.
- METAL SHIELD: NICKEL PLATING ON COPPER ALLOY.
- JACK CAVITY CONFORMS TO FCC RULES AND REGULATIONS PART 68 SUBPART F.
- PCB PLATING: EG.
- SOLDERABILITY: CONFORMS TO ANSI/J-STD-002, IPC/EIA J-STD-003A.
- OPERATING TEMPERATURE: 0°C TO +70°C
- STORAGE TEMPERATURE: -20°C TO +125°C
- JEDEC MOISTURE: LEVEL 1.
- DIMENSIONS ARE IN INCHES [MILLIMETERS] WITH THE FOLLOWING TOLERANCES: [MILLIMETERS] ARE FOR REFERENCE ONLY.  
.XX= ±.02 [±0.5]  
.XXX= ±.010 [±0.25]



SCHMATIC



ELECTRICAL CHARACTERISTICS AT +25°C UNLESS OTHERWISE SPECIFIED (FOR REFERENCE ONLY. USED FOR CUSTOMER INFORMATION.)

| PARAMETER                                  | SPECIFICATION   |  |
|--|---|--|
| OPERATING TEMP                             | 0°C-70°C  |  |
| TURNS RATIO                                | 1 : 1 ±2%   |  |
| POLARITY                                   | PER SCHEMATIC   |  |
| INSERTION LOSS                             | 100 KHz   | 1-125 MHz                                  |
|  | -1.2 dB MAX   | -0.2-0.002*f <sup>1.4</sup> dB MAX         |
| RETURN LOSS<br>(Z OUT = 100 OHM ±15%)      | .1-40 MHz   | 40-100 MHz                                 |
|  | -18 dB MIN  | -12+20*LOG <sub>10</sub> (f/80 MHz) dB MIN |
| INDUCTANCE (OCL)<br>(MEDIA SIDE, 0°C-70°C) | 350 uH MIN (MEASURED AT 100 KHz, 100 mVRMS AND WITH 8 mA DC BIAS) |  |
| CROSSTALK, ADJACENT CHANNELS               | 1 MHz   | 10-100 MHz                                 |
|  | -50 dB MIN  | -55+22*LOG <sub>10</sub> (f/10) dB MIN     |
| COMMON MODE REJECTION RATIO                | 2 MHz   | 30-200 MHz                                 |
|  | -50 dB MIN  | -15+20*LOG <sub>10</sub> (f/200) dB MIN    |
| INPUT - OUTPUT ISOLATION                   | 2250 VDC MIN @ 60 SECONDS   |  |

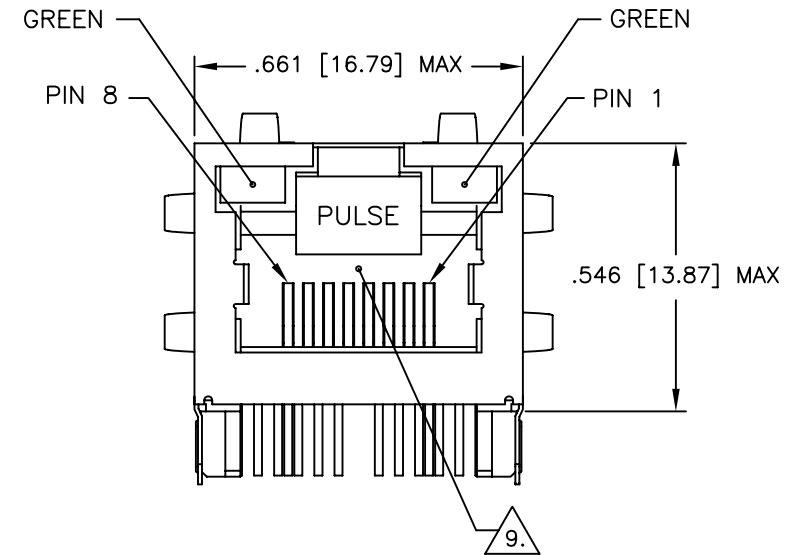
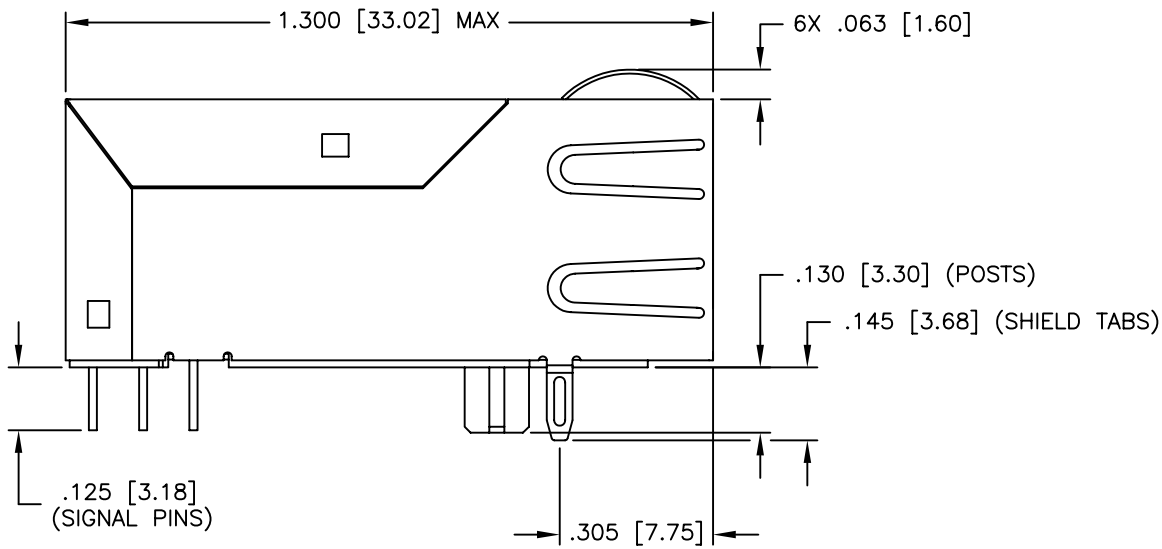
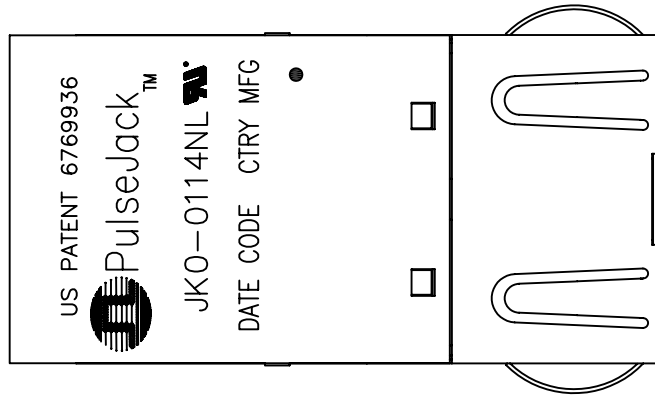
NOTE: f IS FREQUENCY IN MHZ.

|                        |                        |
|------------------------|------------------------|
| EMMITTED COLOR         | GREEN                  |
| WAVELENGTH (nm)        | 568 nm                 |
| BRIGHTNESS (mCD)       | 5 TO 7 TYP.<br>@ 10 mA |
| VIEWING ANGLE          | 85° - 100°             |
| POWER DISSIPATION (Pd) | 100 mA MAX             |
| DC FORWARD CURRENT     | 150 mA MAX             |
| REVERSE VOLTAGE (Vr)   | 2.1 TO 2.6 VOLTS       |

NOTE: PER VENDOR'S SPECIFICATIONS

© Copyright, 2010. Pulse Engineering, Inc. All rights reserved. Drawing specifications subject to change without notice. (10/07/10)

| PULSE CONFIDENTIAL<br>&<br>PROPRIETARY | PRODUCT DESCRIPTION | PS DRAWING               | SHEET:        | DWG. NO./ PART NO. | REV.       |
|--|---------------------|--------------------------|---------------|--------------------|------------|
|  |                     | CONN,RJ45,1X1,1GD,1:1,TY | PS-2390.004-A | 1                  | JK0-0114NL |



© Copyright, 2010. Pulse Engineering, Inc. All rights reserved. Drawing specifications subject to change without notice. (10/07/10)

PULSE CONFIDENTIAL  
&  
PROPRIETARY

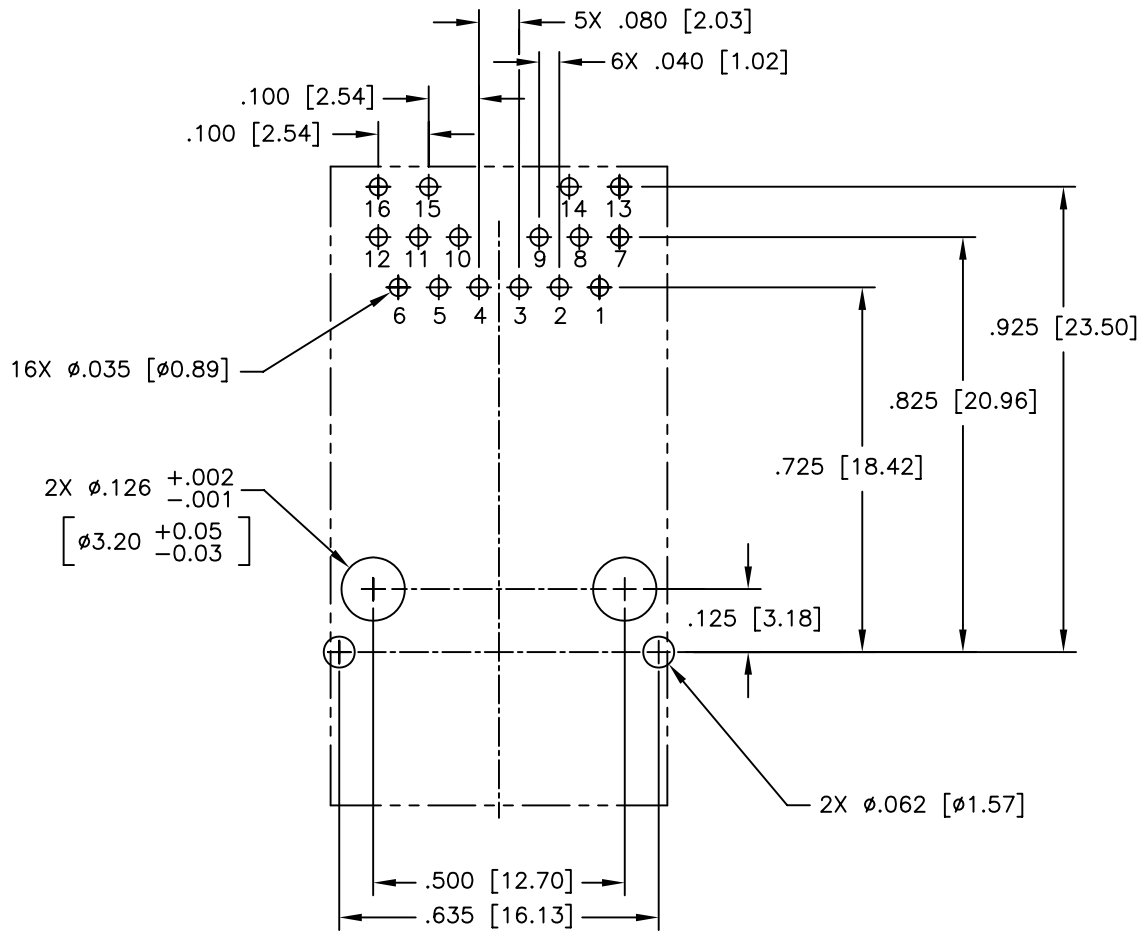
PRODUCT DESCRIPTION  
CONN,RJ45,1X1,1GD,1:1,TY

PS DRAWING  
PS-2390.004-A

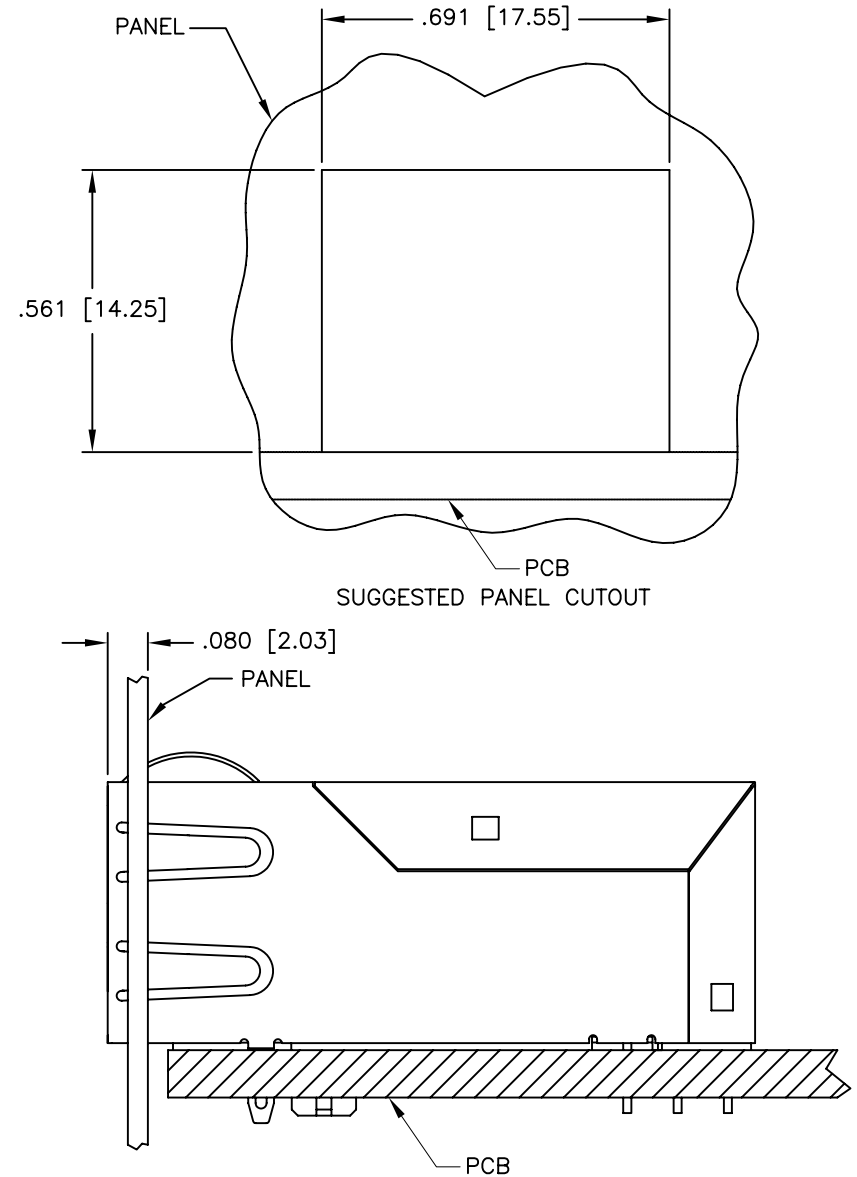
SHEET:  
2

DWG. NO./ PART NO.  
JK0-0114NL

REV.  
M10



FRONT OF CONNECTOR  
SUGGESTED PCB LAYOUT  
(COMPONENT SIDE SHOWN)  
DIMENSIONAL TOLERANCE:  
.XXX  $\pm$ .003 [X.XX  $\pm$ 0.08]



© Copyright, 2010. Pulse Engineering, Inc. All rights reserved. Drawing specifications subject to change without notice. (10/07/10)

| PULSE CONFIDENTIAL<br>&<br>PROPRIETARY | PRODUCT DESCRIPTION | PS DRAWING               | SHEET:        | DWG. NO./ PART NO. | REV.       |
|--|---------------------|--------------------------|---------------|--------------------|------------|
|  |                     | CONN,RJ45,1X1,1GD,1:1,TY | PS-2390.004-A | 3                  | JK0-0114NL |