

CONFIDENTIAL. THE INFORMATION CONTAINED IN THIS DOCUMENT IS THE PROPERTY OF COOPER INDUSTRIES, INC. IT IS NOT FOR PUBLIC DISCLOSURE. POSSESSION OF THE INFORMATION DOES NOT CONVEY ANY RIGHT TO LOAN, SELL OR DISCLOSE THE INFORMATION. UNAUTHORIZED REPRODUCTION OR USE OF THE INFORMATION IS PROHIBITED. THIS DOCUMENT IS TO BE RETURNED TO COOPER INDUSTRIES, INC. UPON COMPLETION OF THE PURPOSE FOR WHICH IT IS LOANED OR UPON REQUEST.

COPYRIGHT Cooper Industries, Inc.
This is an unpublished work. The disclosure of this work is limited to select personnel. Further dissemination or disclosure to the public is PROHIBITED. This unpublished work is protected by Federal Copyright law and all rights thereunder are reserved by Cooper Industries, Inc.

SCALE 1 X
UNLESS OTHERWISE SPECIFIED TOLERANCES TO BE:
METRIC ±.13mm
INCHES ±.005"
ANGULAR ±2°

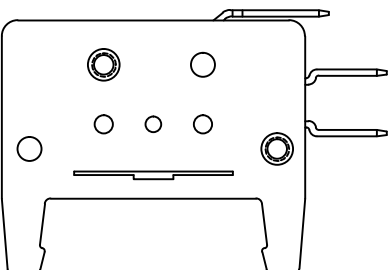
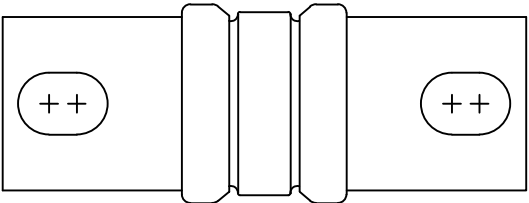
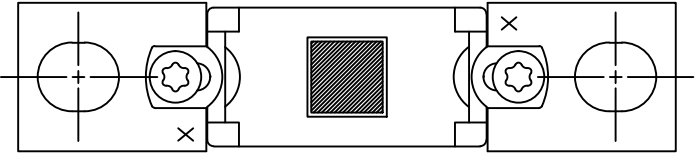
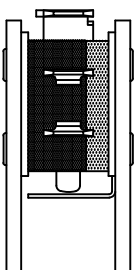
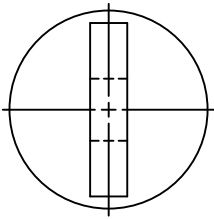
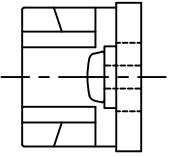
▲ (O) INDICATES CRITICAL DIMENSION OR FEATURE

PAGE 1 OF 2

METRIC(mm)
INCHES

DATE	11-29-01	NO.	FWA-1000AS14
TITLE	REMOTE INDICATOR ASSEMBLY		
SUP. NO.	FWA-1000AS14	DATED	9-21-99
ENG.	JG	CHK.	B
DWG.	JG	CHANGE	SB01436
DISTRIBUTION	St. Louis, MO 63178		
44757	56	J	

COOPER Bussmann



RFI MOUNTING ASSEMBLY #1A6160

Ⓐ FUSE FWA-1000A

INDICATOR ASSEMBLY #170H3027

PACKAGING SPECIFICATION #1P1345

