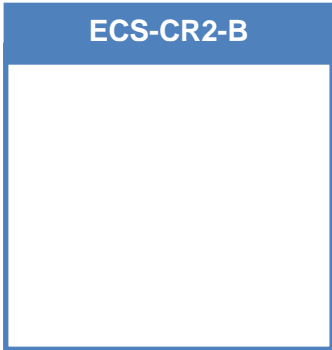


The ECS-CR2-B Chip Type SMD ceramic resonator includes built in capacitors for reduced component count. The SMD Ceramic resonator is an excellent low cost frequency control solution when absolute frequency accuracy is not important.

[Request a Sample](#)

OPERATING CONDITIONS / ELECTRICAL CHARACTERISTICS



Part Number *	Frequency Range (MHz)	Frequency Accuracy @25°C (%)	Frequency Stability -20 ~ +80°C (%)	Aging for Ten Years (%)	ESR (Ω) MAX	Built-in Capacitance (C1 & C2)	Insulation Resistance @ 10VDC
ECS-CR2-□□.□□-B	8.00 ~ 13.00	±0.5	±0.3	±0.3	25	30 pF	100 M Ω Min.
ECS-CR2-□□.□□-B	13.10 ~ 40.00	±0.5	±0.3	±0.3	40	15pF	100 M Ω Min.

Complete part number to include frequency

Part Numbering Guide: ECS-CR2-20.00-B-TR

ECS	Series	Frequency	Version	Packaging
ECS	CR2 = 8 ~ 13 MHz CR2 = 13.1 ~ 40 MHz	20.00 = 20.00 MHz	B = Built In Caps	TR = Tape & Reel 1K/Reel

- Chip Type SMD package
- RoHS Compliant (Note 7 Exemption)
- Built-in Load Capacitor
- Tape and Reel Packaging

Package Dimensions (mm)

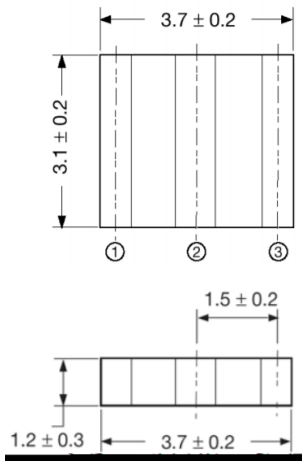


Figure 1) Top and Side Views

Pin Connections	
#1	In/Out
#2	Ground
#3	Out/In

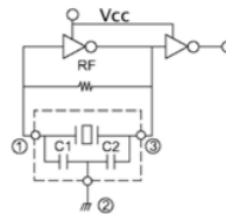


Figure 2) Test Circuit (74HCU04P)

Dimensions (mm)			
T1	T2	T3	W1
0.7 ± 0.2	1.0 ± 0.2	1.5 ± 0.2	4.1 ± 0.2

Figure 3) Land Pattern