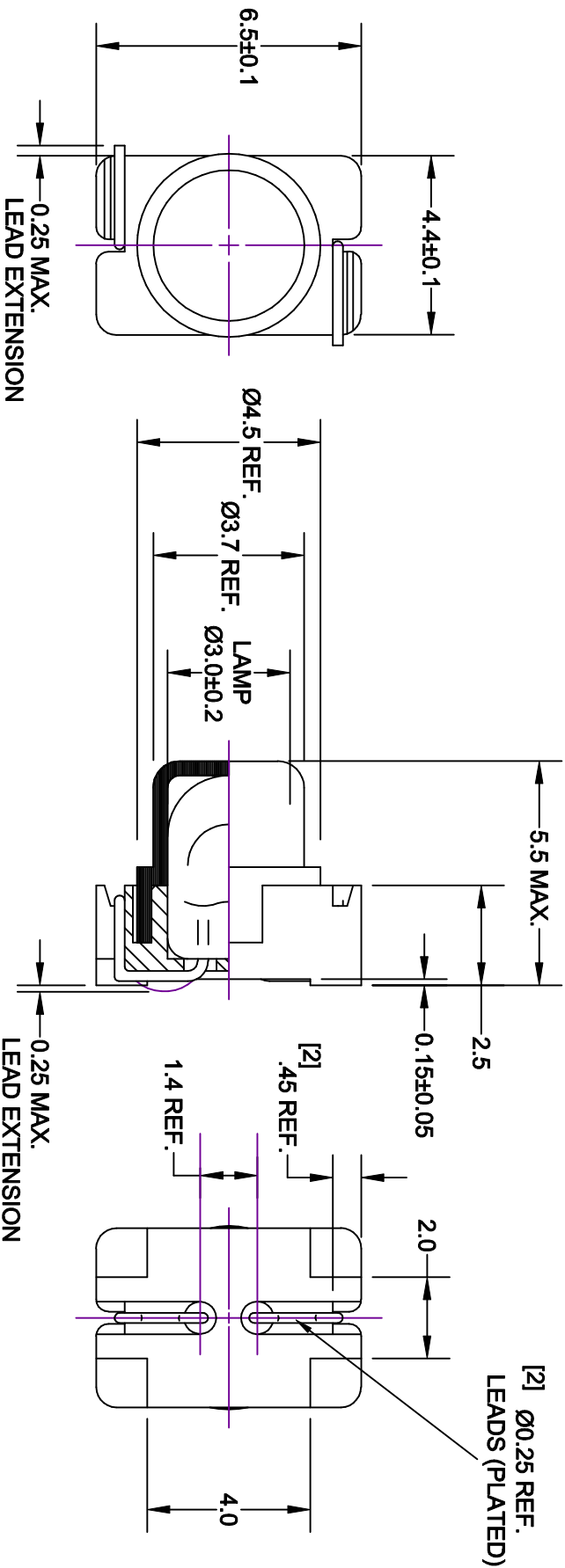
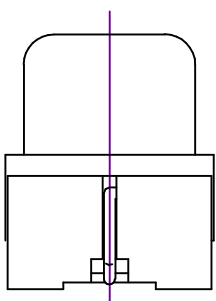


RECOMMENDED DIMENSIONS
FOR PC-BOARD PAD

REV.	DESCRIPTION/ECO NO.	DATE
	RELEASED - was P-9911-14-5 and	11/23/99
	FILTER 39-26-525	
A	CHANGE LEAD CUTAWAY PROFILE	11/29/99
B	ADD NOTE & DIM CHNGS.	1/25/00
C	DELETE NOTE	11/28/00



LAMP NUMBER: 7152				
VOLTS RATED	AMPS ± 10%	*MSCP ± 25%	*LUMENS ± 25%	AVERAGE LIFE HRS. 20,000**
5.0	.115	.150	1.89	C-2R

*LAMP RATING ONLY WITHOUT BASE AND FILTER

FILTER NUMBER: 39-26-5A	
COLOR REF.	COORDINATES
BLUE BUICK	X = 0.2393 ± .025 Y = 0.4440 ± .025

**DERIVED FROM ACCELERATED TESTING.

JKL PART NUMBER: CSD4-7152/39-26-5A

METRIC	THIRD ANGLE PROJECTION	DIMENSIONS ARE IN MILLIMETERS	TOLERANCE UNLESS OTHERWISE SPECIFIED
1 PL +/- 0.2	2 PL +/- 0.20	ANGLE +/- 0	
DRAWN BY L. WENGSTROM	APP'D BY JK	DATE 11/28/00	
- CAD DRAWING -		SCALE NONE	
MANUAL REVISIONS NOT PERMITTED		RELEASED DATE 11/29/99	REVISION DATE 11/28/00
JKL COMPONENTS CORPORATION		SHEET 1 OF 1	
TITLE		REV.	
T-1 SURFACE MOUNT LAMP WITH BASE AND FILTER (LOW PROFILE)		C	
FSCM NO. 55335		DRAWING NO. CSD4-7152/39-26-5A	