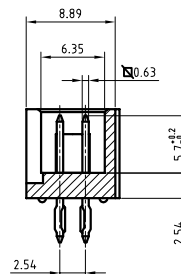
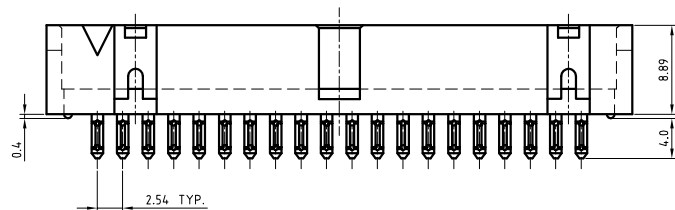
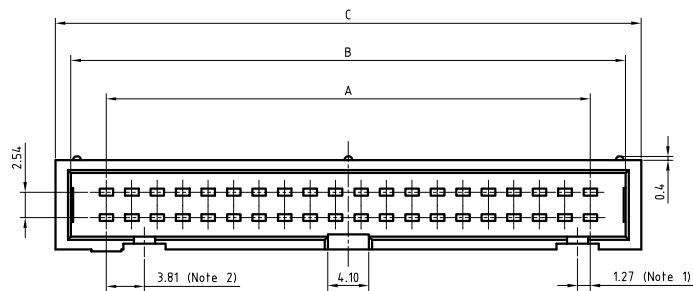


Copyright FCJ
FCconnect.com



TECHNICAL SPECIFICATION

HOUSING MATERIAL	:	GLASS REINFORCED THERMOPLASTIC UL94V0; GREY
CONTACT MATERIAL	:	COPPER ALLOY
CONTACT PLATING	:	
ACTIVE ZONE	:	FOR CODE "GS" TIN LEAD VERSION - SnPb OVER Ni FOR CODE "GS" LEAD FREE VERSION - Sn (PURE MATT) OVER Ni FOR ALL OTHER CODES - Au OVER Ni
TERMINATION ZONE	:	SnPb OVER Ni FOR TIN LEAD VERSION Sn (PURE MATT) OVER Ni FOR LEAD FREE VERSION
CURRENT RATING	:	1.5A AT 20°C
INSULATION RESISTANCE	:	≥ 1000MΩ AT 500V
CONTACT RESISTANCE	:	< 15mΩ
CONTACT RETENTION	:	15N Min.
DIELECTRIC WITHSTANDING VOLTAGE	:	1000Vrms
OPERATING TEMPERATURE	:	-55°C TO +125°C
REFERENCE SPECIFICATION	:	IEC 603-13 / DIN 41651

NOTES

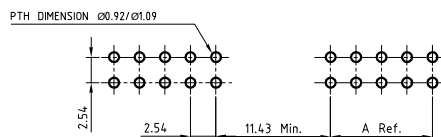
- RIGHT POLARISATION IS NOT PROVIDED FOR 10 POSITION.
- LEFT POLARISATION IS NOT PROVIDED FOR 10 & 14 POSITIONS.
- POLARISING KEYS : 8613-4102 OR 8613-4104

SERIES	BPH 7 B 20 H 00 N9 LF
TYPE OF INSULATOR	
INSULATOR WITH CENTRE POLARISATION (10 POSITION ONLY)	7
INSULATOR WITH CENTRE POLARISATION & KEY (14 TO 60 POSITIONS ONLY)	9
CONTACT SPACING	B
No. OF CONTACTS	10, 14, 16, 20, 26, 34, 40, 50, 60
TERMINATION STYLE	H
STRAIGHT PRESSFIT	
STANDARD	00
CONTACT ACTIVE ZONE PLATING	
0.4µ SELECTIVE Au PLATING	BLANK
0.75µ SELECTIVE Au PLATING	N9
SnPb (FOR TIN LEAD VERSION) / Sn PURE MATT (FOR LEAD FREE VERSION)	GS
SPECIAL CODE	
TIN LEAD VERSION	BLANK
LEAD FREE VERSION	LF

RECOMMENDED PCB HOLE CONFIGURATION

(SHOWN FROM THE COMPONENT SIDE)

PCB THICKNESS 1.6 / 2.4 / 3.2 mm



NOTES:

- THE "LF" PRODUCTS MEET EUROPEAN UNION DIRECTIVES AND OTHER COUNTRY REGULATIONS AS DESCRIBED IN GS-22-008.
- LEAD FREE OR RoHS DIRECTIVE LABELING TO BE PROVIDED AS PER GS-14-920 FOR LEAD FREE VERSION.

No. OF POSITION	A	B	C
10	10.16	18.04	20.32
14	15.24	23.12	25.40
16	17.78	25.66	27.94
20	22.86	30.74	33.02
26	30.48	38.36	40.64
34	40.64	48.52	50.80
40	48.26	56.14	58.42
44	53.34	61.22	63.50
50	60.96	68.84	71.12
60	73.66	81.54	83.82

mat'l. code		surface		tolerance		projection		product family	
SEE TECH. SPEC.		ISO 1302		ISO 406 ISO 1101		mm		BPH	
ltr	ecn no	dr	date	tolerances unless otherwise specified		mm		title	
D	105-0224	MINI	2005-11-09	.02.1		mm		BPH PRESSFIT BOX HEADER	
E	106-0066	MINI	2006-06-01	angles	linear	scale 2:1		dwg no	
F	107-0149	KR	2007-11-05	0°±1°				sheet 1 of 1 size	
		dr	YMP	1999-03-16		FCJ		C-8613-0029 A3	
		engr	KESAVAN.R	2007-11-05				type	
		chr	KESAVAN.R	2007-11-05				Product Customer Drawing	
		appd	RAKHEE GEORGE	2007-11-05					
sheet index	revision sheet	F	1						