

# SMD SHIELDED POWER INDUCTOR



18.5 x 15.2 x 7.6 mm

ASPI-1306S



RoHS  
Compliant

## FEATURES:

- Low radiation shielded architecture
- Large pads for good PCB mounting
- Low DCR, suitable for large currents
- High Energy storage

## APPLICATIONS:

- Portable communication equipment
- OA equipment
- LCD, DVD, modem, set-top box
- DC/ DC converter

## ELECTRICAL SPECIFICATIONS:

Abrakon P/N:	ASPI-1306S
Operating Temperature:	-40°C to +85°C
Storage Temperature:	+25°C

PART NUMBER	INDUCTANCE (uH) ±20%	DCR(Ω) max	Isat (A) max	Irms (A) max
ASPI-1306S-100M	10	0.0400	8.00	3.90
ASPI-1306S-150M	15	0.0480	7.00	3.40
ASPI-1306S-220M	22	0.0590	6.00	3.10
ASPI-1306S-330M	33	0.0750	5.00	2.80
ASPI-1306S-470M	47	0.0970	4.00	2.40
ASPI-1306S-680M	68	0.1380	3.00	2.00
ASPI-1306S-101M	100	0.2070	2.40	1.70
ASPI-1306S-151M	150	0.2930	2.10	1.30
ASPI-1306S-221M	220	0.4700	1.90	1.10
ASPI-1306S-331M	330	0.7800	1.10	0.86
ASPI-1306S-471M	470	0.9750	0.90	0.60
ASPI-1306S-681M	680	1.4000	0.96	0.64
ASPI-1306S-102M	1000	2.0100	0.80	0.53

### Test Conditions

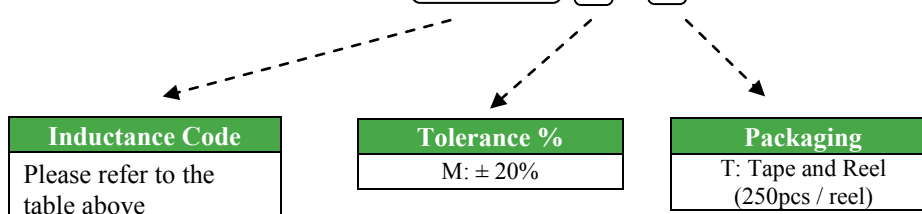
**Inductance:** 100kHz, 0.1V

**Isat:**  $\Delta L/L$  (initial)  $\geq -10\%$

**Irms:**  $\Delta T \leq 40^\circ\text{C}$

## OPTIONS AND PART IDENTIFICATION

ASPI-1306S - [ ] [ ] - [ ]



# SMD SHIELDED POWER INDUCTOR

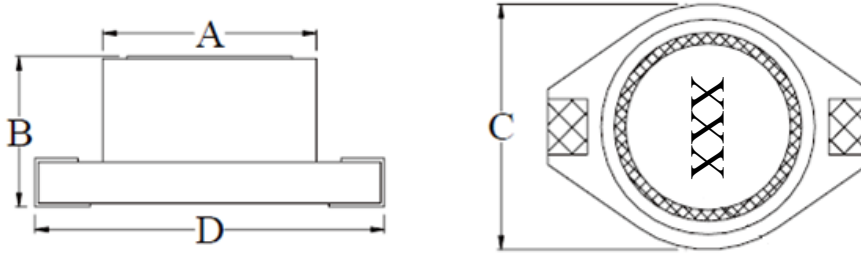


18.5 x 15.2 x 7.6 mm

ASPI-1306S

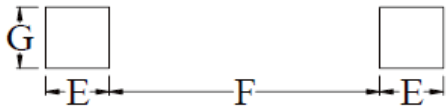


## ELECTRICAL SPECIFICATION CHART



	DIM.	TOL.
A	12.7	±0.2
B	7.62	Max.
C	15.24	Max.
D	18.54	Max.
E	2.92	REF.
F	12.45	REF.
G	2.79	REF.

### LAND PATTERNS

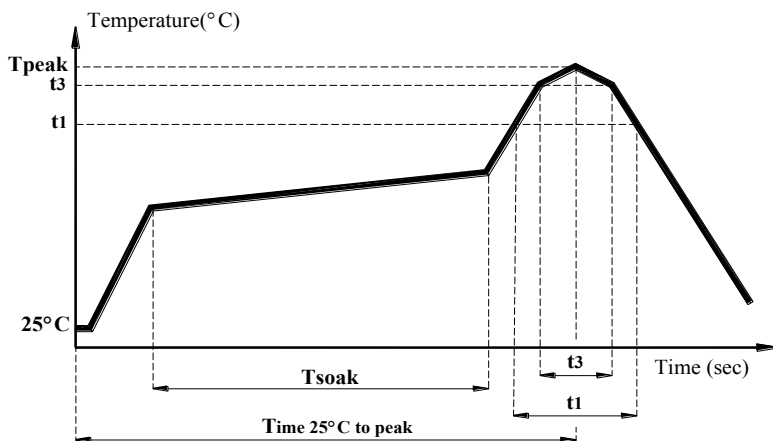


Dimension: mm

### Materials

No	Part Name	Material
1	Core	Fe <sub>2</sub> O <sub>3</sub>
		NiO
		CuO
		MgO
		ZnO
2	Enamelled Wire	Copper
		Modified Polyester Resin
3	Base	Copper
		Iron
		Zinc
		Tin
4	SN	COF
		PURE Tin PLATING

## REFLOW PROFILE:



Item	mark	
Temperature rise gradient		3°C/sec (max)
Heating time	Tsoak	50s ~ 150s
Heating temperature		120°C~180°C
Time over 217°C	t1	70 sec
Time within 5°C of actual peak temperature	t3	10~30 sec
Peak temperature	Tpeak	250 ( +0 / -5°C )
Time 25°C to peak Temperature		6 minutes max.



# SMD SHIELDED POWER INDUCTOR



18.5 x 15.2 x 7.6 mm

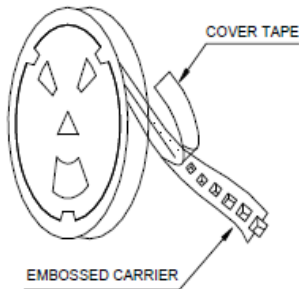
ASPI-1306S



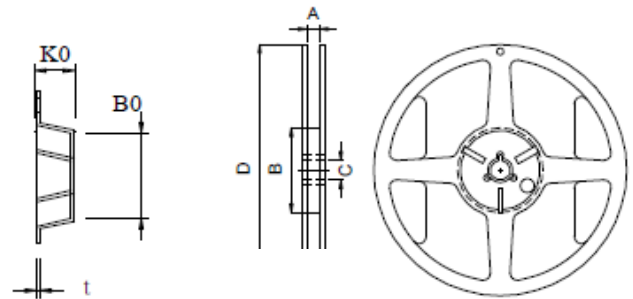
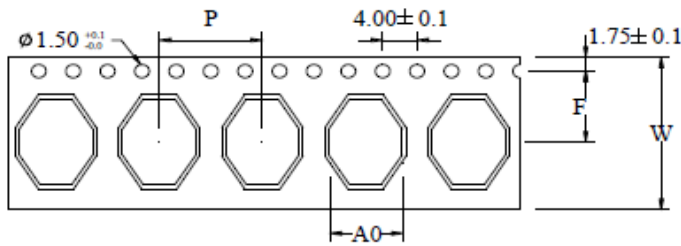
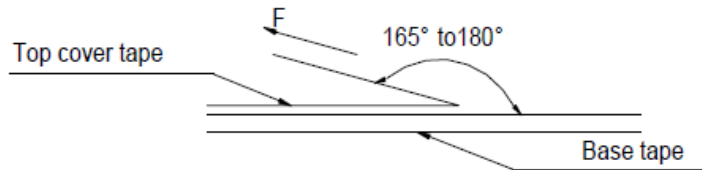
## ELECTRICAL SPECIFICATION CHART

### Packing

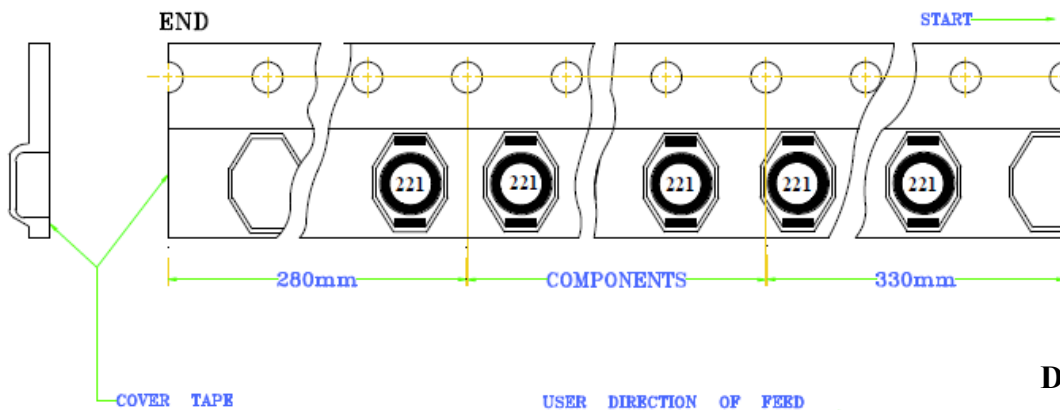
T: 250pcs / reel



★The force for tearing off cover tape is 10 to 130 grams in the arrow direction under the following conditions.



CARRIER TAPE / SIZE (mm)							REEL 13"×32mm			
A0	B0	K0	P	W	F	t	A	B	C	D
15.7 ± 0.1	19 ± 0.1	7.6 ± 0.1	20 ± 0.1	32 ± 0.3	14.2 ± 0.1	0.4 ± 0.05	32.5 ± 0.2	100 ± 0.5	13.2 ± 0.3	330 ± 1.0



Dimension: mm

**ATTENTION:** Abracon Corporation's products are COTS – Commercial-Off-The-Shelf products; suitable for Commercial, Industrial and, where designated, Automotive Applications. Abracon's products are not specifically designed for Military, Aviation, Aerospace, Life-dependant Medical applications or any application requiring high reliability where component failure could result in loss of life and/or property. For applications requiring high reliability and/or presenting an extreme operating environment, written consent and authorization from Abracon Corporation is required. Please contact Abracon Corporation for more information.

ABRACON IS  
ISO9001:2008  
CERTIFIED



Visit [www.abracon.com](http://www.abracon.com) for Terms & Conditions of Sale **Revised: 07.25.13**  
30332 Esperanza, Rancho Santa Margarita, California 92688  
tel 949-546-8000| fax 949-546-8001| [www.abracon.com](http://www.abracon.com)