

Tous droits strictement réservés. Reproduction ou communication a des tiers interdite sous quelque forme que ce soit sans autorisation écrite du propriétaire.  
Propriété de © BERG ELECTRONICS. Droits de reproduction BERG ELECTRONICS INC.



All rights strictly reserved. Reproduction or issue to third parties in any form whatever is not permitted without written authority from the proprietor.  
Property of © BERG ELECTRONICS Copyright BERG ELECTRONICS INC.

1 | 2

3 |

4

DESCRIPTION: ABOVE AND BELOW P.C.B., DECK AND PUSH-ROD LOCATION ARE AS VIEWED BY USER.

PRODUCT NO. 98725-XXXX	PCB SIDE	PUSH ROD LOCATION	SOLDER TAIL ⑤	STAND-OFF HEIGHT DIM "L"	EJ. HEADER ASSY 95706-XXX ①	EJ. MECHANISM ASSY 95627-XXXX ②	MOUNTING STYLE TO PCB AND PUSH-ROD LOCATION
000CA	ABOVE	RIGHT	R/A	0.0	000	00CA	
001CA	ABOVE	RIGHT	SMT-STG	0.0	001	00CA	
002CA	ABOVE	RIGHT	SMT-IL	0.0	002	00CA	
020CA	ABOVE	RIGHT	R/A	2.0	040	02CA	
040CA	ABOVE	RIGHT	R/A	4.0	010	04CA	
050CA	ABOVE	RIGHT	R/A	5.0	020	05CA	
100CA	ABOVE	LEFT	R/A	0.0	000	10CA	
101CA	ABOVE	LEFT	SMT-STG	0.0	001	10CA	
102CA	ABOVE	LEFT	SMT-IL	0.0	002	10CA	
120CA	ABOVE	LEFT	R/A	2.0	040	12CA	
140CA	ABOVE	LEFT	R/A	4.0	010	14CA	
150CA	ABOVE	LEFT	R/A	5.0	020	15CA	
500CA	BELOW	RIGHT	R/A	0.0	500	10CA	
501CA	BELOW	RIGHT	SMT-STG	0.0	501	10CA	
502CA	BELOW	RIGHT	SMT-IL	0.0	502	10CA	
520CA	BELOW	RIGHT	R/A	2.0	540	12CA	
540CA	BELOW	RIGHT	R/A	4.0	510	14CA	
550CA	BELOW	RIGHT	R/A	5.0	520	15CA	
600CA	BELOW	LEFT	R/A	0.0	500	00CA	
601CA	BELOW	LEFT	SMT-STG	0.0	501	00CA	
602CA	BELOW	LEFT	SMT-IL	0.0	502	00CA	
620CA	BELOW	LEFT	R/A	2.0	540	02CA	
640CA	BELOW	LEFT	R/A	4.0	510	04CA	
650CA	BELOW	LEFT	R/A	5.0	520	05CA	

NOTES:

- 1 MATERIAL:
  - 1.1 HEADER ASSY:  
PLASTIC HOUSING: LCP UL94V-0 BLACK - ABOVE PCB  
LCP UL94V-0 NATURAL (WHITE) - BELOW PCB  
PIN: PHOSPHOR BRONZE
  - 1.2 EJECT MECHANISM ASSY:  
PLASTIC GUIDE: POLYPHTHARAMID UL94V-0 BLACK  
PLASTIC PUSH-ROD BUTTON: POLYPHTHARAMID UL94V-0 BLACK  
COVER PLATE, EJECT PLATE, LINK ARM,  
PUSH ROD: STAINLESS STEEL  
EMI CONTACT: PHOSPHOR BRONZE
- 2 FINISH (PIN)  
UNDER PLATING: 0.5um MIN Ni  
CONTACT AREA: 0.1um MIN GOLD OVER  
0.5um MIN Pd-Ni  
SOLDER TAIL: 2.5um MIN Sn-Pb
- ③ DIM "X"
 

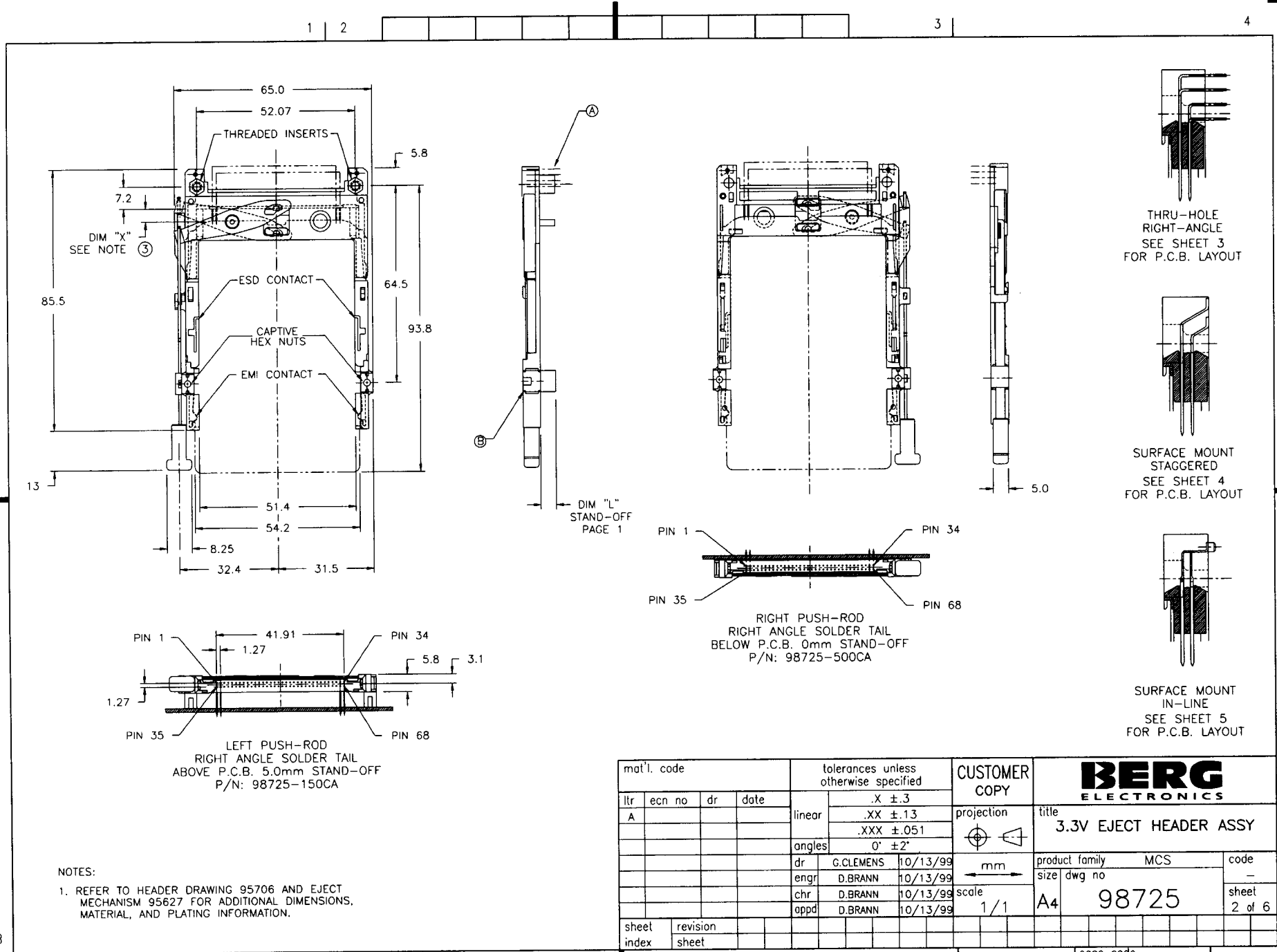
4.25±.1	3.5±.1	5.0±.1
OTHERS	36,67	1,17,34,35,51,68
- 4 RECOMMENDED HOLD DOWN - 2mm SCREWS (95121).  
RECOMMENDED SCREW TORQUE: 1.0 TO 1.5 MAX in-lbs. (1.2-1.7 cm-kgs).
- ⑤ SOLDER TAIL KEY:  
R/A = RIGHT ANGLE PIN-THROUGH-HOLE  
SMT-STG = STAGGERED SURFACE MOUNT  
SMT-IL = SURFACE MOUNT IN-LINE (SINGLE ROW)

mat'l. code				tolerances unless otherwise specified				CUSTOMER COPY		<b>BERG ELECTRONICS</b>	
lir	ecn no	dr	date	linear	.X ±.3		projection		title		
A	V92043	CGC	10/13/99	angles	.XX ±.13				3.3V EJECT HEADER ASSY		
					.XXX ±.051		mm		product family MCS code		
				dr	G.CLEMENS	10/13/99	← mm		-		
				engr	D.BRANN	10/13/99	scale		sheet		
				chr	D.BRANN	10/13/99	1/1		1 of 6		
				appd	D.BRANN	10/13/99			A4 98725		
sheet index	revision sheet	A 1	A 2	A 3	A 4	A 5	A 6	cage code		A	
								22526			

Tous droits strictement reserves. Reproduction ou communication a des tiers interdite sous quelque forme que ce soit sans autorisation écrite du propriétaire.  
 Propriete de ©BERG ELECTRONICS. Droits de reproduction BERG ELECTRONICS INC.

All rights strictly reserved. Reproduction or issue to third parties in any form whatever is not permitted without written authority from the proprietor.  
 Property of ©BERG ELECTRONICS Copyright BERG ELECTRONICS INC.

**BERG**  
ELECTRONICS



NOTES:  
 1. REFER TO HEADER DRAWING 95706 AND EJECT MECHANISM 95627 FOR ADDITIONAL DIMENSIONS, MATERIAL, AND PLATING INFORMATION.

mat'l. code				tolerances unless otherwise specified				CUSTOMER COPY		<b>BERG ELECTRONICS</b>	
l/r	ecn no	dr	date	linear	.X ±.3		projection	title			
A					.XX ±.13			3.3V EJECT HEADER ASSY			
				angles	.XXX ±.051						
				dr	G.CLEMENS	10/13/99	mm	product family		code	
				engr	D.BRANN	10/13/99		MCS		-	
				chr	D.BRANN	10/13/99		size		sheet	
				appd	D.BRANN	10/13/99		A4		2 of 6	
sheet index		revision sheet						scale		cage code	
								1/1		22526	

Tous droits strictement réservés. Reproduction ou communication à des tiers interdite sous quelque forme que ce soit sans autorisation écrite du propriétaire.  
 Propriété de © BERG ELECTRONICS. Droits de reproduction BERG ELECTRONICS INC.

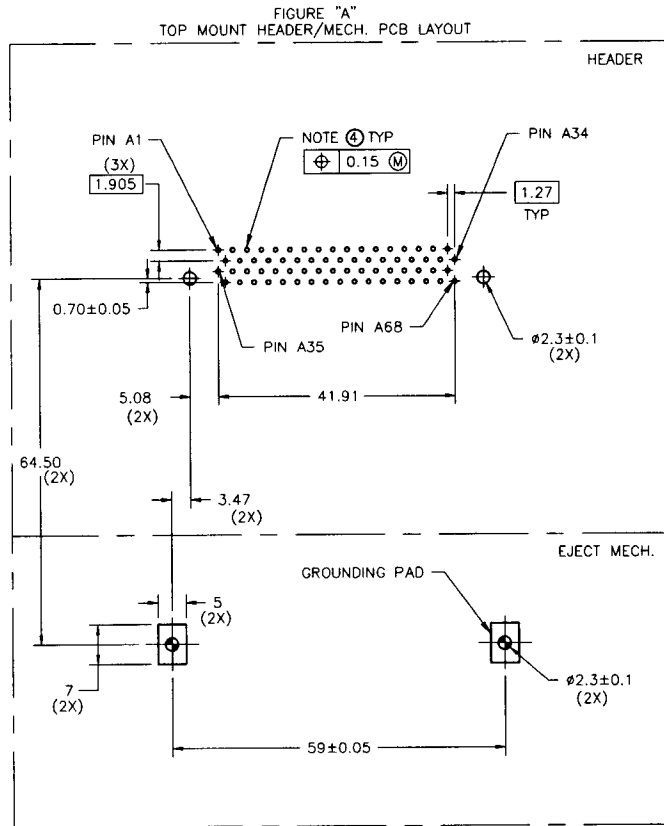
All rights strictly reserved. Reproduction or issue to third parties in any form whatever is not permitted without written authority from the proprietor.  
 Property of © BERG ELECTRONICS Copyright BERG ELECTRONICS INC.

1 | 2

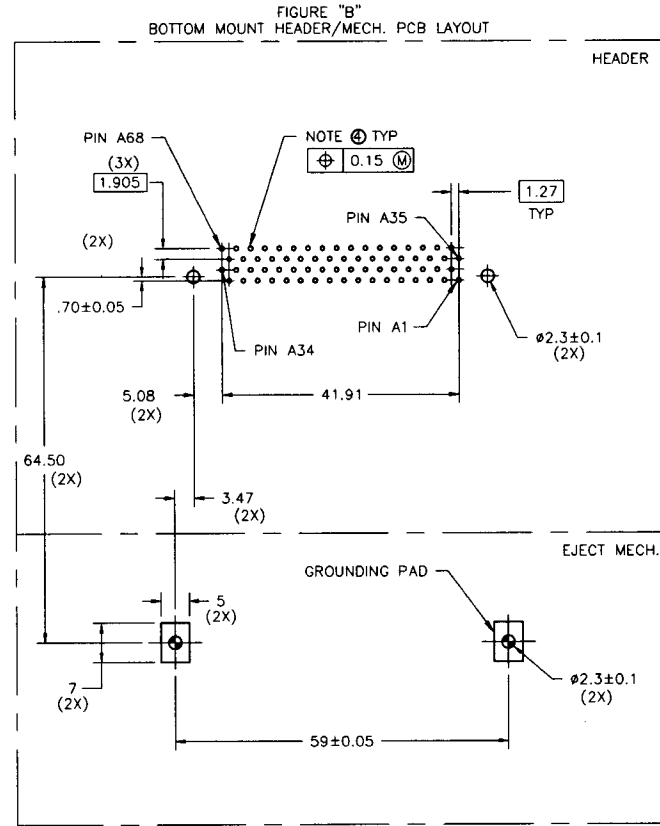
3 |

4

# Single Mount Right Angle



BOARD VIEW FROM CONNECTOR MOUNTED SIDE  
TOP OF BOARD IN APPLICATION



BOARD VIEW FROM CONNECTOR MOUNTED SIDE  
BOTTOM OF BOARD IN APPLICATION

**NOTES:**

- 1 ALL TOLERANCES  $\pm 0.15$  UNLESS NOTED.
- 2 KEEP-OUT ZONE FOR HEADERS W\STAND-OFF OPTIONS SEE SHEET 6 FIGURE A.
- 3 KEEP-OUT ZONE FOR HEADERS W\O STAND-OFF OPTIONS SEE SHEET 6 FIGURE B.
- ④ RECOMMENDED DIAMETER IS  $\phi 1.0$ .  
FOR PROCESSES USING PASTE REFLOW, HOLE MAY BE AS SMALL AS  $\phi 0.79$

mat'l. code		tolerances unless otherwise specified		CUSTOMER COPY		<b>BERG ELECTRONICS</b>	
l/r	ecn no	dr	date	linear	projection	title	
A				.X $\pm .3$ .XX $\pm .13$ .XXX $\pm .051$		3.3V EJECT HDR ASSY	
				angles	$0^\circ \pm 2'$	product family	code
				dr	G.CLEMENS 10/13/99	MCS	-
				engr	D.BRANN 10/13/99	size	sheet
				chr	D.BRANN 10/13/99	A4	3 of 6
				appd	D.BRANN 10/13/99	98725	
sheet index	revision sheet					scale	
						1:1	
						mm	

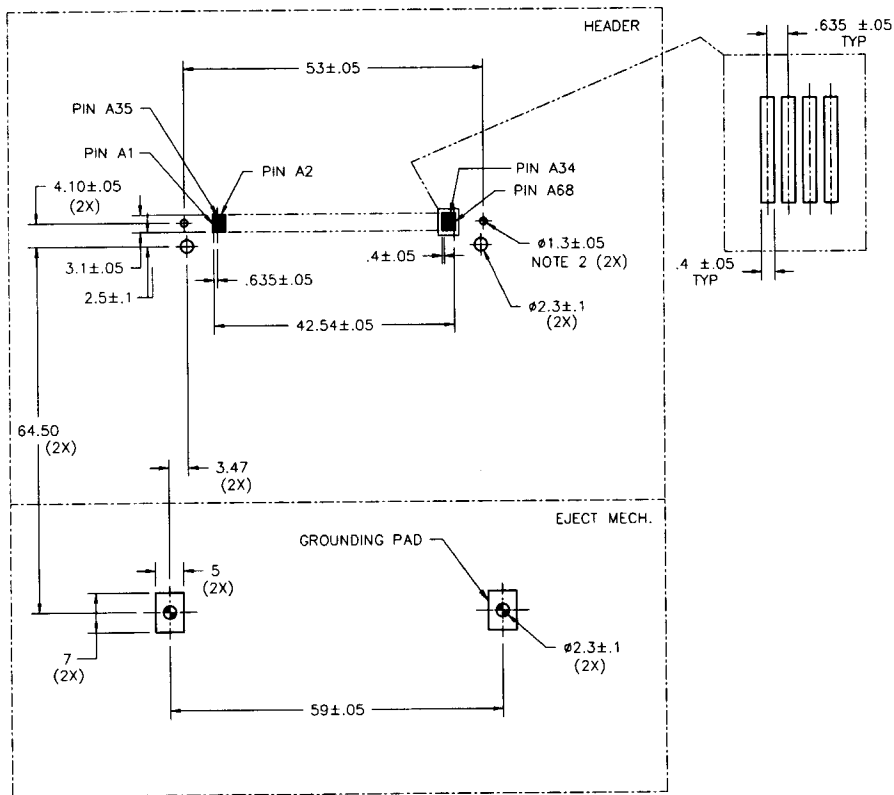


Tous droits strictement reserves. Reproduction ou communication a des tiers interdite sous quelque forme que ce soit sans autorisation écrite du propriétaire. Propriété de ©BERG ELECTRONICS. Droits de reproduction BERG ELECTRONICS INC.

All rights strictly reserved. Reproduction or issue to third parties in any form whatever is not permitted without written authority from the proprietor. Property of ©BERG ELECTRONICS Copyright BERG ELECTRONICS INC.

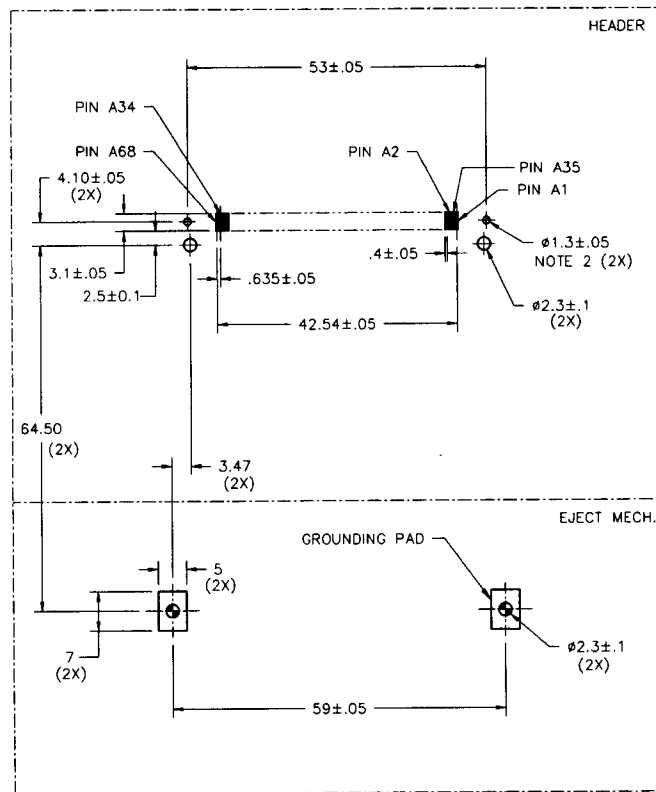
### Surface Mount In-Line

FIGURE "A"  
TOP MOUNT HEADER/MECH. PCB LAYOUT



BOARD VIEW FROM CONNECTOR MOUNTED SIDE  
TOP OF BOARD IN APPLICATION

FIGURE "B"  
BOTTOM MOUNT HEADER/MECH. PCB LAYOUT



BOARD VIEW FROM CONNECTOR MOUNTED SIDE  
BOTTOM OF BOARD IN APPLICATION

NOTES:

- 1 ALL TOLERANCES ±.15 UNLESS NOTED.
- ② THIS HOLE REQUIRED FOR HEADERS WITH BOARD LOCATOR.
- 3 KEEP-OUT ZONE FOR ASSEMBLIES SHOWN ON SHEET 6 FIGURE B.

mat'l. code				tolerances unless otherwise specified				CUSTOMER COPY		<b>BERG ELECTRONICS</b>	
ltr	ecr no	dr	date	linear	.X ±.3	projection		title		code	
A				angles	.XX ±.13	⊕ ↗		3.3V EJECT HDR ASSY		-	
				dr	.XXX ±.051	mm		product family		MCS	
				engr	0' ±2'	1:1		size		-	
				chr	G.CLEMENS 10/13/99	A4		98725		sheet 5 of 6	
				appd	D.BRANN 10/13/99						
sheet index	revision sheet										



### Board Keep Out Zone (NOT INCLUDING HEADER)

FIGURE "A"  
KEEP OUT ZONE FOR STANDOFF VERSION

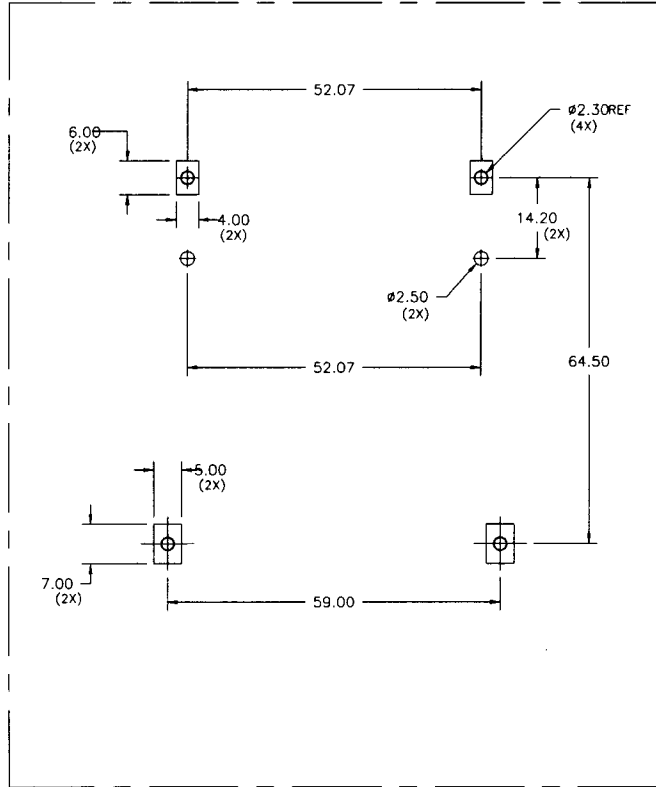
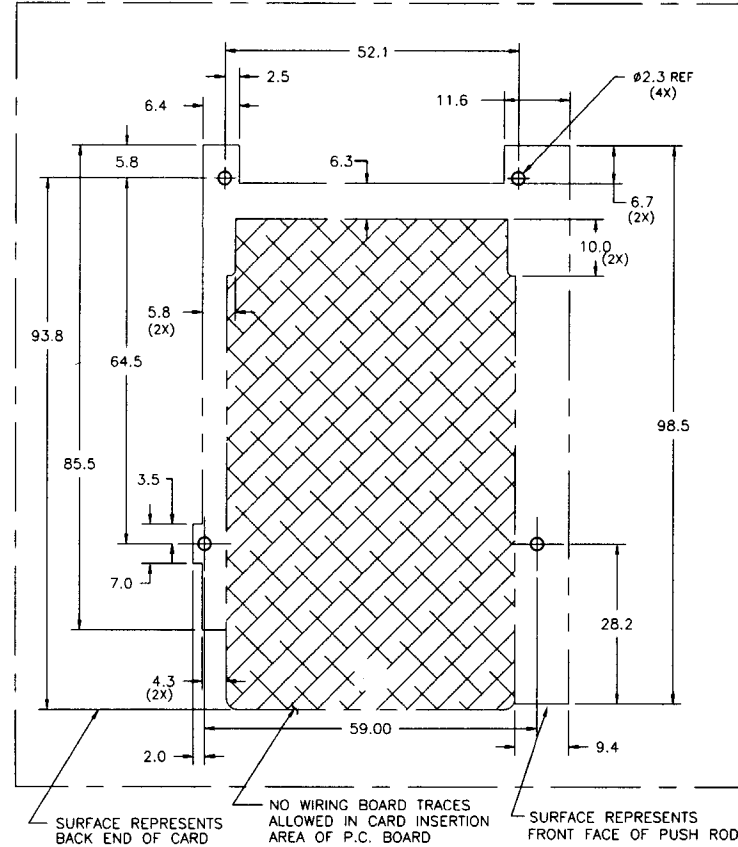


FIGURE "B" NOTE 1  
KEEP OUT ZONE FOR NO STANDOFF VERSION  
RIGHT HAND PUSHROD VERSION SHOWN  
MIRROR IMAGE FOR LEFT HAND PUSHROD



NOTES:

- ① ALL DIMENSIONS SHOWN ARE NOMINAL AND DEFINE THE OUTSIDE SURFACES OF THE ASSEMBLY. A MINIMUM OF 0.25mm (0.010") CLEARANCE BETWEEN THE ASSEMBLY AND ANY COMPONENTS IS SUGGESTED.

mat'l. code		tolerances unless otherwise specified		CUSTOMER COPY		<b>BERG ELECTRONICS</b>		
ltr	ecn no	dr	date	linear	projection	title		
A				.X ±.3		3.3V EJECT HEADER ASSY		
				.XX ±.13		product family	MCS	code
				.XXX ±.051		size	dwg no	-
				angles	mm	sheet		
				0° ±2°		6 of 6		
				dr		G.CLEMENS	10/13/99	scale
				enrg		D.BRANN	10/13/99	1:1
				chr		D.BRANN	10/13/99	A4
				appd	D.BRANN	10/13/99	98725	
sheet	revision							
index	sheet							