

A

B

C

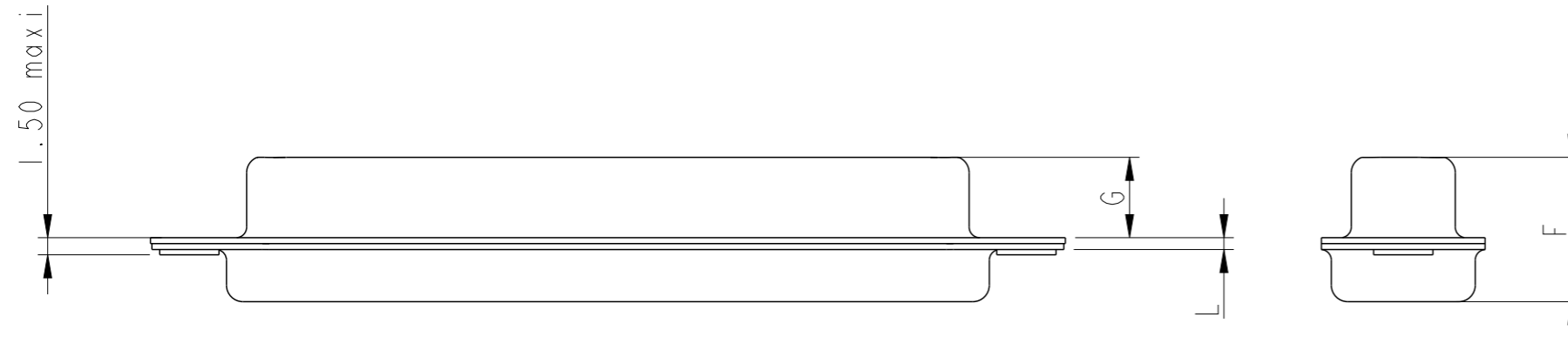
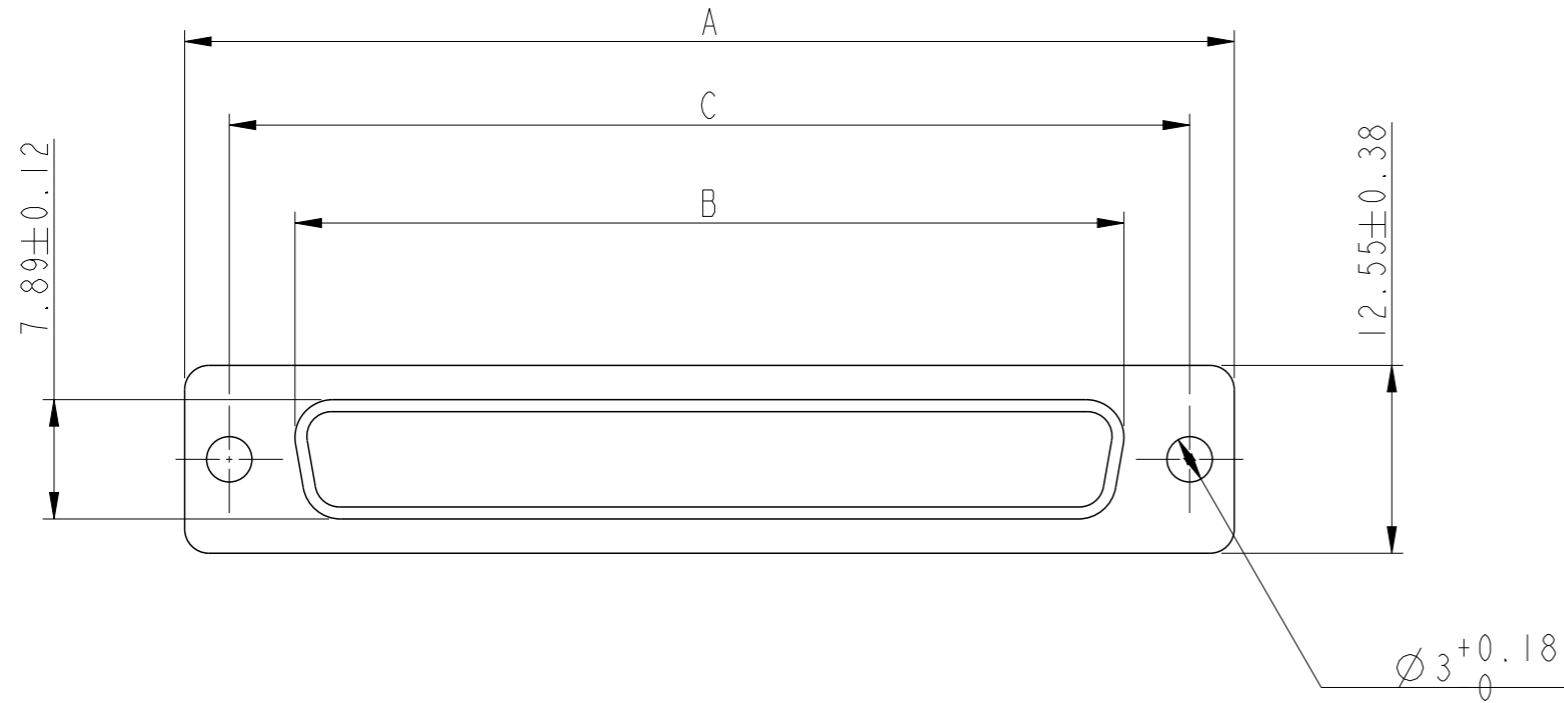
D

A

B

C

D



Shell size	$A^{+0.76}_0$	$B^{+0.25}_0$	$C \pm 0.12$	$F \pm 0.12$	$G^{+0.25}_0$	$L^{+0.22}_0$	Part Number
E	30.43	16.21	24.99	10.96	6.05	0.80	86553148
A	38.76	24.54	33.32	10.96	6.05	0.80	86553149
B	52.65	38.25	47.04	10.96	6.05	0.80	86553150
C	68.94	54.71	63.50	10.96	6.05	0.80	86553151

CADMIUM PLATED

NOTES

- Plating : Cadmium
- Packaging spec : see GS-14-920



Copyright FCI.

spec ref	-	dr	A Parrenin	2013/04/04	projection		size	A3	scale	2:1
tolerance std	ISO 406 ISO 1101	eng	A Parrenin	2013/05/16	mm		ecn no	ELX-B-14776-1		
surface	✓	linear	0.X	±0.3	product family	D-Sub	rel level	Released		
			0.XX	±0.10				SOCKET METAL CAP	C01-8655-1536	rev
ISO 1302	angular	0°	±2°	www.fci.com	cat. no.	-	Product - Customer Drw			