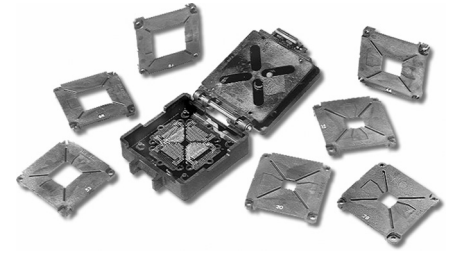




# Series 537 Insert Plates for Universal PLCC ZIF Test Socket

## FEATURES

- Conveniently Hand-insert 7 Separate Insert Plates into 'Live Bug' Universal PLCC ZIF Test Socket (P/N 84-537-21) to hold 7 Differently-sized PLCC Footprints
- Four Mounting Holes (2 Bifurcated) Mate with Mounting Post in Socket Base for Secure Assembly



## GENERAL SPECIFICATIONS

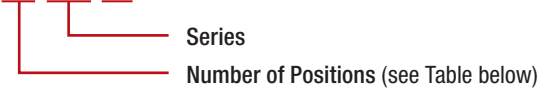
- **INSERT:** black UL 94V-0 glass-filled Polyphenylene Sulfide (PPS)
- **OPERATING TEMPERATURE:** -85°F [-65°C] to 500°F [260°C]
- **CONTACT BLOCK AND LATCH HINGE:** available individually

## MOUNTING CONSIDERATIONS

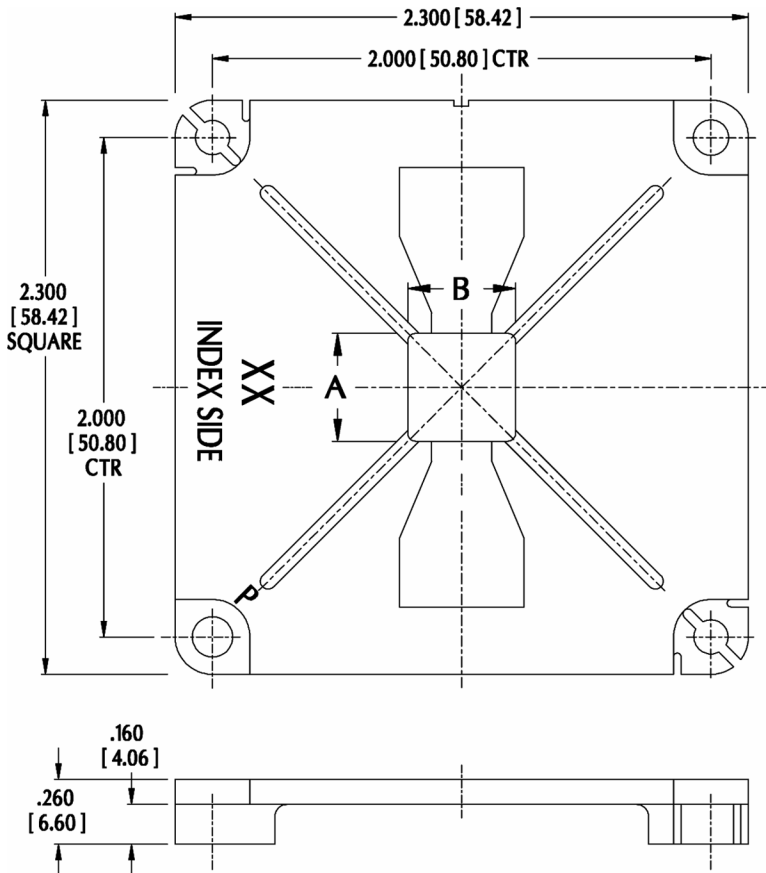
- **SUGGESTED PCB HOLE SIZE:** 0.035 ±0.002 [0.89 ±0.05] dia.

## ORDERING INFORMATION

**XX-537-20**



**USE P/N 1110832 WHEN ORDERING ALL SEVEN INSERT PLATES**



No. Positions	Dim "A"	Dim. "B"
20	0.395 to 0.397 [10.03 to 10.08]	0.395 to 0.397 [10.03 to 10.08]
28	0.495 to 0.497 [12.57 to 12.62]	0.495 to 0.497 [12.57 to 12.62]
32	0.495 to 0.497 [12.57 to 12.62]	0.595 to 0.597 [15.11 to 15.16]
44	0.695 to 0.697 [17.65 to 17.70]	0.695 to 0.697 [17.65 to 17.70]
52	0.795 to 0.797 [20.19 to 20.24]	0.795 to 0.797 [20.19 to 20.24]
68	0.995 to 0.997 [25.27 to 25.32]	0.995 to 0.997 [25.27 to 25.32]
84	1.195 to 1.197 [30.35 to 30.40]	1.195 to 1.197 [30.35 to 30.40]

ALL DIMENSIONS: INCHES [MILLIMETERS]  
 ALL TOLERANCES: ±0.005 [0.13] UNLESS OTHERWISE SPECIFIED  
 FOR TEST SOCKET, SEE [DATA SHEET 10010](#)  
 CONSULT FACTORY FOR OTHER SIZES AND CONFIGURATIONS

**CUSTOMIZATION:** ARIES SPECIALIZES IN CUSTOM DESIGN AND PRODUCTION. SPECIAL MATERIALS, PLATINGS, SIZES, AND CONFIGURATIONS CAN BE FURNISHED, DEPENDING ON QUANTITY.

ARIES RESERVES THE RIGHT TO CHANGE PRODUCT GENERAL SPECIFICATIONS WITHOUT NOTICE

PRINTOUTS OF THIS DOCUMENT MAY BE OUT-OF-DATE AND SHOULD BE CONSIDERED UNCONTROLLED



**ARIES**  
ELECTRONICS, INC.

2609 Bartram Road • Bristol, PA 19007-6810 USA  
 TEL 215-781-9956 • FAX 215-781-9845  
[WWW.ARIESELEC.COM](http://WWW.ARIESELEC.COM) • [INFO@ARIESELEC.COM](mailto:INFO@ARIESELEC.COM)



10012.indd  
 Rev. 2.1  
 1 of 1