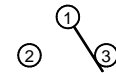
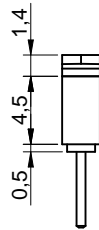
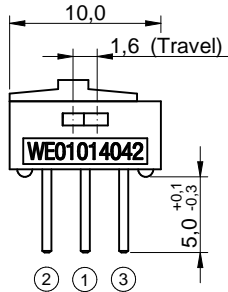
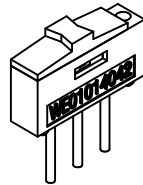
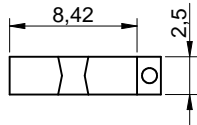


P.C.B. MOUNTING PLAN



(non-shorting)
SCHEMATIC



TECHNICAL CHARACTERISTICS

SPECIFICATION

- >Rating: 500mA, 12VDC
- >Contact Resistance: 30mOHM max.
- >Insulation Resistance: >10,000MOHM at 500VDC
- >Dielectric Strength: 500VAC for 1 minute
- >Travel: 1,6mm
- >Operating force: 800g max.
- >Life cycle: 2000 steps
- >Switch function: ON-ON

MATERIAL

- >Cover: PA66 UL 94V-0, color grey
- >Slide: PA66 UL 94V-0, color red
- >Contact: Gold Plated
- >Terminal: Gold Plated

SOLDERING INFORMATION

- >Terminal in THT version
- >Wave soldering 260°C 10 sec. max.

ENVIRONMENTAL

- >Storage condition: -40°C ~ +85°C
- >Operation condition: -40°C ~ +85°C
- >Compliance: ROHS, Reach

PACKAGING INFORMATION

- >Bulk

Scale - 2:1

This electronic component is designed and developed with the intention for use in general electronics equipments.

Before incorporating the components into any equipments in the field such as aerospace, aviation, nuclear control, submarine, transportation, (automotive control, train control, ship control), transportation signal, disaster prevention, medical, public information network etc. where higher safety and reliability are especially required or if there is possibility of direct damage or injury to human body, Würth Elektronik must be asked for a written approval.

In addition, even electronic component in general electronic equipments, when used in electrical circuits that require high safety, reliability functions or performance, the sufficient reliability evaluation-check for the safety must be performed before by the user before usage.

				GENERAL TOLERANCE .x = +/- 0,2 .xx = +/- 0,15			Basic material			
				Date 12-02-02			DESCRIPTION WS-SLTV 10mmx2,5mm Straight mini Slide Swith, THT version,opposite side connection			
				Name Jelisarow						
				Checked 12-02-02						
							Scale 2:1		Position	
b (non-shorting)		15-01-20 DaF		Würth Elektronik eiCan			SIZE			
a revised MatchCode		14-07-25 AL					Drawing.- No. 450301014042			
REV FILE		DATE BY		EDV NO 450301014042.dft			System :Solid Edge ST6			