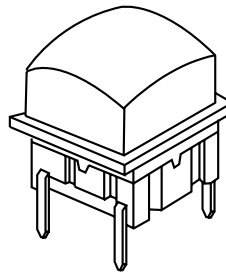


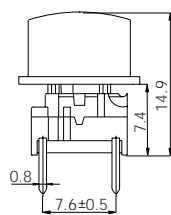
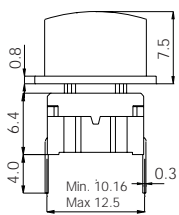
multimec® 3F+1T/1U/1V



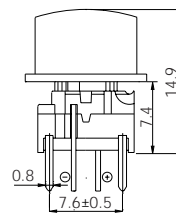
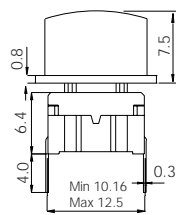
Technical Data:

- through-hole or SMD
- 50mA/24VDC
- single pole/momentary
- 10.000.000 operations life time
- IP67 sealing
- temperature range:
low temp: -40/+115°C
high temp: -40/+160°C

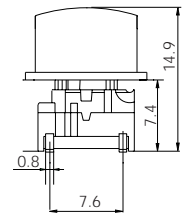
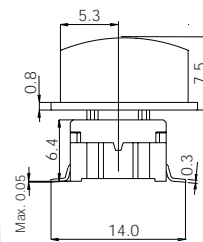
Dimensions (through-hole)



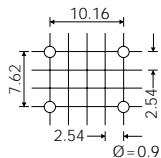
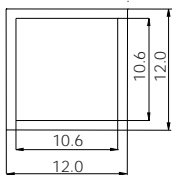
Dimensions (w/LED)



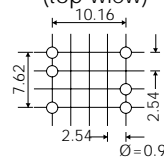
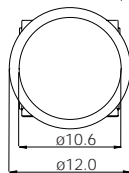
Dimensions (SMD)



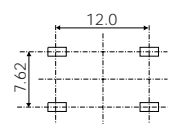
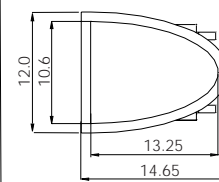
PCB layout



PCB layout (top view)



PCB layout



HOW TO ORDER

3 F	<input type="checkbox"/>	<input type="checkbox"/>		+	<input type="checkbox"/>	<input type="checkbox"/>
Switch	Mounting	L 6 low temp.			Cap	00 blue
	T through-hole	H 9 high temp.			1T	03 grey
	S surface mount				1U	08 red
					1V	09 black
						custom colours on request
Standard versions:						
3FTL6						
3FTH9						
3FSH9						
3FSH9R						

3 F	T	<input type="checkbox"/>	<input type="checkbox"/>	+	<input type="checkbox"/>	1 6
Switch	Mounting	L 6 low temp.	LED		Cap	transparent white
	T through-hole	H 9 high temp.	23 green		1T	
			45 yellow		1U	
			88 red		1V	
Standard versions:						
3FTL623						
3FTL645						
3FTL688						

Ordering example: 3FTL645 + 1V16